

Idromet Sider^{srl}



PNEUMATIC TEST PLUGS TO BLOCK DRAINAGE AND SEWER FLOW DURING MAINTENANCE OR TESTING OF GRAVITY-FLOW PIPELINES



**COUPLING FOR DRAINAGE PIPES
SEWER SADDLES**



INFLATABLE PLUGS WITH ENLARGED BY - PASS FOR GRAVITY-FLOW PIPELINES

DESCRIPTION - Inflatable plug manufactured out of high thickness and high resistance rubber for gravity-flow pipelines with enlarged by - pass for pipes .

model	pipe internal diameter		by-pass	weight kg.	length mm.	inflation pressure bar	PRICE Euro
	minimum mm.	max mm.					
15VP30 - 2	150	300	2"	5	605	1,5	1300,00
20VP40 - 4	200	400	4"	8	670	1,5	1900,00
30VP52 - 6	296	525	6"	19	740	1,5	2000,00
35VP60 - 4	350	600	4"	21	910	1,5	3400,00
35VP60 - 6	350	600	6"	21	910	1,5	3460,00
50VP100 - 4	500	1000	4"	42	1230	1,5	5240,00
50VP100 - 6	500	1000	6"	42	1230	1,5	5280,00
50VP100 - 8	500	1000	8"	42	1230	1,5	5380,00
60VP120 - 6	600	1200	6"	59	1450	1,5	6000,00
60VP120 - 8	600	1200	8"	66	1450	1,5	6400,00
75VP150 - 6	750	1500	6"	79	2300	1	9800,00
75VP150 - 8	750	1500	8"	83	2300	1	10200,00
80VP180 - 6	800	1800	6"	121	2960	1	14800,00
80VP180 - 8	800	1800	8"	125	2960	1	15200,00

Specification can be changed without warning

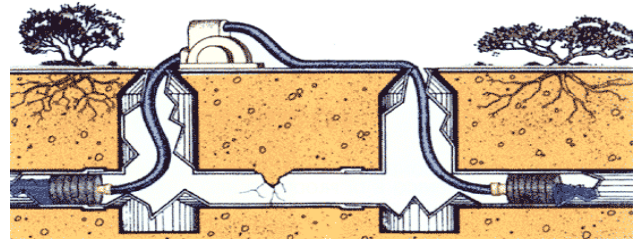
CONTROL PANEL COMPLETE WITH OVERPRESSURE AND VENT VALVE, EXTENSION PIPE 10M AND GAUGE

320,00



TECHNICAL DATA

model	MAX PRESSURE IN PIPELINE BAR										
	150	200	250	300	350	400	500	600	800	900	1000
15VP30	1,0	0,8	0,7	0,6							
20VP40		1,1	0,9	0,7	0,6	0,6					
30VP52				1,0	0,9	0,7	0,5				
35VP60					0,9	0,8	0,7	0,6			
50VP100							1,1	0,9	0,7	0,6	0,6



INFLATABLE PLUGS WITH STANDARD BY - PASS FOR GRAVITY-FLOW PIPELINES

DESCRIPTION - Inflatable plug manufactured out of high thickness and high resistance rubber for gravity-flow pipelines with standard by - pass for pipes .

model	pipe internal diameter		by-pass FF	weight kg.	length mm.	inflation pressure bar	PRICE Euro
	minimum mm.	max mm.					
10BP20	100	200	1"	3	550	2,5	740,00
15BP30	150	300	1"	5	590	2,5	940,00
20BP40	196	400	2"	7	635	2,5	1030,00
30BP52	288	525	2"	12	675	2,5	1310,00
35BP60	338	600	2"	17	865	2,5	1830,00
50BD100	488	1000	2"	32	1185	1,5	3900,00
60BB120	600	1200	4"	60	1800	1,5	5400,00
75BB150	750	1500	4"	75	2300	1	8800,00
80BB180	800	1800	4"	117	2960	1	11800,00

Specification can be changed without warning

CONTROL PANEL COMPLETE WITH OVERPRESSURE AND VENT VALVE, EXTENSION PIPE 10M AND GAUGE

320,00

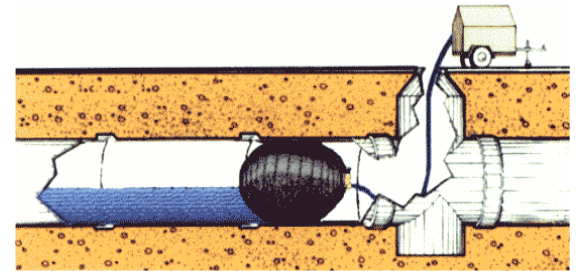
TECHNICAL DATA

model	MAX PRESSURE IN PIPELINE BAR														
	100	150	200	250	300	350	400	500	600	800	900	1000	1200	1300	1400
10BP20	2,2	1,7	1,3												
15BP30		2,2	2	1,4	1,2										
20BP40			2,2	2	1,7	1,5	1,2								
30BP52					2	1,7	1,5	1,2							
35BP60						2,1	1,9	1,6	1,3						
50BP100								1	0,8	0,6	0,5	0,5			
60BP120									1	0,7	0,6	0,6	0,5		
75BP150										1	0,9	0,9	0,7	0,6	0,5



INFLATABLE TEST PLUGS FOR GRAVITY-FLOW PIPELINES

DESCRIPTION - Inflatable plug to temporarily block gravity-flow or test pipelines in compliance with the Regulations EN 1610 , manufactured out of high thickness and high resistance rubber , for pipes .



model	pipe internal diameter		weight kg.	length mm.	inflation pressure bar	PRICE Euro
	minimum mm.	max mm.				
04SP07	40	70	0,5	195	2,5	220,00
07SP15	70	150	0,8	335	2,5	320,00
10SP20	96	200	1,4	535	2,5	330,00
15SP30	145	300	2	575	2,5	510,00
20SP40	196	400	3	635	2,5	540,00
30SP52	288	525	6	675	2,5	820,00
35SP60	338	600	9	865	2,5	880,00
50SD100	488	1000	18	1185	1,5	2100,00
60SB120	600	1200	62	1800	1,5	3200,00
75SB150	750	1500	70	2300	1	6400,00
80SB180	800	1800	105	3000	1	9800,00

Specification can be changed without warning



CONTROL PANEL COMPLETE WITH OVERPRESSURE AND VENT VALVE, EXTENSION PIPE 10M AND GAUGE

320,00

TECHNICAL DATA

model	MAX PRESSURE IN PIPELINE BAR																
	40	70	100	150	200	250	300	350	400	500	600	800	1000	1200	1300	1400	1500
04SP07	2	1,2															
07SP15		2,2	1,7	1,3													
10SP20			2,2	1,7	1,3												
15SP30				2,2	2	1,4	1,2										
20SP40					2,2	2	1,7	1,5	1,2								
30SP52							2	1,7	1,5	1,2							
35SP60								2,1	1,9	1,6	1,3						
50SD100									1	0,8	0,6	0,5					
60SB120										1	0,7	0,6	0,5				
75SB150											1	0,9	0,7	0,6	0,5	0,4	

INFLATABLE TEST PLUGS FOR SMALLER DIAMETER PIPELINES model ZM

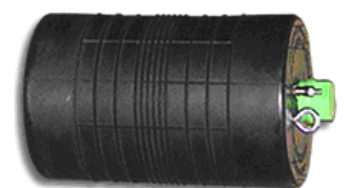
DESCRIPTION - Inflatable plug to temporarily block gravity-flow or test pipelines for smaller diameter . All plugs are made of natural and synthetic rubber compound and are equipped with a tyre inflation valve ; for pipes having internal diameter from mm up to mm .

model	pipe internal diameter		max pressure in pipeline bar	weight kg.	length mm.	inflation pressure bar	PRICE euro
	minium mm.	max mm.					
20ZM33	20	33	2	0,1	98	2,5	46,00
33ZM40	33	40	2	0,1	100	2,5	50,00
46ZM77	46	77	1,5	0,1	110	2,5	70,00
71ZM102	71	102	1,5	0,3	130	2,5	76,00
86ZM153	86	153	1,5	0,5	195	2,5	174,00



stop flow ZM

model	pipe internal diameter		by-pass	max pressure in pipeline bar	weight kg.	length mm.	inflation pressure bar	PRICE euro
	minimum mm.	max mm.						
71SM102	71	102	1/2"	1,5	0,4	130	2,5	270,00
86SM153	86	153	1/2"	1,5	0,7	195	2,5	296,00



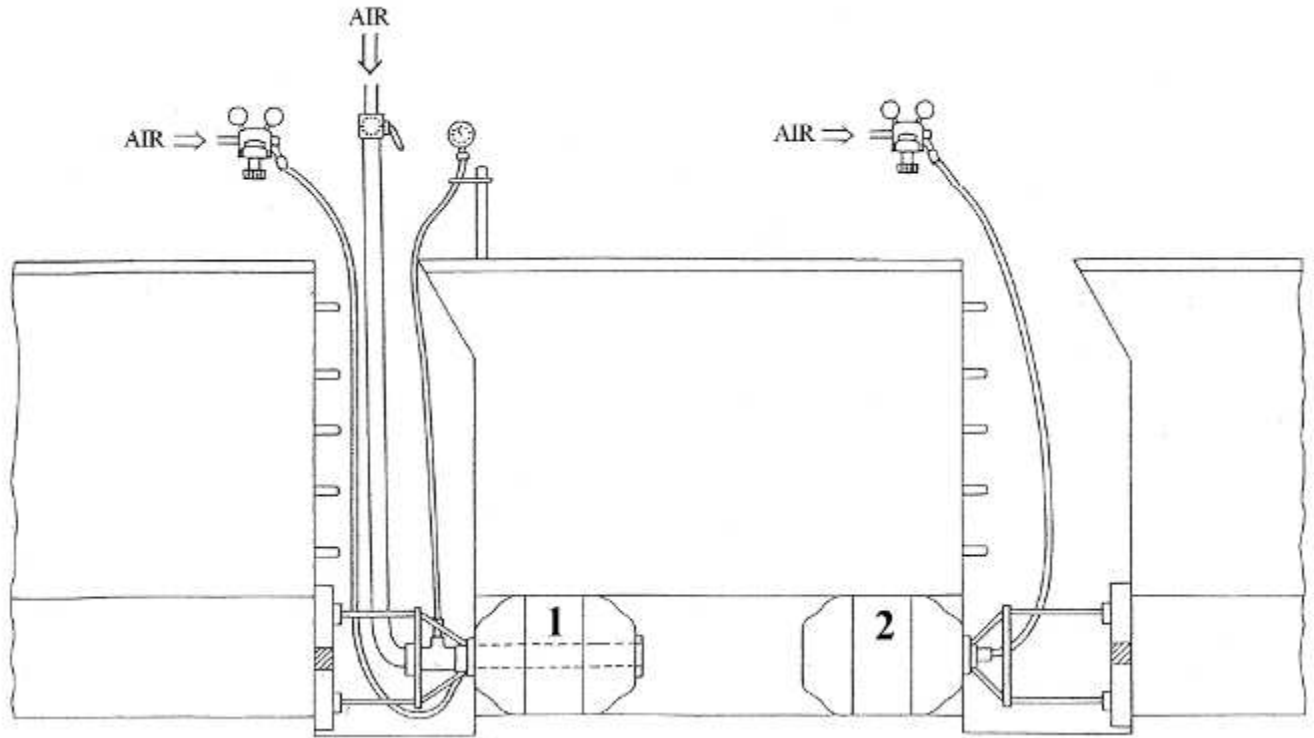
by-pass flow SM

Specification can be changed without warning

inflation hose 5 m 66,00=€

hand pump 118,00=€

AIR PIPELINE TEST KIT



This test is regulated by UNI EN 1610 standards, method 'L', and is the simplest, most cost-effective test. If the pipes do not pass the test, the water test must be carried out as described in more detail in the standard.

DESCRIPTION : supply of gravity pipeline air test kit in compliance with UNI EN 1610.

The kit comprises:

1 blind stopper and one stopper with bypass made of reinforced rubber, 2 inflation pipes complete with control panel , 1 adapter for stopper with bypass, 1 measurement tube with gauge, 1 tube for pressurizing the pipeline with related fittings.

model	pipe internal diameter mm.		weight kit kg.	inflation pressure bar	PRICE Euro
	minimum	max			
10LK20	96	200	6	2,5	2300,00
15LK30	145	300	10	2,5	2700,00
20LK40	196	400	12	2,5	3000,00
30LK52	288	525	20	2,5	3500,00
35LK60	338	600	28	2,5	4100,00
50LK100	488	1000	52	1,5	7100,00
60LK120	600	1200	110	1,5	11200,00
75LK150	750	1500	172	1	18200,00
80LK180	800	1800	234	1	24600,00

Specification can be changed without warning

HOW TO PROCEED

Only qualified personnel are allowed to work with stop plugs.

Before starting the work, check the inner diameter of the pipe and choose a stopper of suitable size.

Never use a stopper with a larger diameter than that defined. Use of these stoppers is permitted only with circular sections.

Clean the pipe carefully to remove any sharp or irregularly-shaped parts before inserting the stopper.

Make a visual inspection of the stopper to check for any irregularities.

Fit the accessories required for the test.

When assembling the stoppers in the pipes, cut off the flow of liquids.

Insert either the stopper with bypass (1) and the blind stopper (2) in the ends of the pipe.

Check correct introduction of the stopper in the pipe and alignment.

Start the inflation procedure up to the pressure permitted by the stoppers.

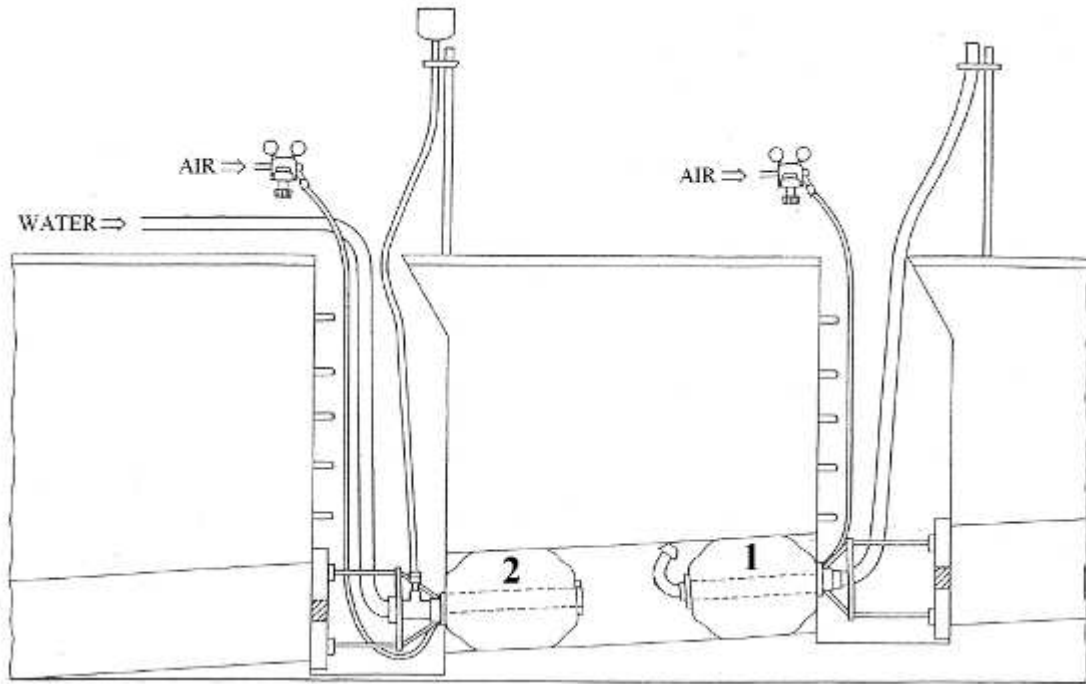
Do not stand close to the stopper.

Once the stoppers have been correctly positioned, inflated and securely fastened, the test can be carried out as required by UNI EN 1610.

Fill the stopper with air via the bypass and follow the instructions of the standard.

On completion of the test, remember to vent first of all the air and then to deflate the stoppers. Remember to wash and dry the stoppers and the equipment used and store these in a dry environment at a distance from sources of heat and in the dark.

WATER PIPELINE TEST KIT



This test is regulated by UNI EN 1610 standards, method 'W' and can be used to detect the leakage point of a pipeline that has not passed the air test or, more simply, as a run-off test. It differs from the air test method as it takes much longer and also for the complex problems of procuring and disposing of the water necessary for testing, in particular in the case of large diameters.

DESCRIPTION : supply of water pipeline test kit for gravity pipes in accordance with the UNI EN 1610 standard. The kit comprises: 2 stoppers with by-pass made of reinforced rubber, 2 inflation pipes complete with control panel, 1 adapter for stopper with bypass, 1 transparent measurement pipe, 1 float.

model	pipe internal diameter mm.		weight kit kg.	inflation pressure bar	PRICE Euro
	minimum	max			
10WK20	96	200	8	2,5	2500,00
15WK30	145	300	12	2,5	2900,00
20WK40	196	400	15	2,5	3200,00
30WK52	288	525	27	2,5	3800,00
35WK60	338	600	36	2,5	4900,00
50WK100	488	1000	66	1,5	9000,00
60WK120	600	1200	125	1,5	14400,00
75WK150	750	1500	180	1	22200,00
80WK180	800	1800	278	1	26600,00

Specification can be changed without warning

HOW TO PROCEED

Only qualified personnel are allowed to work with stop plugs.

Before starting the work, check the inner diameter of the pipe and choose a stopper of suitable size.

Never use a stopper with a larger diameter than that defined. Use of these stoppers is permitted only with circular sections.

Clean the pipe carefully to remove any sharp or irregularly-shaped parts before inserting the stopper.

Make a visual inspection of the stopper to check for any irregularities.

Fit the accessories required for the test.

When assembling the stoppers in the pipes, cut off the flow of liquids.

Insert the vent-stopper (1) in the upstream sump pit and the delivery-stopper (2) in the downstream sump pit.

Check correct introduction of the stopper in the pipe and alignment.

Start the inflation procedure up to the pressure permitted by the stoppers.

Do not stand close to the stopper.

Once the stoppers have been correctly positioned, inflated and securely fastened, the test can be carried out as required by UNI EN 1610.

Fill with water from the downstream delivery-stopper (2) until the levels are reached.

On completion of the test, remember to first of all drain the water and then to deflate the stoppers. Remember to wash and dry the stoppers and the equipment used and store these in a dry environment at a distance from sources of heat and in the dark.

PLUGS FOR LARGE CROSS - SECTIONS SERIES PILLOW

DESCRIPTION - Inflatable plug to temporarily block gravity-flow or test pipelines for large sections in compliance with the Regulations EN 1610 , manufactured out of high thickness and high resistance rubber , for pipes having internal diameter from mm up to mm .



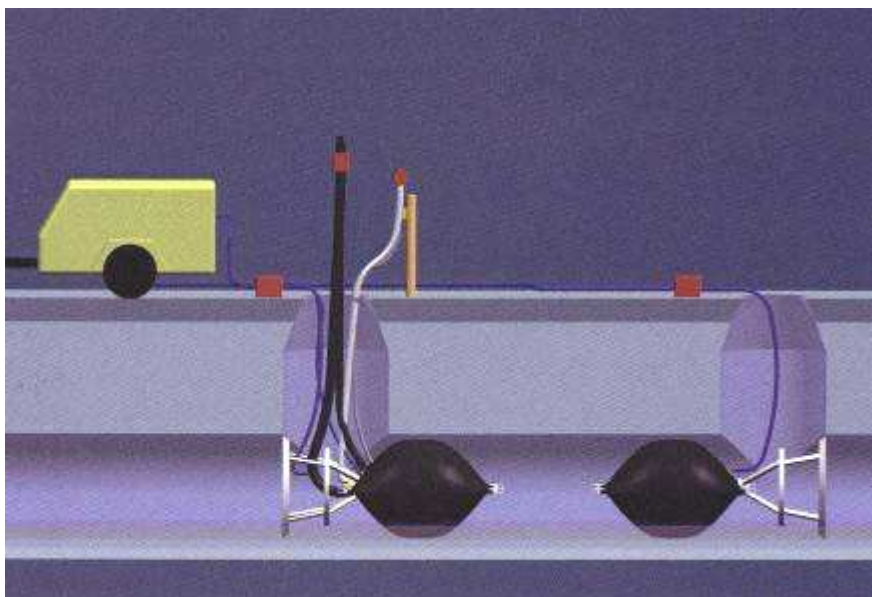
model	pipe internal diameter		max pressure in pipeline bar	weight kg.	length mm.	inflation pressure bar	STOP FLOW PLUGS	PLUGS WITH BY-PASS 2"
	minimum mm.	max mm.					PRICE euro	PRICE euro
60PW100	595	1000	0,7	18 - 23	2100	1	2200,00	2600,00
80PW120	795	1200	0,6	29 - 34	2500	0,9	3600,00	4100,00
120PW160	1195	1600	0,5	51 - 57	3200	0,8	11000,00	12000,00
160PW200	1595	2000	0,4	86 - 92	4000	0,6	13000,00	14000,00
190PW220	1900	2200	0,3	100 - 110	4800	0,5	14000,00	15000,00
300PW300	3000	3000	0,3	N.D.		0,6	25800,00	P.A.R.

Specification can be changed without warning

CONTROL PANEL COMPLETE WITH OVERPRESSURE AND VENT VALVE, EXTENSION PIPE 10M AND GAUGE

680,00

AIR TEST KIT FOR LARGE CROSS-SECTIONS



DESCRIPTION : supply of a pillow series kit for large cross-section gravity pipeline air test in compliance with UNI EN 1610 standard. The kit comprises: 1 blind stopper and a stopper with bypass made of reinforced rubber, 2 inflation pipes c/w control panel, 1 adapter for stopper with bypass, 1 measurement tube with gauge

model	pipe internal diameter		weight kit kg.	inflation pressure bar	PRICE Euro
	minimum mm.	max mm.			
60LKW100	595	1000	50	1	7200,00
80LKW120	795	1200	70	0,9	9900,00
120LKW160	1195	1600	120	0,8	25200,00
160LKW200	1595	2000	190	0,6	28600,00

Specification can be changed without warning

MECHANICAL PLUGS FOR NON PRESSURE PIPE



DESCRIPTION : mechanical plug coupling and quick release, suitable for placement in confined spaces for temporary obstruction of fluids without pressure or such caps to protect the pipelines in the works; body nylon reinforced with fiberglass (CAM model) or aluminum and steel coated with epoxy (model ALU) with EPDM rubber gasket thick, quick release system using a rope or other means to operate at a safe distance



model	Internal pipe diameter		by-pass Ø	max pressure bar	PRICE euro
	min mm	max mm			
CAM100	93	103	1/2"	0,5	40,00
CAM105	102	107	1/2"	0,5	44,00
CAM115	116	123	1/2"	0,5	48,00
CAM125	125	132	1/2"	0,5	49,00
CAM140	144	149	1/2"	0,3	50,00
CAM150	147	153	1/2"	0,3	52,00
ALU200	175	205	1"	0,5	180,00
ALU225	205	235	1"	0,5	180,00
ALU250	220	250	1"	0,5	190,00
ALU270	240	270	1"	0,5	200,00
ALU300	280	310	1"	0,5	220,00
ALU315	293	323	1"	0,5	230,00
ALU375	352	382	1"	0,3	300,00
ALU400	375	400	1"	0,3	310,00
ALU420	400	425	1"	0,3	320,00
ALU470	449	474	1"	0,3	330,00
ALU520	496	521	1"	0,3	580,00

Specification can be changed without warning



model CAM



model ALU

CAM SEQUENCE OF ASSEMBLY AND DISASSEMBLY



ALU SEQUENCE OF ASSEMBLY AND DISASSEMBLY



COUPLINGS FOR GRAVITY - FLOW DRAINAGE AND SEWAGE PIPES

an easy choice

How to choose a coupling

- 1) find the pipe external diameter
- 2) determine if your ground is stable or subject to landslips
- 3) when you know the particular type of coupling you need (**MDC - MSC - MAC - MSC plus**) and the range , you can choose the right model on the technical data; if you have any problem , please contact our technical office



MDC	MSC	MAC	MSC plus
A flexible coupling between two pipes having similar diameters From 65 to 805mm pipes Pressure up to 0,6 bar	A solid coupling between two pipes having similar diameters From 65 to 2000mm pipes Pressure up to 2,5 bar for pipes under 620mm	A flexible coupling to connected pipes with different diameters From 100 to 460mm pipes Pressure up to 0,6 bar	A solid coupling to connected pipes with different diameters For all size up to 2000mm Pressure up to 0,6 bar pipes under 620mm

TECHNICAL DATA FOR ITALIAN MARKET

DN mm	CONCRETE PIPE standard	HDPE P.V.C.	FIBERGLASS		CAST IRON PIPE	ASBESTOS CEMENT PIPE		CLAY PIPE	FIBRO CEMENT		STEEL PIPE
			F.W.	HOBAS		cl. 9000	cl. 12000		cl. 9000	cl. 12000	
100		110	110		118	120	120	131 - 138			114
150	200	160	160	168	170	170	170	186 - 194	182	182	168
200	260	200	210	220	222	222	222	242 - 248	234	234	219
250		250	260	272	274	274	274	300 - 308	292	292	273
300	380 - 440	315	310	324	326	328	332	355 - 364	348	348	323
350		355	360	376	378	382	386	417 - 418	402	402	355
400	490 - 550	400	412	427	429	436	442	468 - 486	452	452	406
500	610 - 660	500	512	530	532	542	550	574 - 581	556	568	508
600	720 - 790	630	612	616	635	650	658	676 - 691	664	680	609
700	865 - 895	710	712	718	738	760	768	784 - 795	778	794	711
800	930 - 1000	800	812	820	842	868	878	884 - 895	888	906	812
900		900	912	924	945	976	988	1008	998	1018	914
1000	1160-1240	1000	1012	1026	1048	1084	1098	1119	1108	1130	1016



MULTI DIAMETER COUPLING MDC from 65 mm up to 805 mm

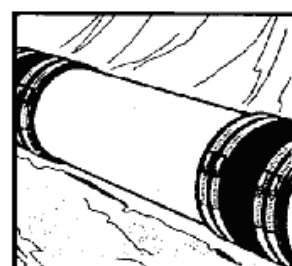
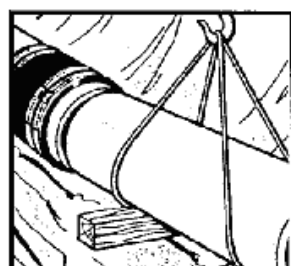
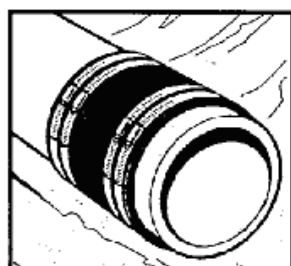
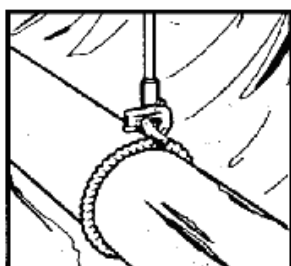
Applications and advantages of MDC couplings

- *quick and secure connection between pipes of different materials and similar outside diameters*
- *technically suitable to be used in crossings of particularly unstable ground areas*
- *flexibility in the connection which allows to absorb traffic vibrations and ground shifts . Especially recommended in seismic areas*
- *perfect hydraulic sealing in compliance with the Regulations EN 1610*
- *cheap*

DESCRIPTION : Multi-diameter coupling **MDC** for drainage pipes made of any material . These couplings incorporate a moulded elastomeric EPDM sleeve , secured to the pipe ends by two AISI 304 SS clamps . Minimum range mm and maximum range mm suitable for pressures of up to 0,6 bars and for both underground and open-air applications . Complies with the European Regulations EN 681-1 , EN 295-4 and also EN 1610 .

model MDC	SIZE RANGE		max pressure bar	recommended torque Nm	L width mm.	PRICE EURO
	minimum mm.	max mm.				
65	55	65	0,6	6	90	20,00
75	65	75	0,6	6	90	21,00
90	75	90	0,6	6	100	22,00
100	85	100	0,6	6	100	23,00
120	105	120	0,6	6	120	25,00
137	120	137	0,6	6	120	25,00
150	125	150	0,6	6	120	33,00
162	137	162	0,6	6	120	38,00
175	150	175	0,6	6	120	38,00
200	175	200	0,6	6	150	46,00
212	187	212	0,6	6	150	46,00
225	200	225	0,6	6	150	46,00
250	225	250	0,6	6	150	66,00
275	250	275	0,6	6	150	66,00
320	290	320	0,6	13	190	100,00
335	310	335	0,6	13	190	100,00
360	335	360	0,6	13	190	110,00
410	385	410	0,6	13	190	120,00
430	400	430	0,6	13	190	120,00
445	415	445	0,6	13	190	130,00
465	435	465	0,6	13	190	140,00
510	480	510	0,6	13	190	166,00
525	495	525	0,6	13	190	166,00
545	515	545	0,6	13	190	180,00
620	590	620	0,6	13	190	210,00
635	620	635	0,6	20	190	210,00
710	695	710	0,6	20	190	280,00
805	775	805	0,6	20	190	300,00

Specification can be changed without warning



MULTI DIAMETER COUPLING MSC from 65 mm up to 2000 mm

Applications and advantages of MSC couplings

- *quick and secure connection between pipes of different materials and similar outside diameters*
- *technically suitable to be used in crossings of particularly unstable ground areas*
- *flexibility in the connection which allows to absorb traffic vibrations and ground shifts . Especially recommended in seismic areas*
- *perfect hydraulic sealing in compliance with the Regulations EN 1610*
- *cheap*

DESCRIPTION : Multi-diameter standard coupling **MSC** for drainage pipes made of any material. These couplings incorporate a moulded elastomeric EPDM sleeve , an AISI 304 SS shear band secured to the pipe ends by two AISI 304 SS clamps . Minimum range mm and maximum range mm suitable for pressures of up to 2,5 bar for pipes under 620mm ; for both underground and open-air applications . Complies with the European Regulations EN 681-1 , EN 295-4 and also EN 1610 .



model MSC	SIZE RANGE		max pressure bar	recommended torque Nm	L width mm.	PRICE EURO
	minimum mm.	max mm.				
65	55	65	1,5	10	90	30,00
75	65	75	1,5	10	90	38,00
90	75	90	1,5	10	100	40,00
100	85	100	1,5	10	100	42,00
120	105	120	2,5	10	120	62,00
137	120	137	2,5	10	120	62,00
150	125	150	2,5	10	120	68,00
162	137	162	2,5	10	120	68,00
175	150	175	2,5	10	120	68,00
200	175	200	2,5	10	150	90,00
212	187	212	2,5	10	150	90,00
225	200	225	2,5	10	150	90,00
250	225	250	2,5	10	150	104,00
275	250	275	2,5	10	150	104,00
320	290	320	2,5	13	190	148,00
335	310	335	2,5	13	190	148,00
360	335	360	2,5	13	190	160,00
410	385	410	2,5	13	190	172,00
430	400	430	2,5	13	190	172,00
445	415	445	2,5	13	190	180,00
465	435	465	2,5	13	190	190,00
510	480	510	2,5	13	190	220,00
525	495	525	2,5	13	190	220,00
545	515	545	2,5	13	190	240,00
620	590	620	2,5	13	190	390,00
635	620	635	1,0	20	190	390,00
710	695	710	1,0	20	190	420,00
805	775	805	1,0	20	190	450,00

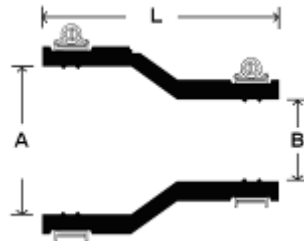


320	290	320	1,5	13	300	240,00
410	385	410	1,5	13	300	290,00
510	480	510	1,5	13	300	380,00
525	495	525	1,5	13	300	380,00
635	620	635	1,0	20	300	670,00
710	695	710	1,0	20	300	720,00
805	775	805	1,0	20	300	770,00
915	885	915	1,0	20	300	820,00
1010	995	1010	0,6	20	300	860,00
1100	1085	1100	0,6	20	300	910,00
1205	1190	1205	0,6	20	300	1120,00

Specification can be changed without warning



ADAPTOR COUPLING MAC from 100 mm up to 460 mm



Applications and advantages of MAC couplings

- quick and secure connection between pipes of different materials and different outside diameters
- flexibility in the connection which allows to absorb traffic vibrations and ground shifts . Especially recommended in seismic areas
- perfect hydraulic sealing in compliance with the Regulations EN 1610
- unbeatable in connecting the pipe ends of street , railway and river crossings double pipes
- cheap

DESCRIPTION : Multi-diameter adaptor coupling **MAC** for drainage pipes made of any material and having different external diameters . These couplings incorporate a moulded elastomeric EPDM sleeve secured to the pipe ends by two AISI 304 SS clamps .

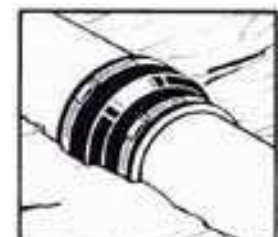
side **A** minimum range maximum range mm

side **B** minimum range maximum range mm

suitable for pressures of up to 0,6 bars and for both underground and open-air applications . Complies with the European Regulations EN 681-1 , EN 295-4 and also EN 1610 .

model MAC	SIZE RANGE A		SIZE RANGE B		L width mm.	PRICE Euro
	minimum mm.	max mm.	minimum mm.	max mm.		
1501	135	150	100	115	100	40,00
1602	144	160	110	125	120	40,00
1603	144	160	121	136	120	50,00
1702	155	170	110	125	120	50,00
1703	155	170	130	145	120	50,00
1802	160	180	110	125	150	50,00
1805	160	180	155	170	150	50,00
1922	170	192	110	125	120	60,00
1923	170	192	121	136	120	60,00
1924	170	192	144	160	120	60,00
2001	180	200	155	170	150	60,00
2002	180	200	160	180	150	60,00
2102	185	210	110	125	150	60,00
2104	185	210	130	145	150	60,00
2105	185	210	144	160	150	60,00
2106	185	210	155	170	150	60,00
2203	195	220	155	170	150	70,00
2352	210	235	110	125	150	80,00
2354	210	235	144	160	150	80,00
2505	225	250	155	170	150	100,00
2507	225	250	195	220	150	100,00
2654	240	265	144	160	150	100,00
2753	250	275	155	170	165	110,00
2755	250	275	195	220	165	110,00
2904	265	290	144	160	150	120,00
2908	265	290	240	265	150	120,00
3003	275	300	180	200	150	120,00
3157	290	315	245	270	165	120,00
3204	295	320	144	160	150	120,00
3206	295	320	190	215	150	140,00
3208	295	320	240	265	150	140,00
3307	305	330	245	270	150	140,00
3351	310	335	180	205	150	140,00
3357	310	335	295	320	150	140,00
3600	335	360	295	320	165	150,00
3606	335	360	190	215	165	150,00
3608	335	360	240	265	165	150,00
3708	345	370	300	325	165	160,00
3709	345	370	310	335	165	160,00
3858	360	385	240	265	165	160,00
3859	360	385	265	290	165	170,00
4208	395	420	240	265	165	190,00
4209	395	420	265	290	165	190,00
4608	435	460	360	385	180	200,00

Assembly sequence



Specification can be changed without warning

FLEXIBLE SEWER SADDLES T – flex



WRONG



CORRECT APPLICATION WITH T-flex

Advantages of T flex sewer saddles

- they are designed to allow a solid and rapid connection limiting installation work to the minimum
- flexibility in the connection which allows absorption of traffic vibrations and ground shifts . Especially recommended in seismic areas
- perfect hydraulic sealing in compliance with Regulations EN 1610
- inexpensive installation procedures



DESCRIPTION : T flex 90° multi-diameter sewer saddle for gravity-flow pipes incorporating a moulded elastomeric sleeve secured to pipe ends by two AISI 304 Stainless Steel clamps , for DN sewer main mm and lateral service connection of DN mm . For pressures of up to 0.5 bar. Complies with European Regulations EN 681-1 , EN 295-4 and EN 1610.

Price List T- flex

model T-flex	MAIN PIPE DIAMETER		LATERAL PIPE		PRICE EURO
	minimum mm	max mm	minimum mm	max mm	
T 110	160	380	105	120	82,00
T 110 XL	380	760	105	120	122,00
T 125	160	380	115	130	110,00
T 125 XL	380	760	115	130	164,00
T 160	225	500	150	170	120,00
T 160 XL	500	1000	150	170	168,00
T 200	300	500	175	200	210,00
T 200 XL	500	1000	175	200	294,00

Specification can be changed without warning



T-flex test on fiberglass pipe



T-flex application on clay pipe

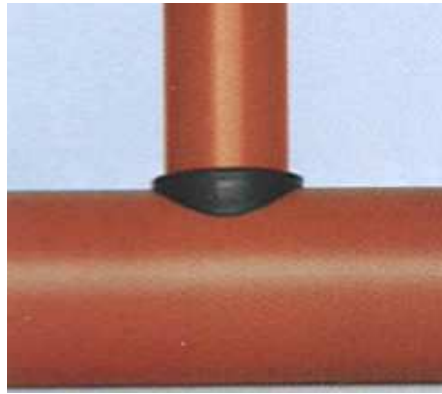


T-flex application on cast or steel pipe

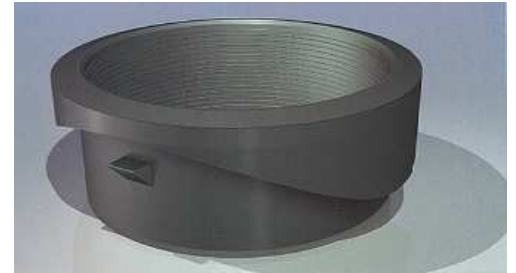


T-flex application on PVC or HDPE pipe

SEWER SADDLES AT - fix



DESCRIPTION : supply **AT - fix** 90° mono-diameter coupling for gravity-flow for connecting lateral pipes of PVC or HDPE NDmm on main pipe mm



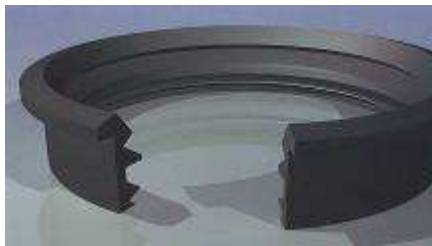
Price List AT - fix 2010

model	LATERAL PIPE mm	MAIN PIPE mm	PRICE EURO
AT - fix 110	110	250 - 315	32,00
AT - fix 160	160	315 - 400	50,00
AT1 - fix 200	200	315	68,00
AT2 - fix 200	200	400	68,00
AT3 - fix 200	200	630 - 800	80,00
AT1 - fix 250	250	400 - 500	104,00
AT2 - fix 250	250	630 - 800	110,00
AT - fix 315	315	630 - 800	124,00

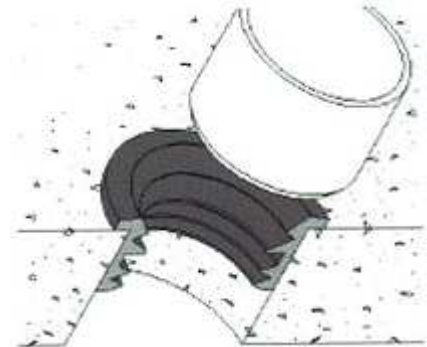
Specification can be changed without warning



SEWER SADDLES T2



DESCRIPTION : supply **T2** 90° simple plug for PVC and HDPE gravity flow pipes on flat surface or similar, manufacture EPDM elastomer , for connecting lateral pipe of PVC or HDPE ND mm



model	LATERAL PIPE mm	A mm	B mm	C mm	hole Ø	PRICE EURO
T2 110	110	60	20	140	136	22,00
T2 125	125	60	20	155	151	24,00
T2 160	160	60	20	190	186	28,00
T2 200	200	60	20	230	226	32,00
T2 250	250	60	20	282	276	40,00
T2 315	315	60	20	350	341	50,00
T2 400	400	60	20	nd	426	60,00
T2 500	500	60	20	nd	526	78,00
T2 630	630	60	20	nd	656	94,00

Specification can be changed without warning

