

PN 10 - Art. A020

PN 16 - Art. A021

SARACINESCA CUNEO GOMMATO PN10/16 CORPO PIATTO

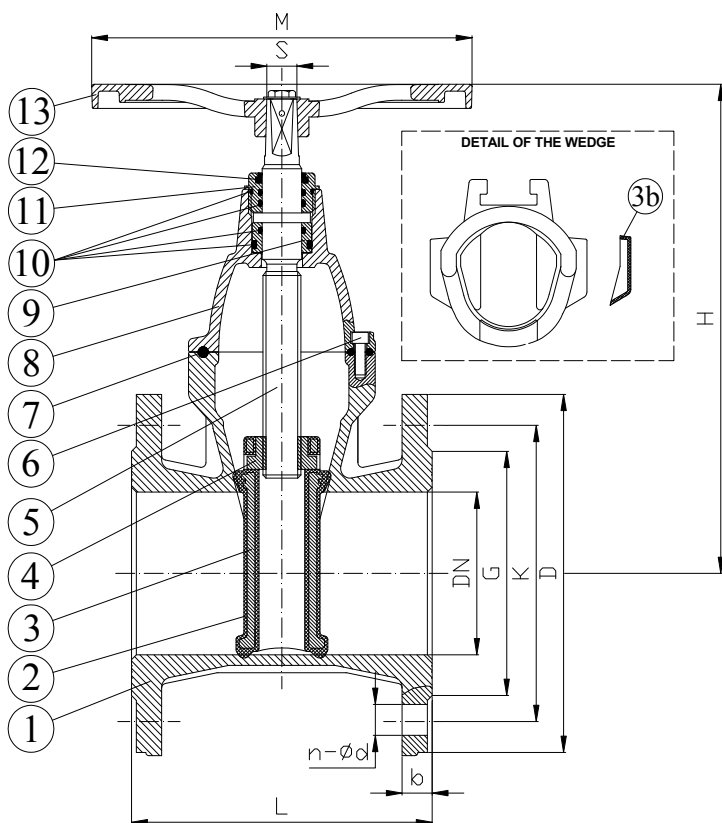
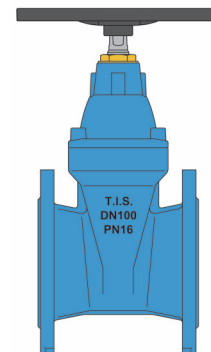
SOFT SEATED GATE VALVE PN10/16 SHORT BODY

APPLICAZIONE:

Fornitura e distribuzione acqua potabile, trattamento acque reflue e sistemi fognari, settori industriali.

APPLICATION:

Drinkable water supply and distribution, waste water treatment and sewerage.



NORMA PROGETTO:

EN 1171
EN 1074-1 ed EN 1074-2

SCARTAMENTO:

EN 558 Serie14

FLANGE:

EN 1092-2

COLLAUDI:

EN 12266-1

TEMP. ESERCIZIO:

Max. +70°C

DESIGN STANDARD:

EN 1171
EN 1074-1 and EN 1074-2

FACE TO FACE:

EN 558 Series14

FLANGES:

EN 1092-2

TESTS:

EN 12266-1

WORKING TEMP.:

Max. +70°C

DN	G	K		D		L	H	n-ød		b	M	S	W (kg)
		PN10	PN16	PN10	PN16			PN10	PN16				
40	84	110	110	150	150	140	205	4-19	4-19	19	200	14	8.5
50	99	125	125	165	165	150	205	4-19	4-19	19	200	14	9.5
65	118	145	145	185	185	170	225	4-19	4-19	19	200	17	12
80	132	160	160	200	200	180	250	8*-19	8-19	19	200	17	14
100	156	180	180	220	220	190	292	8-19	8-19	19	250	19	18.5
125	184	210	210	250	250	200	329	8-19	8-19	19	250	19	21
150	211	240	240	285	285	210	379	8-23	8-23	19	350	19	35
200	266	295	295	340	340	230	482	8-23	12-23	20	350	24	58
250	319	350	355	395	405	250	560	12-23	12-28	22	500	27	73
300	370	400	410	445	460	270	636	12-23	12-28	24.5	500	27	103

	DENOMINAZIONE PART	MATERIALI MATERIALS
1	CORPO BODY	EN-GJS 500-7 EN-GJS 500-7
2	RIVESTIMENTO CUNEO WEDGE	GOMMA EPDM (o NBR) EPDM COATED (or NBR)
3	STRUTTURA CUNEO CORE	EN-GJS 500-7 EN-GJS 500-7
3b	GUIDA GUIDE	NYLON NYLON
4	MADREVITE STEM NUT	BRONZO ALLUMINIO ALUMINIUM BRONZE
5	ASSE STEM	ACC.INOX AISI 420 (EN 1.4021) SS AISI 420 (EN 1.4021)
6	VITE SCREW	ACCIAIO ZINCATO 8.8 GALVANIZED STEEL 8.8
7	GUARNIZIONE GASKET	EPDM EPDM
8	CAPPELLO BONNET	EN-GJS 500-7 EN-GJS 500-7
9	BOCCOLA BUSHING	POM POM
10	O-RING O-RING	NBR NBR
11	BOCCOLA DI TENUTA PACKING GLAND	OTTONE BRASS
12	PARAPOLVERE DUSTPROOF	NBR NBR
13	VOLANTINO HANDWHEEL	ACCIAIO S235JR STEEL S235JR

RIVESTIMENTO ESTERNO/INTERNO: Polvere epossidica di colore blu RAL 5015 con spessore 250µm.

SURFACE PROTECTION: FBE coating process with epoxy resin powder of blue colour RAL 5015 and thickness of 250µm.

PN 10 - Art. A022

PN 16 - Art. A023

SARACINESCA CUNEO GOMMATO PN10/16 CORPO OVALE

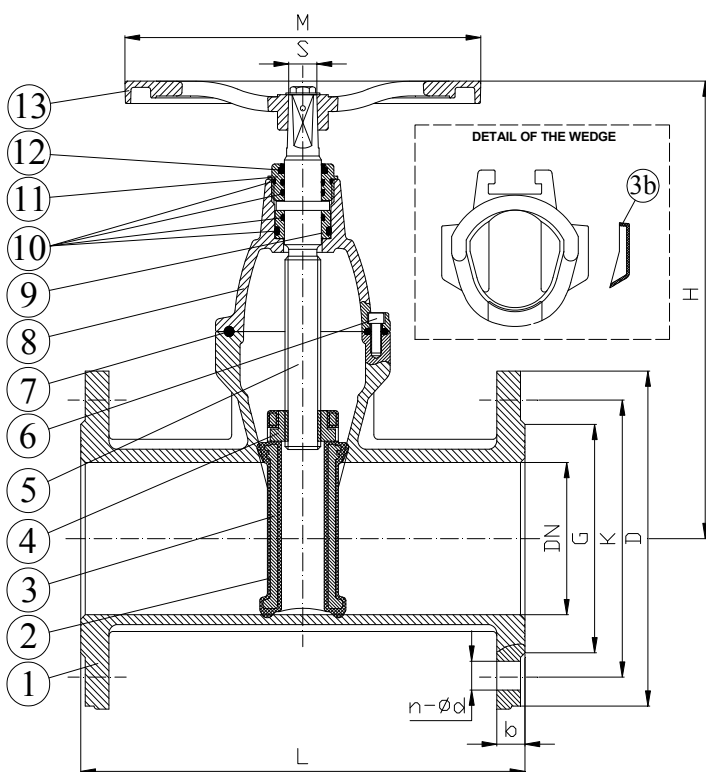
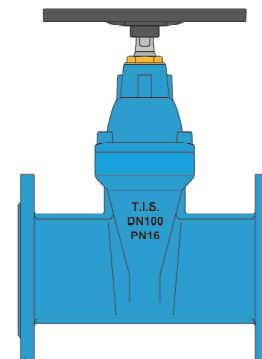
SOFT SEATED GATE VALVE PN10/16 LONG BODY

APPLICAZIONE:

Fornitura e distribuzione acqua potabile, trattamento acque reflue e sistemi fognari, settori industriali.

APPLICATION:

Drinkable water supply and distribution, waste water treatment and sewerage.



NORMA PROGETTO:

EN 1171
EN 1074-1 ed EN 1074-2

SCARTAMENTO:

EN 558 Serie15

FLANGE:

EN 1092-2

COLLAUDI:

EN 12266-1

TEMP. ESERCIZIO:

Max. +70°C

DESIGN STANDARD:

EN 1171
EN 1074-1 and EN 1074-2

FACE TO FACE:

EN 558 Series15

FLANGES:

EN 1092-2

TESTS:

EN 12266-1

WORKING TEMP.:

Max. +70°C

DN	G	K		D		L	H	n-ød		b	M	S	W (kg)
		PN10	PN16	PN10	PN16			PN10	PN16				
40	84	110	110	150	150	240	205	4-19	4-19	19	200	14	9.5
50	99	125	125	165	165	250	205	4-19	4-19	19	200	14	10.5
65	118	145	145	185	185	270	225	4-19	4-19	19	200	17	13.5
80	132	160	160	200	200	280	250	8*-19	8-19	19	200	17	15.5
100	156	180	180	220	220	300	292	8-19	8-19	19	250	19	22
125	184	210	210	250	250	325	329	8-19	8-19	19	250	19	26
150	211	240	240	285	285	350	379	8-23	8-23	19	350	19	37
200	266	295	295	340	340	400	482	8-23	12-23	20	350	24	59
250	319	350	355	395	405	450	560	12-23	12-28	22	500	27	90
300	370	400	410	445	460	500	636	12-23	12-28	24.5	500	27	126

DENOMINAZIONE PART	MATERIALI MATERIALS
1 CORPO BODY	EN-GJS 500-7 EN-GJS 500-7
2 RIVESTIMENTO CUNEO WEDGE	GOMMA EPDM (o NBR) EPDM COATED (or NBR)
3 STRUTTURA CUNEO CORE	EN-GJS 500-7 EN-GJS 500-7
3b GUIDA GUIDE	NYLON NYLON
4 MADREVITE STEM NUT	BRONZO ALLUMINIO ALUMINIUM BRONZE
5 ASSE STEM	ACC.INOX AISI 420 (EN 1.4021) SS AISI 420 (EN 1.4021)
6 VITE SCREW	ACCIAIO ZINCATO 8.8 GALVANIZED STEEL 8.8
7 GUARNIZIONE GASKET	EPDM EPDM
8 CAPPELLO BONNET	EN-GJS 500-7 EN-GJS 500-7
9 BOCCOLA BUSHING	POM POM
10 O-RING O-RING	NBR NBR
11 BOCCOLA DI TENUTA PACKING GLAND	OTTONE BRASS
12 PARAPOLVERE DUSTPROOF	NBR NBR
13 VOLANTINO HANDWHEEL	ACCIAIO S235JR STEEL S235JR

RIVESTIMENTO ESTERNO/INTERNO: Polvere epossidica di colore blu RAL 5015 con spessore 250µm.

SURFACE PROTECTION: FBE coating process with epoxy resin powder of blue colour RAL 5015 and thickness of 250µm.

PN 10 - Art. A020 T

PN 16 - Art. A021

SARACINESCA CUNEO GOMMATO PN10/16 CORPO PIATTO

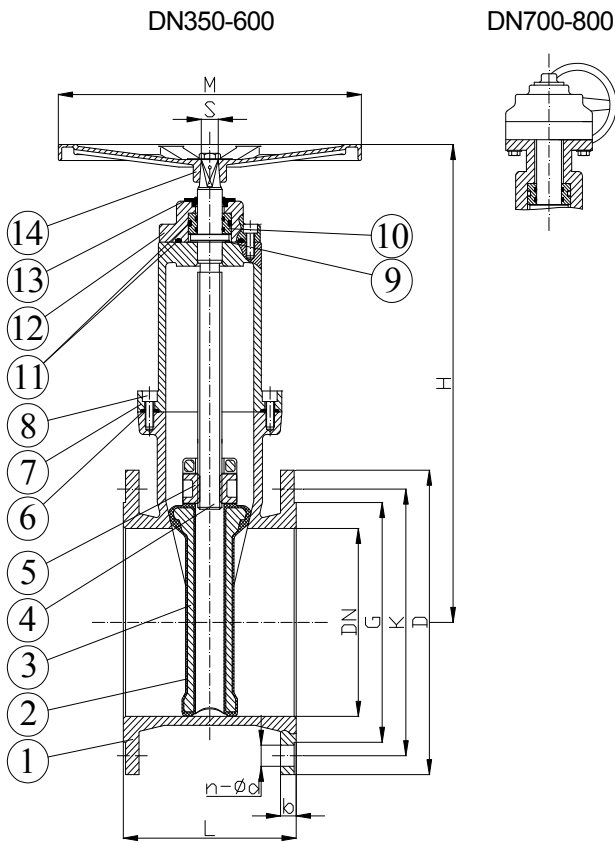
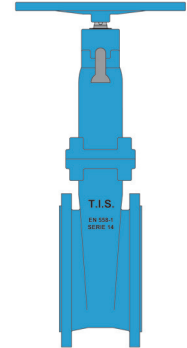
SOFT SEATED GATE VALVE PN10/16 SHORT BODY

APPLICAZIONE:

Fornitura e distribuzione acqua potabile, trattamento acque reflue e sistemi fognari, settori industriali.

APPLICATION:

Drinkable water supply and distribution, waste water treatment and sewerage.



NORMA PROGETTO:

EN 1171
EN 1074-1 ed EN 1074-2

SCARTAMENTO:

EN 558 Serie14

FLANGE:

EN 1092-2

COLLAUDI:

EN 12266-1

TEMP. ESERCIZIO:

Max. +70°C

DESIGN STANDARD:

EN 1171
EN 1074-1 and EN 1074-2

FACE TO FACE:

EN 558 Series14

FLANGES:

EN 1092-2

TESTS:

EN 12266-1

WORKING TEMP.:

Max. +70°C

DN	PN	G	K	D	L	H	n-ød	b	M	S	W(kg)
350	10	429	460	505	290	845	16-23	24.5	500	27	184
	16	429	470	520	290	845	16-28	26.5	500	27	192
400	10	480	515	565	310	975	16-28	24.5	640	32	267
	16	480	525	580	310	975	16-31	28	640	32	278
450	10	530	565	615	330	1080	20-28	25.5	800	32	330
	16	548	585	640	330	1080	20-31	30	800	32	355
500	10	582	620	670	350	1120	20-28	26.5	800	36	391
	16	609	650	715	350	1120	20-34	31.5	800	36	411
600	10	682	725	780	390	1330	20-31	30	800	41	652
	16	720	770	840	390	1330	20-37	36	800	41	679
700*	10	794	840	895	430	1450	24-31	32.5	-	-	821
	16	794	840	910	430	1450	24-37	39.5	-	-	836
800*	10	901	950	1015	470	1640	24-34	35	-	-	1250
	16	901	950	1025	470	1640	24-41	43	-	-	1269

*Con RIDUTTORE - *With GEAR BOX

DENOMINAZIONE PART	MATERIALI MATERIALS
1 CORPO BODY	EN-GJS 500-7 EN-GJS 500-7
2 RIVESTIMENTO CUNEO WEDGE	GOMMA EPDM (o NBR) EPDM COATED (or NBR)
3 STRUTT. CUNEO CORE	EN-GJS 500-7 EN-GJS 500-7
4 ASSE STEM	ACC.INOX AISI 420 (EN 1.4021) SS AISI 420 (EN 1.4021)
5 MADREVITE STEM NUT	BRONZO ALLUMINIO ALUMINIUM BRONZE
6 GUARNIZIONE GASKET	EPDM EPDM
7 CAPPELLO BONNET	EN-GJS 500-7 EN-GJS 500-7
8 VITE SCREW	ACCIAIO ZINCATO 8.8 GALVANIZED STEEL 8.8
9 RONDELLA WASHER	POM POM
10 BOCCOLA DI TENUTA SEAL BUSHING	POM POM
11 O-RING O-RING	NBR NBR
12 COPERCHIO COVER	EN-GJS 500-7 EN-GJS 500-7
13 PARAPOLVERE DUSTPROOF	NBR NBR
14 VOLANTINO HANDWHEEL	EN-GJS 500-7 EN-GJS 500-7

RIVESTIMENTO ESTERNO/INTERNO: Polvere epossidica di colore blu RAL 5015 con spessore 250µm.

SURFACE PROTECTION: FBE coating process with epoxy resin powder of blue colour RAL 5015 and thickness of 250µm.

PN 10 - Art. A022

PN 16 - Art. A023

SARACINESCA CUNEO GOMMATO PN10/16 CORPO OVALE

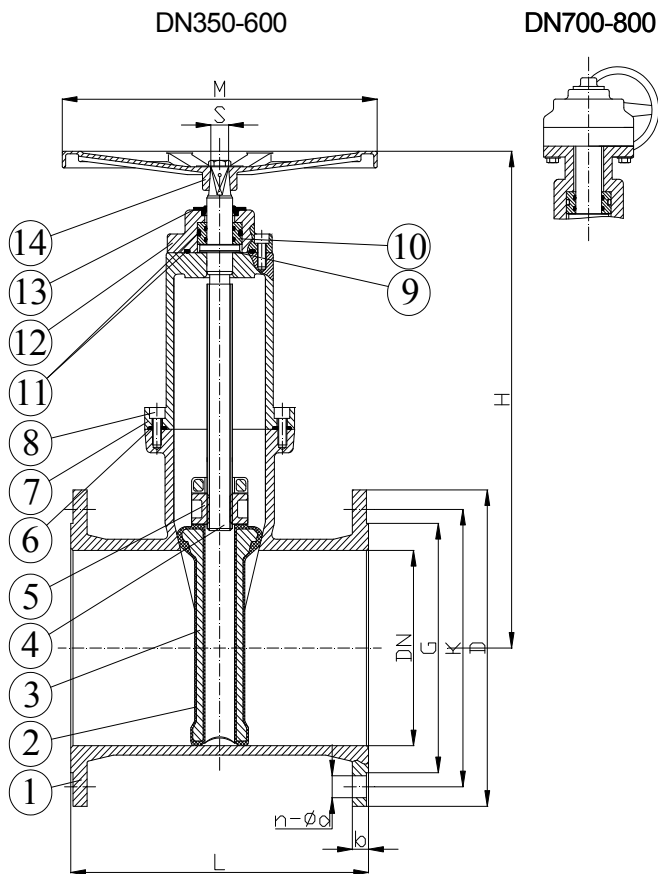
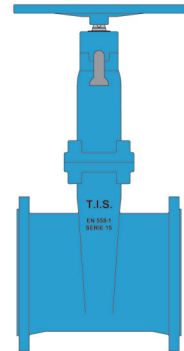
SOFT SEATED GATE VALVE PN10/16 LONG BODY

APPLICAZIONE:

Fornitura e distribuzione acqua potabile, trattamento acque reflue e sistemi fognari, settori industriali.

APPLICATION:

Drinkable water supply and distribution, waste water treatment and sewerage.



NORMA PROGETTO:

EN 1171
EN 1074-1 ed EN 1074-2

SCARTAMENTO:

EN 558 Serie15

FLANGE:

EN 1092-2

COLLAUDI:

EN 12266-1

TEMP. ESERCIZIO:

Max. +70°C

DESIGN STANDARD:

EN 1171
EN 1074-1 and EN 1074-2

FACE TO FACE:

EN 558 Series15

FLANGES:

EN 1092-2

TESTS:

EN 12266-1

WORKING TEMP.:

Max. +70°C

DN	PN	G	K	D	L	H	n-ød	b	M	S	W(kg)
350	10	429	460	505	550	845	16-23	24.5	500	27	209
	16	429	470	520	550	845	16-28	26.5	500	27	220
400	10	480	515	565	600	975	16-28	24.5	640	32	299
	16	480	525	580	600	975	16-31	28	640	32	310
450	10	530	565	615	650	1080	20-28	25.5	800	32	400
	16	548	585	640	650	1080	20-31	30	800	32	410
500	10	582	620	670	700	1120	20-28	26.5	800	36	447
	16	609	650	715	700	1120	20-34	31.5	800	36	467
600	10	682	725	780	800	1330	20-31	30	800	41	749
	16	720	770	840	800	1330	20-37	36	800	41	776
700*	10	794	840	895	900	1450	24-31	32.5	-	-	973
	16	794	840	910	900	1450	24-37	39.5	-	-	988
800*	10	901	950	1015	1000	1640	24-34	35	-	-	1465
	16	901	950	1025	1000	1640	24-41	43	-	-	1484

*Con RIDUTTORE - *With GEAR BOX

DENOMINAZIONE PART	MATERIALI MATERIALS
1 CORPO BODY	EN-GJS 500-7 EN-GJS 500-7
2 RIVESTIMENTO CUNEO WEDGE	GOMMA EPDM (o NBR) EPDM COATED (or NBR)
3 STRUTT. CUNEO CORE	EN-GJS 500-7 EN-GJS 500-7
4 ASSE STEM	ACC.INOX AISI 420 (EN 1.4021) SS AISI 420 (EN 1.4021)
5 MADREVITE STEM NUT	BRONZO ALLUMINIO ALUMINIUM BRONZE
6 GUARNIZIONE GASKET	EPDM EPDM
7 CAPPELLO BONNET	EN-GJS 500-7 EN-GJS 500-7
8 VITE SCREW	ACCIAIO ZINCATO 8.8 GALVANIZED STEEL 8.8
9 RONDELLA WASHER	POM POM
10 BOCCOLA DI TENUTA SEAL BUSHING	POM POM
11 O-RING O-RING	NBR NBR
12 COPERCHIO COVER	EN-GJS 500-7 EN-GJS 500-7
13 PARAPOLVERE DUSTPROOF	NBR NBR
14 VOLANTINO HANDWHEEL	EN-GJS 500-7 EN-GJS 500-7

RIVESTIMENTO ESTERNO/INTERNO: Polvere epossidica di colore blu RAL 5015 con spessore 250µm.

SURFACE PROTECTION: FBE coating process with epoxy resin powder of blue colour RAL 5015 and thickness of 250µm.

PN 10 - Art. A022

PN 16 - Art. A023

SARACINESCA CUNEO GOMMATO CORPO OVALE CON RIDUTTORE DI SFORZO E BY-PASS

SOFT SEATED GATE VALVE LONG BODY WITH GEAR BOX AND BY-PASS

APPLICAZIONE:

Fornitura e distribuzione acqua potabile, trattamento acque reflue e sistemi fognari, settori industriali.

APPLICATION:

Drinkable water supply and distribution, waste water treatment and sewerage.

NORMA PROGETTO:

EN 1171
EN 1074-1 ed EN 1074-2

SCARTAMENTO:

EN 558 Serie15

FLANGE:

EN 1092-2

COLLAUDI:

EN 12266-1

TEMP. ESERCIZIO:

Max. +70°C

DESIGN STANDARD:

EN 1171
EN 1074-1 and EN 1074-2

FACE TO FACE:

EN 558 Series15

FLANGES:

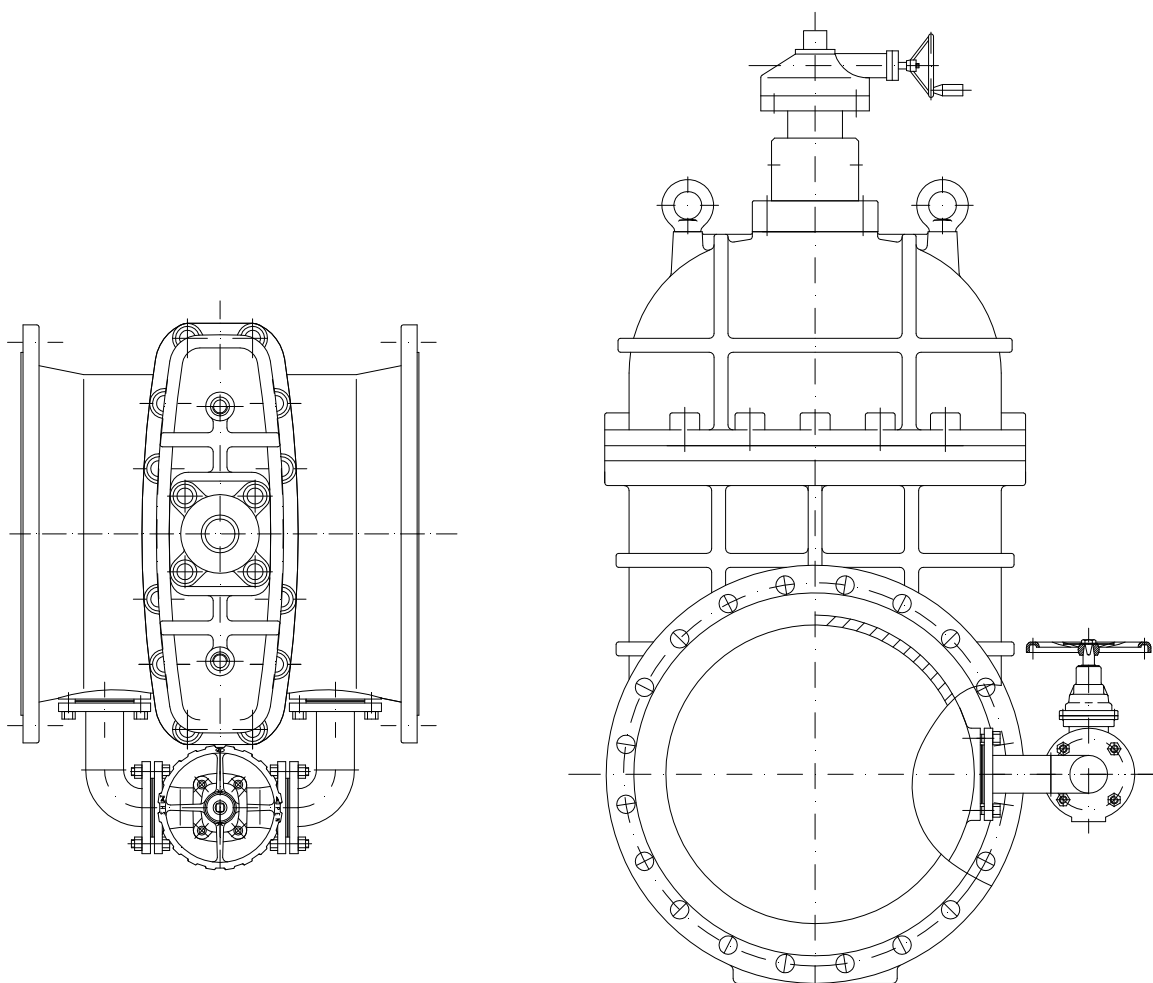
EN 1092-2

TESTS:

EN 12266-1

WORKING TEMP.:

Max.+70°C



RIVESTIMENTO ESTERNO/INTERNO: Polvere epossidica di colore blu RAL 5015 con spessore 250µm.

SURFACE PROTECTION: FBE coating process with epoxy resin powder of blue colour RAL 5015 and thickness of 250µm.

PN 25 - Art. A025

SARACINESCA CUNEO GOMMATO PN25 CORPO OVALE

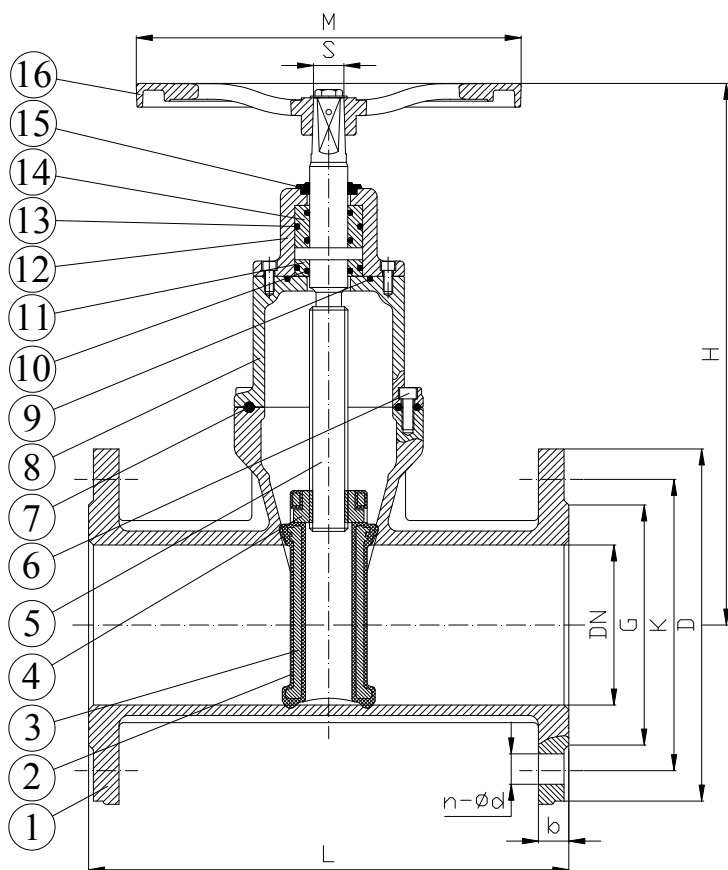
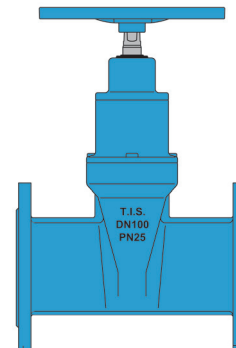
SOFT SEATED GATE VALVE PN25 LONG BODY

APPLICAZIONE:

Fornitura e distribuzione acqua potabile, trattamento acque reflue e sistemi fognari, settori industriali.

APPLICATION:

Drinkable water supply and distribution, waste water treatment and sewerage.



NORMA PROGETTO:

EN 1171
EN 1074-1 ed EN 1074-2

SCARTAMENTO:

EN 558 Serie15

FLANGE:

EN 1092-2

COLLAUDI:

EN 12266-1

TEMP. ESERCIZIO:

Max. +70°C

DESIGN STANDARD:

EN 1171
EN 1074-1 and EN 1074-2

FACE TO FACE:

EN 558 Series15

FLANGES:

EN 1092-2

TESTS:

EN 12266-1

WORKING TEMP.:

Max. +70°C

DENOMINAZIONE PART	MATERIALI MATERIALS
1 CORPO BODY	EN-GJS 500-7 EN-GJS 500-7
2 RIVESTIMENTO CUNEO WEDGE	GOMMA EPDM (o NBR) EPDM COATED (or NBR)
3 STRUTT. CUNEO CORE	EN-GJS 500-7 EN-GJS 500-7
4 MADREVITE STEM NUT	BRONZO ALLUMINIO ALUMINIUM BRONZE
5 ASSE STEM	ACC.INOX AISI 420 (EN 1.4021) SS AISI 420 (EN 1.4021)
6 VITE SCREW	ACCIAIO ZINCATO 8.8 GALVANIZED STEEL 8.8
7 GUARNIZIONE GASKET	EPDM EPDM
8 CAPPELLO BONNET	EN-GJS 500-7 EN-GJS 500-7
9 O-RING O-RING	NBR NBR
10 O-RING O-RING	NBR NBR
11 BOCCOLA DI TENUTA SEAL BUSHING	POM POM
12 COPERCHIO COVER	EN-GJS 500-7 EN-GJS 500-7
13 O-RING O-RING	NBR NBR
14 BOCCOLA DI TENUTA SEAL BUSHING	BRONZO ALLUMINIO ALUMINIUM BRONZE
15 PARAPOLVERE DUSTPROOF	NBR NBR
16 VOLANTINO HANDWHEEL	EN-GJS 500-7 EN-GJS 500-7

DN	G	K	D	L	H	n-ød	b	M	S	W (kg)
50	99	125	165	250	260	4-19	19	200	14	12.5
65	118	145	185	270	270	8-19	19	200	17	14
80	132	160	200	280	305	8-19	19	200	17	18.5
100	156	190	235	300	345	8-23	19	250	19	24
125	184	220	270	325	355	8-28	19	250	19	32
150	211	250	300	350	464	8-28	20	350	19	43
200	274	310	360	400	570	12-28	22	350	24	69
250	330	370	425	450	666	12-31	24.5	500	27	135
300	389	430	485	500	760	16-31	27.5	500	27	196

RIVESTIMENTO ESTERNO/INTERNO: Polvere epossidica di colore blu RAL 5015 con spessore 250µm.

SURFACE PROTECTION: FBE coating process with epoxy resin powder of blue colour RAL 5015 and thickness of 250µm.

PN 10 Serie 14 - Art. A020 PMOT
PN 16 Serie 14 - Art. A021
PMOT PN 10 Serie 15 - Art. A022
PMOT PN 16 Serie 15 -
Art.A023 PMOT

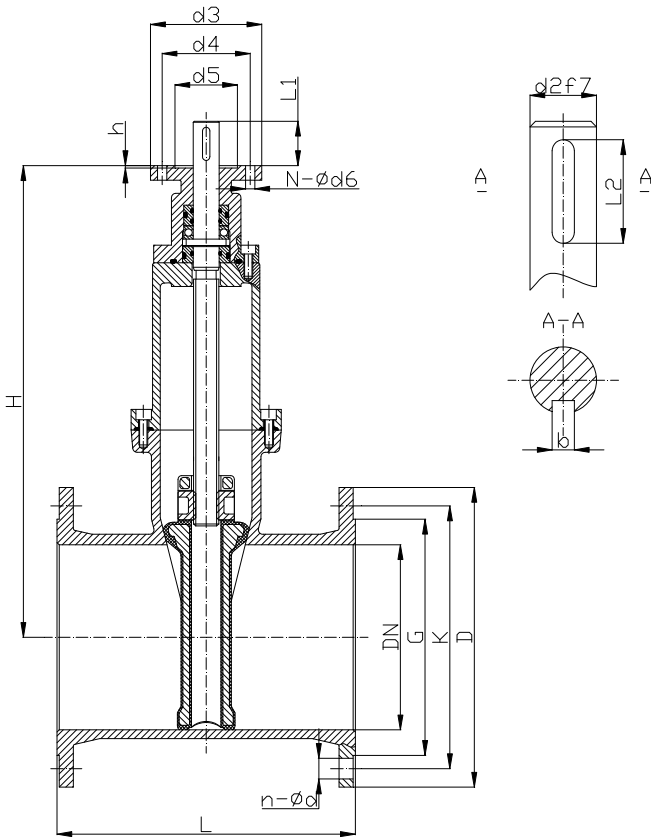
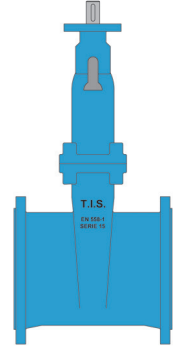
SARACINESCA CUNEO GOMMATO PREDISPOSTA PER LA MOTORIZZAZIONE
SOFT SEATED GATE VALVE WITH MOTOR DRIVE PREARRANGEMENT

APPLICAZIONE:

Fornitura e distribuzione acqua potabile, trattamento acque reflue e sistemi fognari, settori industriali.

APPLICATION:

Drinkable water supply and distribution, waste water treatment and sewerage.



NORMA PROGETTO: EN 1171, EN 1074-1 ed EN 1074-2
SCARTAMENTO: EN 558 Serie14-15
FLANGE: EN 1092-2
FLANGIA SUPERIORE: ISO 5210
COLLAUDI: EN 12266-1
TEMP. ESERCIZIO: Max. +70°C
DESIGN STANDARD: EN 1171, EN 1074-1 and EN 1074-2
FACE TO FACE: EN 558 Series14-15
FLANGES: EN 1092-2
TOP FLANGE: ISO 5210
TESTS: EN 12266-1
WORKING TEMP.: Max. +70°C

COPPIA ALL'ASSE - BARESHAFT TORQUE

DN	Nm	DN	Nm
50	50	300	225
65	60	350	295
80	60	400	355
100	85	450	490
125	100	500	555
150	105	600	610
200	155	700**	1000
250	185	800**	1250

RIVESTIMENTO ESTERNO/INTERNO: Polvere epossidica di colore blu RAL 5015 con spessore 250µm.

SURFACE PROTECTION: FBE coating process with epoxy resin powder of blue colour RAL 5015 and thickness of 250µm.

DN	G		K		D		L	H	n-ød		d2	d3	d4	d5	N-ød6	L1	L2	b	h	Nr. di giri No. of turns	
	PN10	PN16	PN10	PN16	PN10	PN16			S14	S15											PN10
50	99	99	125	125	165	165	150	250	228	4-19	4-19	20	125	102	71	4-12	45	36	6	4	14
65	118	118	145	145	185	185	170	270	250	4-19	4-19	20	125	102	71	4-12	45	36	6	4	18
80	132	132	160	160	200	200	180	280	282	8-19	8-19	20	125	102	71	4-12	45	36	6	4	21
100	156	156	180	180	220	220	190	300	320	8-19	8-19	20	125	102	71	4-12	45	36	6	4	21
125	184	184	210	210	250	250	200	325	400	8-19	8-19	20	125	102	71	4-12	45	36	6	4	26
150	211	211	240	240	285	285	210	350	425	8-23	8-23	20	125	102	71	4-12	45	36	6	4	31
200	266	266	295	295	340	340	230	400	526	8-23	12-23	30	175	140	101	4-18	50	40	8	5	35
250	319	319	350	355	395	405	250	450	610	12-23	12-28	30	175	140	101	4-18	50	40	8	5	43
300	370	370	400	410	445	460	270	500	756	12-23	12-28	30	175	140	101	4-18	50	40	8	5	44
350	429	429	460	470	505	520	290	550	845	16-23	16-28	30	175	140	101	4-18	50	40	8	5	51
400	480	489	515	525	565	580	310	600	910	16-28	16-31	30	175	140	101	4-18	50	40	8	5	51
450	530	548	565	585	615	640	330	650	1000	20-28	20-31	30	175	140	101	4-18	50	40	8	5	57
500	582	609	620	650	670	715	350	700	1052	20-28	20-34	40	210	165	131	4-22	60	50	12	6	64
600	682	720	725	770	780	840	390	800	1342	20-31	20-37	40	210	165	131	4-22	60	50	12	6	68
700*	794	794	840	840	895	910	430	900	1813	24-31	24-37	30	175	140	100	4-18	50	45	8	5	79
800*	901	901	950	950	1015	1025	470	1000	1693	24-34	24-41	30	175	140	100	8-18	50	45	8	5	89

PN 10 Serie 14 - Art. A020 IND
PN 16 Serie 14 - Art. A021 IND
PN 10 Serie 15 - Art. A022 IND
PN 16 Serie 15 - Art. A023 IND

SARACINESCA CUNEO GOMMATO CON INDICATORE DI POSIZIONE

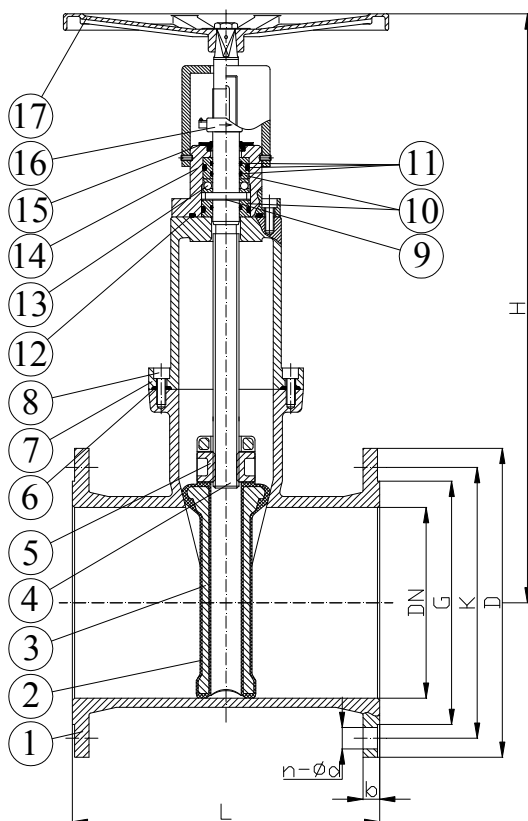
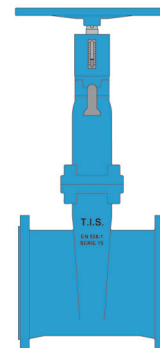
SOFT SEATED GATE VALVE WITH MECHANICAL POSITION INDICATOR

APPLICAZIONE:

Fornitura e distribuzione acqua potabile, trattamento acque reflue e sistemi fognari, settori industriali.

APPLICATION:

Drinkable water supply and distribution, waste water treatment and sewerage.



NORMA PROGETTO:

EN 1171
 EN 1074-1 ed EN 1074-2

SCARTAMENTO:

EN 558 Serie14-15

FLANGE:

EN 1092-2

COLLAUDI:

EN 12266-1

TEMP. ESERCIZIO:

Max. +70°C

DESIGN STANDARD:

EN 1171
 EN 1074-1 and EN 1074-2

FACE TO FACE:

EN 558 Series14-15

FLANGES:

EN 1092-2

TESTS:

EN 12266-1

WORKING TEMP.:

Max. +70°C

DENOMINAZIONE PART	MATERIALI MATERIALS
1 CORPO BODY	EN-GJS 500-7 EN-GJS 500-7
2 RIVESTIMENTO CUNEO WEDGE	GOMMA EPDM (o NBR) EPDM COATED (or NBR)
3 STRUTT. CUNEO CORE	EN-GJS 500-7 EN-GJS 500-7
4 ASSE STEM	ACC. INOX AISI 420 (EN 1.4021) SS AISI 420 (EN 1.4021)
5 MADREVITE STEM NUT	BRONZO ALLUMINIO ALUMINIUM BRONZE
6 GUARNIZIONE GASKET	EPDM EPDM
7 CAPPELLO BONNET	EN-GJS 500-7 EN-GJS 500-7
8 VITE SCREW	ACCIAIO ZINCATO 8.8 GALVANIZED STEEL 8.8
9 RONDELLA (DN500-800) WASHER (DN500-800)	POM POM
10 BOCCOLA DI TENUTA SEAL BUSHING	BRONZO BRONZE
11 O-RING O-RING	NBR NBR
12 O-RING O-RING	NBR NBR
13 CUSCINETTO BEARING	— —
14 COPERCHIO COVER	EN-GJS 500-7 EN-GJS 500-7
15 PARAPOLVERE DUSTPROOF	NBR NBR
16 INDICATORE INDICATOR	BRONZO ALLUMINIO ALUMINIUM BRONZE
17 VOLANTINO HANDWHEEL	EN-GJS 500-7 EN-GJS 500-7

DN	G		K		D		L		H	n-ød		b	
	PN10	PN16	PN10	PN16	PN10	PN16	S14	S15		PN10	PN16	PN10	PN16
50	99	99	125	165	165	150	250	380	4-19	4-19	19	19	
65	118	118	145	185	185	170	270	400	4-19	4-19	19	19	
80	132	132	160	200	200	180	280	430	8-19	8-19	19	19	
100	156	156	180	220	220	190	300	460	8-19	8-19	19	19	
125	184	184	210	250	250	200	325	510	8-19	8-19	19	19	
150	211	211	240	285	285	210	350	584	8-23	8-23	19	19	
200	266	266	295	340	340	230	400	700	8-23	12-23	20	20	
250	319	319	350	395	405	250	450	760	12-23	12-28	22	22	
300	370	370	400	445	460	270	500	870	12-23	12-28	24.5	24.5	
350	429	429	460	505	520	290	550	1000	16-23	16-28	24.5	26.5	
400	480	489	515	525	565	310	600	1120	16-28	16-31	24.5	28	
450	530	548	565	585	615	330	650	1260	20-28	20-31	25.5	30	
500	582	609	620	650	670	350	700	1300	20-28	20-34	26.5	31.5	
600	682	720	725	770	780	390	800	1510	20-31	20-37	30	36	

RIVESTIMENTO ESTERNO/INTERNO: Polvere epossidica di colore blu RAL 5015 con spessore 250µm.

SURFACE PROTECTION: FBE coating process with epoxy resin powder of blue colour RAL 5015 and thickness of 250µm.