

## PN16 Art. 038002TIS1

**GOMITO A 90° CODOLO LUNGO, PE 100, SDR11**

**ELBOW 90° LONG SPIGOT, PE 100, SDR11**

### APPLICAZIONE:

Impianti di acquedottistica, di convogliamento gas combustibili, di fognature civili ed industriali, di irrigazione etc...

### APPLICATION:

Water pipeline systems, for gas, civil and industrial sewerage, irrigation etc...

**NORME PRODOTTO:** UNI EN 1555-3  
UNI EN 12201-3

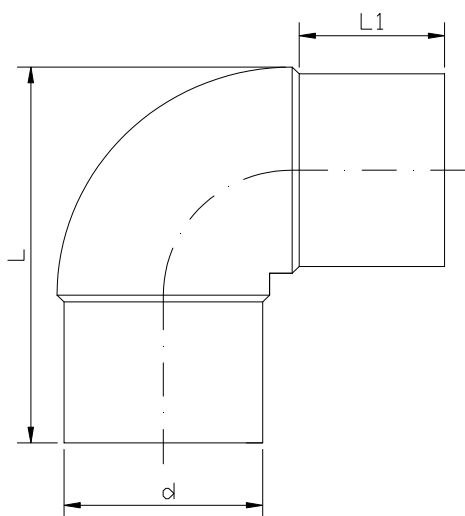
**PRODUCT STANDARDS:** UNI EN 1555-3  
UNI EN 12201-3

**TEMPERATURA D'ESERCIZIO:** Max. +60°C

**WORKING TEMPERATURE:** Max. +60°C

**PRESSIONE DI ESERCIZIO MAX:** Acqua PN16  
Gas S5

**MAX WORKING PRESSURE:** Water PN16  
Gas S5



|           |    |    |    |     |     |     |     |     |     |     |     |     |     |     |     |     |     |     |
|-----------|----|----|----|-----|-----|-----|-----|-----|-----|-----|-----|-----|-----|-----|-----|-----|-----|-----|
| <b>d</b>  | 20 | 25 | 32 | 40  | 50  | 63  | 75  | 90  | 110 | 125 | 140 | 160 | 180 | 200 | 225 | 250 | 280 | 315 |
| <b>L</b>  | 60 | 80 | 90 | 100 | 163 | 167 | 184 | 187 | 225 | 240 | 240 | 288 | 335 | 335 | 370 | 410 | 460 | 485 |
| <b>L1</b> | 36 | 43 | 50 | 53  | 57  | 63  | 88  | 90  | 90  | 108 | 100 | 112 | 135 | 121 | 140 | 150 | 150 | 150 |