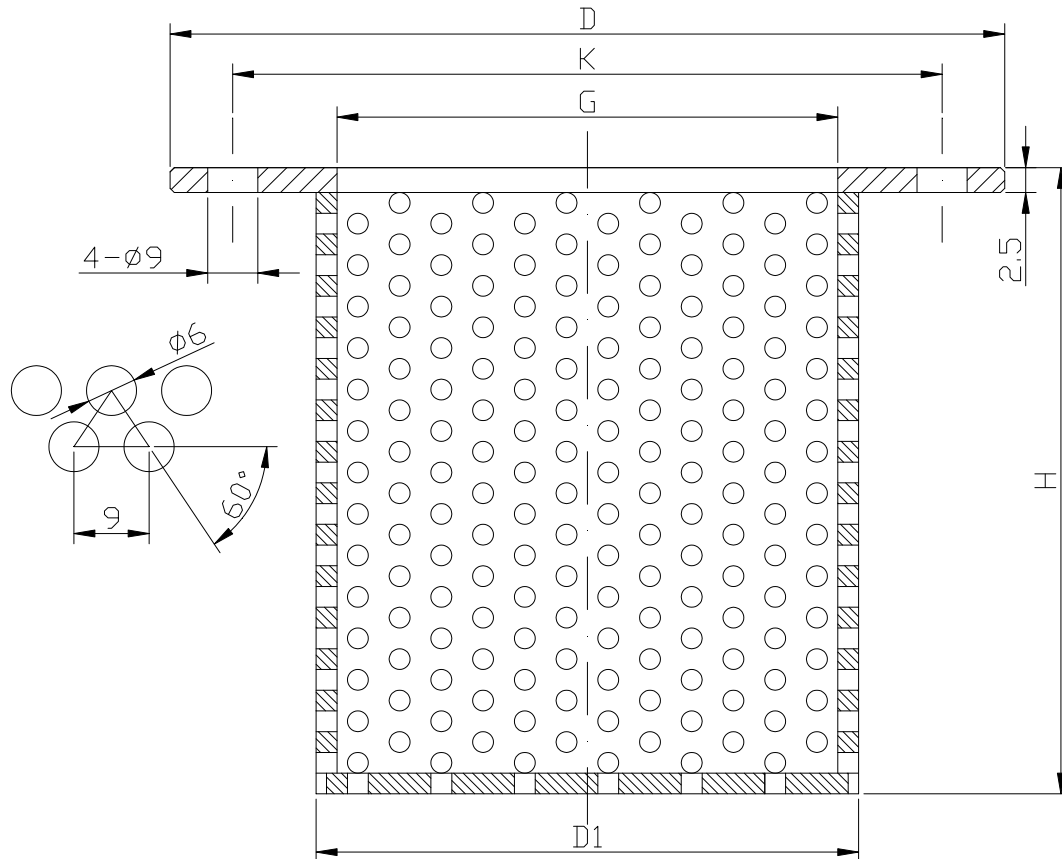


Art. G050 TIS

FILTRO DI FONDO A CESTELLO, FLANGIATO

FILTERING SCREEN, FLANGED



DENOMINAZIONE
PART

MATERIALI
MATERIALS

CORPO
BODY

ACCIAIO ZINCATO
GALVANIZED STEEL

DN	G	K	D	H	D1
50	107	129	156	80	111
65	127	149	176	100	131
80	144	164	192	120	148
100	164	184	212	150	168
125	194	214	242	175	198
150	218	244	275	200	222
200	274	299	330	250	278
250	325	355	382	300	329
300	380	413	445	350	384

PN 10 Art. C087

PN 16 Art. C086

VALVOLA DI RITEGNO ASSIALE PN10/16

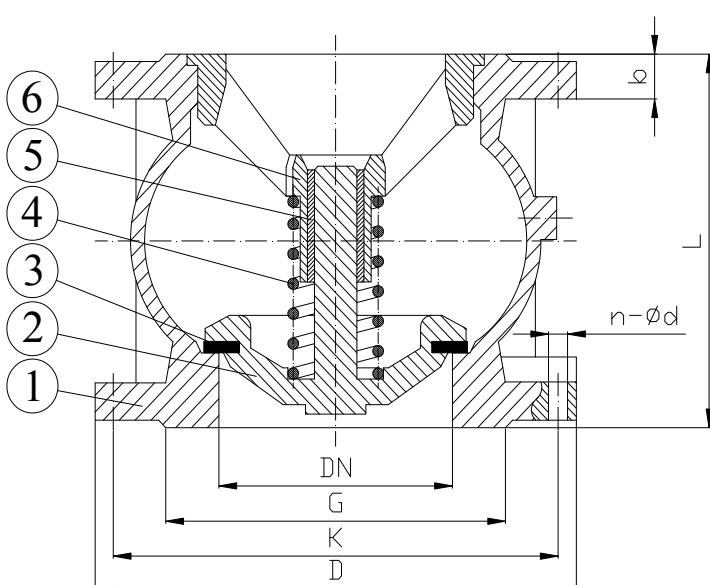
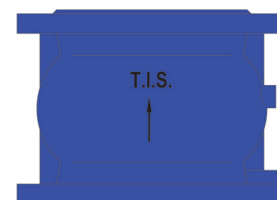
AXIAL DISC CHECK VALVE PN10/16

APPLICAZIONE:

Stazioni di pompaggio per acqua, irrigazione e depurazione acque.

APPLICATION:

Pumping stations and networks for clean water distribution, irrigation and water treatment.



NORMA PROGETTO: EN 1074-3
FLANGE: EN 1092-2
COLLAUDI: EN 12266-1
TEMP. ESERCIZIO: Max. +70°C
CONTROPRESSIONE: Min. 0,3 bar
DESIGN STANDARD: EN 1074-3
FLANGES: EN 1092-2
TESTS: EN 12266-1
WORKING TEMP.: Max. +70°C
BACKPRESSURE: Min. 0,3 bar

DENOMINAZIONE PART	MATERIALI MATERIALS
1 CORPO BODY	EN-GJL 250 EN-GJL 250
2 DISCO DISC	EN-GJS 400-15 EN-GJS 400-15
3 GUARNIZIONE SEAL	EPDM EPDM
4 MOLLA SPRING	ACCIAIO INOX STAINLESS STEEL
5 GUIDA GUIDE	OTTONE BRASS
6 GUIDA GUIDE	EN-GJS 400-15 EN-GJS 400-15

RIVESTIMENTO ESTERNO/INTERNO: Polvere epossidica di colore blu RAL5017 con spessore 200µm.

SURFACE PROTECTION: FBE coating process with epoxy resin powder of blue colour RAL5017 and thickness of 200µm.

DN	G	K		D		n-ød		b		L	W(kg)
		PN10	PN16	PN10	PN16	PN10	PN16	PN10	PN16		
50	98	125	125	165	165	4-19	4-19	20	20	100	5.7
65	118	145	145	185	185	4-19	4-19	20	20	120	8.7
80	132	160	160	200	200	8-19	8-19	22	22	140	10.8
100	156	180	180	220	220	8-19	8-19	24	24	170	13.5
125	184	210	210	250	250	8-19	8-19	26	26	200	21
150	211	240	240	285	285	8-23	8-23	26	26	230	30
200	260	295	295	340	340	8-23	12-23	26	30	300	49
250	319	350	355	405	405	12-23	12-28	28	32	370	73.3
300	370	400	410	460	460	12-23	12-28	28	32	410	90

PN 10 - Art. C068

PN 16 - Art. C067

VALVOLA DI RITEGNO A PALLA FLANGIATA PN10/16

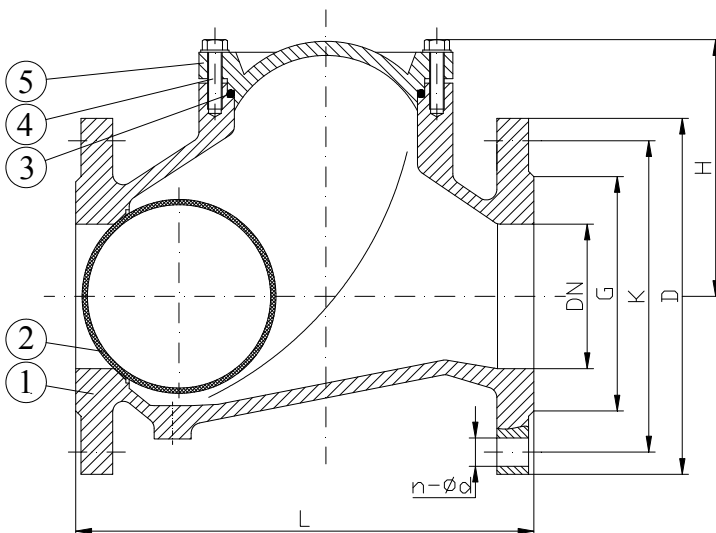
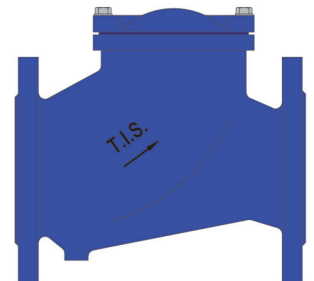
FLANGED BALL CHECK VALVE PN10/16

APPLICAZIONE:

Sistemi di pompaggio per acqua, liquidi viscosi, densi ed aggressivi.

APPLICATION:

Pumping station for clean water or viscous fluids.



NORMA PROGETTO:	EN 1074-3
SCARTAMENTO:	EN 558 Serie 48
FLANGE:	EN 1092-2
COLLAUDI:	EN 12266-1
TEMP. ESERCIZIO:	Max. +70°C
CONTROPRESSIONE:	Min. 0,3/0,5 bar

DESIGN STANDARD:	EN 1074-3
FACE TO FACE:	EN 558 Series 48
FLANGES:	EN 1092-2
TESTS:	EN 12266-1
WORKING TEMP.:	Max. +70°C
BACKPRESSURE:	Min. 0,3/0,5 bar

DN	G	K		D		n-ød		L	H	W (kg)
		PN10	PN16	PN10	PN16	PN10	PN16			
50	99	125	125	165	165	4-19	4-19	200	106	7.7
65	118	145	145	185	185	4-19	4-19	240	129	11.2
80	132	160	160	200	200	8*-19	8-19	260	146	15.4
100	156	180	180	220	220	8-19	8-19	300	194	22
125	184	210	210	250	250	8-19	8-19	350	207	33
150	211	240	240	285	285	8-23	8-23	400	240	45
200	266	295	295	340	340	8-23	12-23	500	322	90
250	319	350	355	405	405	12-23	12-28	600	388	163
300	370	400	410	460	460	12-23	12-28	700	458	230
350	429	460	470	520	520	16-23	16-28	800	580	290
400	480	515	525	580	580	16-28	16-31	900	705	450
500	609	620	650	715	715	20-28	20-34	1100	890	580

DENOMINAZIONE PART	MATERIALI MATERIALS
1 CORPO BODY	EN-GJS 400-15 EN-GJS 400-15
2 PALLA BALL	ALLUMINIO+NBR (DN50-150) GHISA + NBR (DN200-DN500) ALUMINUM+NBR (DN50-150) D.I. + NBR (DN200-DN500)
3 COPERCHIO BONNET	EN-GJS 400-15 EN-GJS 400-15
4 VITE BOLT	ACCIAIO INOX A2 STAINLESS STEEL A2
5 GUARNIZIONE GASKET	NBR NBR

RIVESTIMENTO ESTERNO/INTERNO: Polvere epossidica di colore blu RAL 5017 con spessore 200µm.

SURFACE PROTECTION: FBE coating process with epoxy resin powder of blue colour RAL 5017 and thickness of 200µm.

*Disponibile anche con 4 fori

*Available also with 4 holes

Art. C069

VALVOLA DI RITEGNO A PALLA FILETTATA PN10

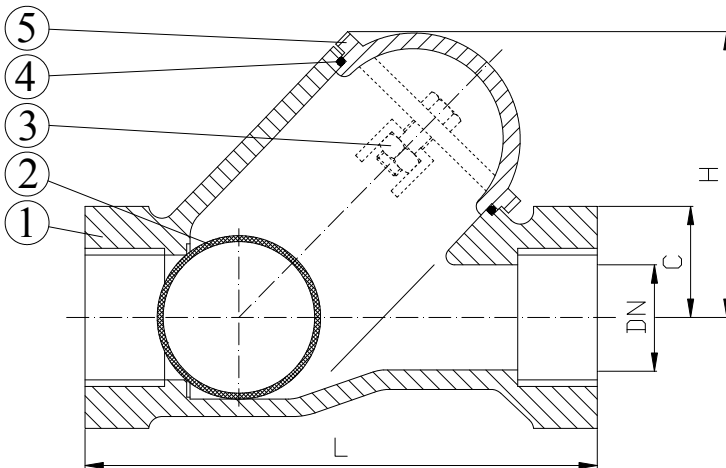
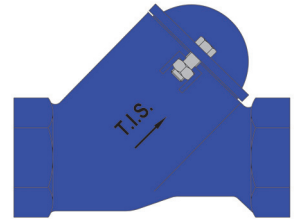
THREADED BALL CHECK VALVE PN10

APPLICAZIONE:

Sistemi di pompaggio per acqua, liquidi viscosi, densi ed aggressivi.

APPLICATION:

Pumping station for clean water or viscous fluids.



ESTREMITA' FILETTATE F/F GAS STANDARD

NORMA PROGETTO: EN 1074-3
TEMP. ESERCIZIO: Max. +70°C
CONTROPRESSIONE: Min. 0,3/0,5 bar

GAS STANDARD THREADED ENDS

DESIGN STANDARD: EN 1074-3
WORKING TEMP.: Max. +70°C
BACKPRESSURE: Min. 0,3/0,5 bar

DENOMINAZIONE PART	MATERIALI MATERIALS
1 CORPO BODY	EN-GJS 400-15 EN-GJS 400-15
2 PALLA BALL	ALLUMINIO + NBR ALUMINIUM + NBR
3 VITE BOLT	ACCIAIO INOX A2 STAINLESS STEEL A2
4 GUARNIZIONE GASKET	NBR NBR
5 COPERCHIO BONNET	EN-GJS 400-15 EN-GJS 400-15

Dim (Inch)	DN	L	H	C	W (kg)
1"	25	125	78	47	1.3
1"1/4	32	132	81	59	1.7
1"1/2	40	145	97	68	2.6
2"	50	174	118	82	4.2
2"1/2	65	200	128	104	5.5
3"	80	243	160	146	10

RIVESTIMENTO ESTERNO/INTERNO: Polvere epossidica di colore blu RAL 5017 con spessore 200µm.

SURFACE PROTECTION: FBE coating process with epoxy resin powder of blue colour RAL 5017 and thickness of 200µm.

PN 10 - Art. C070

PN 16 - Art. C071

VALVOLA DI RITEGNO A CLAPET PN10/16

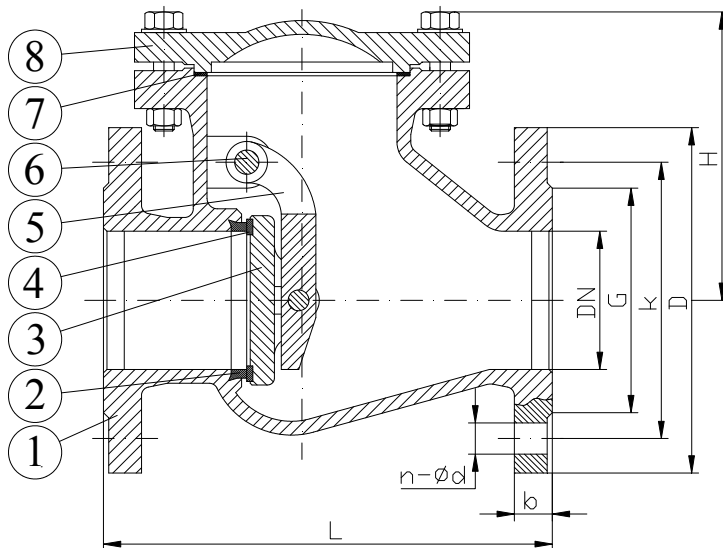
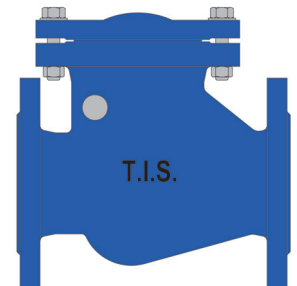
SWING CHECK VALVE PN10/16

APPLICAZIONE:

Installazione per acqua fredda, e fluidi non aggressivi.

APPLICATION:

Suitable for cold water and not acidic fluid water installation.



NORMA PROGETTO:	EN 1074-3
SCARTAMENTO:	EN 558 Serie48
FLANGE:	EN 1092-2
COLLAUDI:	EN 12266-1
TEMP. ESERCIZIO:	Max. +80°C
CONTROPRESSIONE:	Min. 0,3/0,5 bar
DESIGN STANDARD:	EN 1074-3
FACE TO FACE:	EN 558 Series48
FLANGES:	EN 1092-2
TESTS:	EN 12266-1
WORKING TEMP.:	Max. +80°C
BACKPRESSURE:	Min. 0,3/0,5 bar

	DENOMINAZIONE PART	MATERIALI MATERIALS
1	CORPO BODY	EN-GJL 250 EN-GJL 250
2	TENUTA CORPO BODY SEAL RING	OTTONE BRASS
3	DISCO DISC	EN-GJL 250 EN-GJL 250
4	TENUTA DISCO DISC SEAL RING	EPDM EPDM
5	LEVA LEVER	EN-GJS 400-15 EN-GJS 400-15
6	PERNO LEVER PIN	ACC.INOX AISI420 (EN 1.4021) SS AISI420 (EN 1.4021)
7	GUARNIZIONE GASKET	GRAFITE GRAPHITE
8	CAPPELLO BONNET	EN-GJL 250 EN-GJL 250

COLORE: Blu RAL 5017.

COLOUR: Blue RAL 5017.

DN	G		K		D		L	H	b		n-ød		W (kg)
	PN10	PN16	PN10	PN16	PN10	PN16			PN10	PN16	PN10	PN16	
40	84	84	110	110	150	150	180	120	18	18	4-19	4-19	11.5
50	99	99	125	125	165	165	200	140	20	20	4-19	4-19	13.6
65	118	118	145	145	185	185	240	150	20	20	4-19	4-19	21
80	132	132	160	160	200	200	260	165	22	22	8*-19	8-19	26.5
100	156	156	180	180	220	220	300	175	24	24	8-19	8-19	32
125	184	184	210	210	250	250	350	198	26	26	8-19	8-19	45
150	211	211	240	240	285	285	400	229	26	26	8-23	8-23	71.5
200	266	266	295	295	340	340	500	249	26	30	8-23	12-23	95
250	319	319	350	355	395	405	600	310	28	32	12-23	12-28	139
300	370	370	400	410	445	460	700	322	28	32	12-23	12-28	188
350	429	429	460	470	505	520	800	390	30	36	16-23	16-28	275
400	480	480	515	525	565	580	900	445	32	38	16-28	16-31	340

*Disponibile anche con 4 fori / *Available also with 4 holes

PN 10 - Art.

080013

PN 16 - Art.

080012

VALVOLA DI RITEGNO A MEMBRANA IDROSTOP PN10/16

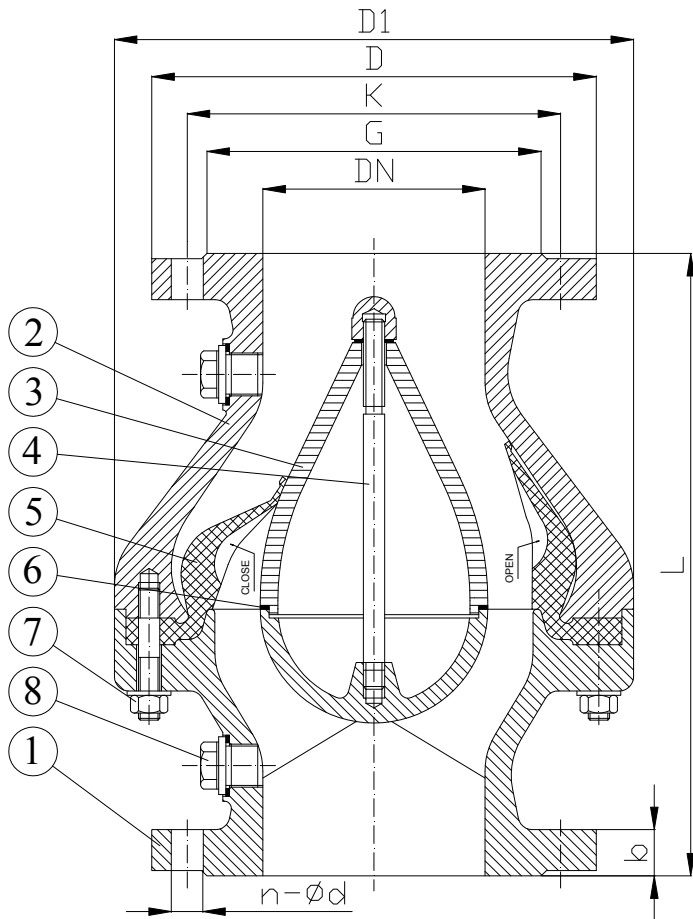
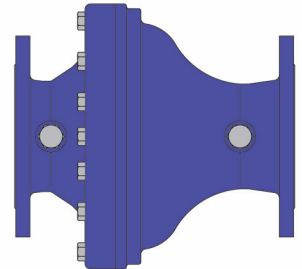
IDROSTOP DIAPHRAGM CHECK VALVE PN10/16

APPLICAZIONE:

Installazione per acqua fredda e fluidi non aggressivi.

APPLICATION:

Suitable for cold water and not acidic fluid water installation.



NORMA PROGETTO: EN 1074-3
SCARTAMENTO: EN 558 Serie 48
FLANGE: EN 1092-2
COLLAUDI: EN 12266-1
TEMP. ESERCIZIO: Max. +80°C
CONTROPRESSIONE: Min. 0,3 bar
DESIGN STANDARD: EN 1074-3
FACE TO FACE: EN 558 Series 48
FLANGES: EN 1092-2
TESTS: EN 12266-1
WORKING TEMP.: Max. +80°C
BACKPRESSURE: Min. 0,3 bar

DENOMINAZIONE PART	MATERIALI MATERIALS
1 CORPO BODY	EN-GJL 250
2 CORPO BODY	EN-GJL 250
3 TENUTA SEAT	EN-GJL 250
4 VITE SCREW	ACC.INOX AISI304 SS AISI304
5 MEMBRANA DIAPHRAGM	EPDM
6 O-RING	EPDM
7 VITERIA BOLT,NUT,WASHER	ACC.INOX A2 SS A2
8 TAPPO PLUG	OTTONE BRASS

RIVESTIMENTO ESTERNO/INTERNO: Polvere epossidica di colore blu RAL 5005 con spessore 200µm.

SURFACE PROTECTION: FBE coating process with epoxy resin powder of blue colour RAL 5005 and thickness of 200µm.

DN	40	50	65	80	100	125	150	200	250	300
G	80	98	118	132	156	184	211	266	319	370
K	PN10	110	125	145	160	180	210	240	295	400
	PN16	110	125	145	160	180	210	240	295	410
D	PN10	150	165	185	200	220	250	285	340	445
	PN16	150	165	185	200	220	250	285	340	460
n-ød	PN10	4-19	4-19	4-19	8-19	8-19	8-19	8-23	8-23	12-23
	PN16	4-19	4-19	4-19	8-19	8-19	8-19	8-23	12-23	12-28
b	18	20	20	22	24	26	26	30	32	32
L	180	200	240	260	300	350	400	500	600	700
D1	150	175	220	220	292	292	292	380	446	550
Kv (m3/h)	25,28	38,05	65,40	99,78	157,65	236,62	351,76	646,08	972,03	1407,05
W (Kg)	9,5	14	16	24	49	50	55	101	146	251

Art. B042 TIS1

VALVOLA DI RITEGNO A FLUSSO AVVIATO CON MOLLA PN16

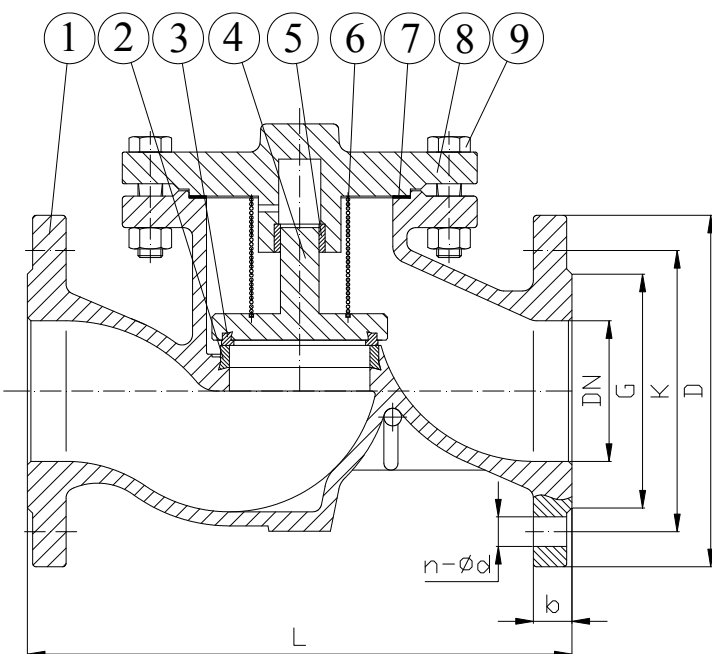
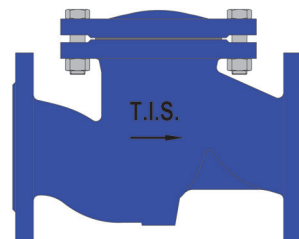
GLOBE CHECK VALVE WITH SPRING PN16

APPLICAZIONE:

Installazioni acqua e vapore.

APPLICATION:

Suitable for water and steam.



NORMA PROGETTO:	EN 1074-1
SCARTAMENTO:	EN 558 Serie 1
FLANGE:	EN 1092-2
COLLAUDI:	EN 12266-1
PRESS. ESERCIZIO:	16 bar ≤ +120°C, 11 bar ≤ +160°C, 9 bar ≤ +200°C
CONTROPRESSIONE:	Min. 0,3 / 0,5 bar
DESIGN STANDARD:	EN 1074-1
FACE TO FACE:	EN 558 Series 1
FLANGES:	EN 1092-2
TESTS:	EN 12266-1
WORKING PRESS.:	16 bar ≤ +120°C, 11 bar ≤ +160°C, 9 bar ≤ +200°C
BACKPRESSURE:	Min. 0,3/0,5 bar

DENOMINAZIONE PART	MATERIALI MATERIALS
1 CORPO BODY	EN-GJL 250 EN-GJL 250
2 ANELLO TENUTA SEAT RING	ACC.INOX AISI420 (EN 1.4021) SS AISI420 (EN 1.4021)
3 ANELLO TENUTA SEAT RING	ACC.INOX AISI420 (EN 1.4021) SS AISI420 (EN 1.4021)
4 OTTURATORE OBTURATOR	EN-GJL 250 EN-GJL 250
5 BOCCOLA BUSHING	RAME COPPER
6 MOLLA SPRING	ACC.INOX AISI304 (EN 1.4301) SS AISI304 (EN 1.4301)
7 GUARNIZIONE GASKET	GRAFITE GRAPHITE
8 CAPPELLO BONNET	EN-GJL 250 EN-GJL 250
9 VITE E DADO BOLT & NUT	ACCIAIO ZINCATO CARBON STEEL GALV.

COLORE: Blu RAL 5017.

COLOUR: Blue RAL 5017.

DN	G	K	D	n-ød	b	f	L	W (kg)
15	46	65	95	4-14	14	2	130	2.5
20	56	75	105	4-14	16	2	150	3.0
25	65	85	115	4-14	16	3	160	4.5
32	76	100	140	4-19	18	3	180	7.0
40	84	110	150	4-19	18	3	200	9.0
50	99	125	165	4-19	20	3	230	12.4
65	118	145	185	4-19	20	3	290	16.5
80	132	160	200	8-19	22	3	310	24.0
100	156	180	220	8-19	24	3	350	30.0
125	184	210	250	8-19	26	3	400	50.0
150	211	240	285	8-23	26	3	480	73.0
200	266	295	340	12-23	30	3	600	117
250	319	355	405	12-28	32	3	730	196