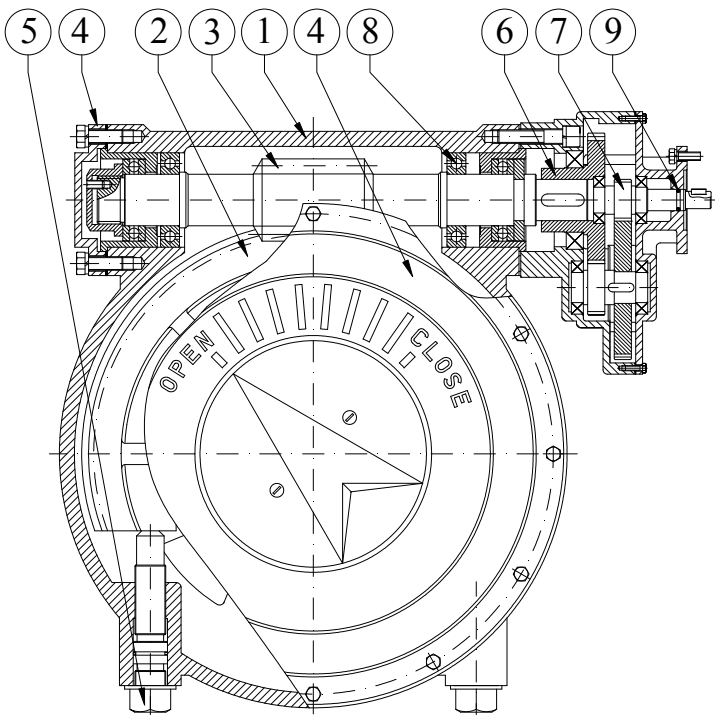


**PN 10 - Art. D140**  
**PN 16 - Art.D141**  
**PN 25 - Art. D142**  
**PN 40 - Art. D149**

## RIDUTTORE MANUALE CON PREDISPOSIZIONE PER LA MOTORIZZAZIONE

### GEAR BOX WITH PREDISPOSITION FOR ELECTRIC ACTUATOR



DENOMINAZIONE PART	MATERIALI MATERIALS
1 CORPO BODY	EN-GJL 250 EN-GJL 250
2 RUOTA DENTATA WORM WHEEL	EN-GJS 400-15 EN-GJS 400-15
3 VITE SENZA FINE WORM SHAFT	ACCIAIO C45 STEEL C45
4 COPERCHIO ADJUSTMENT COVER	EN-GJL 250 EN-GJL 250
5 VITE DI REGOLAZIONE TRAVELING NUT	ACCIAIO INOX AISI 420 SS AISI 420
6 INGRANAGGIO SPUR GEAR	ACCIAIO C45 STEEL C45
7 ALBERO CONDUTTORE PINION	ACCIAIO INOX AISI 420 SS AISI 420
8 CUSCINETTO BEARING	— —
9 O-RING O-RING	EPDM EPDM

**RIVESTIMENTO ESTERNO/INTERNO:** Polvere epossidica di colore blu RAL 5015 con spessore 250µm.

**SURFACE PROTECTION:** FBE coating process with epoxy resin powder of blue colour RAL 5015 and thickness of 250µm.

DN	PN	GEAR BOX	TURNS	DN	PN	GEAR BOX	TURNS	DN	PN	GEAR BOX	TURNS
150	10	T0	8	150	16	T0	8	150	25	T1	10
200	10	T1	10	200	16	T1	10	200	25	T2	12
250	10	T1	10	250	16	T2	12	250	25	T2	12
300	10	T2	12	300	16	T2	12	300	25	T3	20
350	10	T2	12	350	16	T3	20	350	25	T3 A	80
400	10	T3	20	400	16	T3	20	400	25	T4	64
450	10	T3	20	450	16	T3 A	80	450	25	T4	64
500	10	T3 A	80	500	16	T4	64	500	25	T5	96
600	10	T4	64	600	16	T4	64	600	25	T5	96
700	10	T4	64	700	16	T5	96	700	25	T6	199
800	10	T5	96	800	16	T5	96	800	25	T6	199
900	10	T5	96	900	16	T6	199	-	-	-	-
1000	10	T6	199	1000	16	T6	382	1000	25	T7	421
1200	10	T6	382	1200	16	T7	421	1200	25	T8	642
1400	10	T7	421	1400	16	T8	642	1400	25	T8	642

## PN 10 -Art.D147

## PN 16 -Art.D148

### VALVOLA CON CONTRAPPESO E CILINDRO IDRAULICO PN10/16

#### COMBINED CHECK-BUTTERFLY VALVE PN10/16



#### APPLICAZIONE:

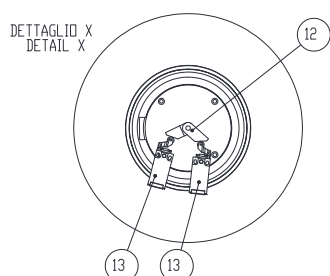
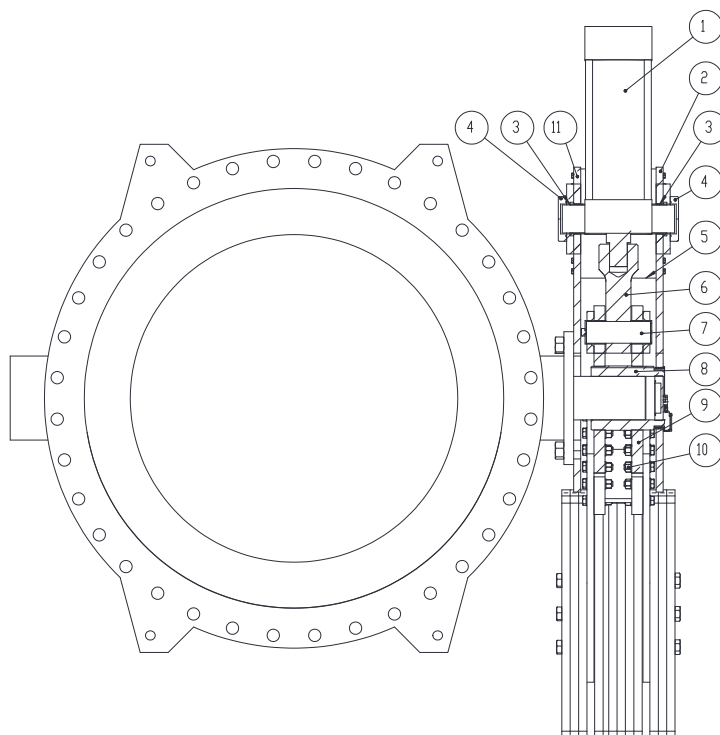
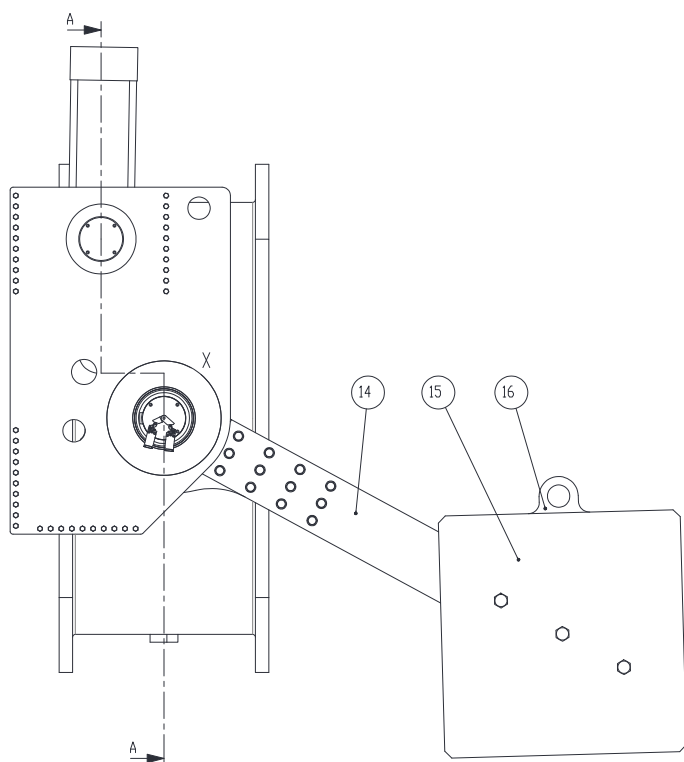
Stazioni di pompaggio, distribuzione acqua potabile, impianti di trattamento, bacini idrici, appl. industriali.

#### APPLICATION:

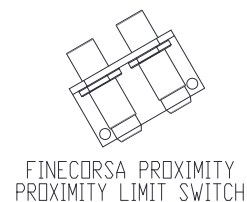
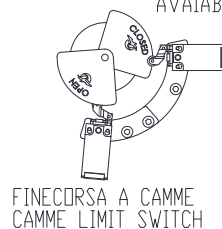
Pumping stations, drinkable water distribution, treatment plants, reservoirs, industrial applications.

**NORMA PROGETTO:** EN 593  
**SCARTAMENTO:** EN 558 Serie 14  
**FLANGE:** EN 1092-2  
**COLLAUDI:** EN 12266-1  
**TEMPERATURA ES:** Max. +70°C

**DESIGN STANDARD:** EN 593  
**FACE TO FACE:** EN 558 Serie 14  
**FLANGES:** EN 1092-2  
**TESTS:** EN 12266-1  
**WORKING TEMP:** Max. +70°C



DISPONIBILI A RICHIESTA  
AVAILABLE ON REQUEST



## PN 10 - Art.D147

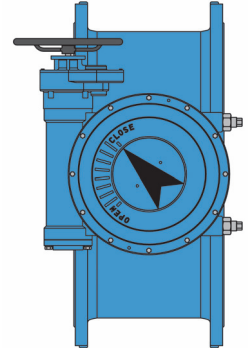
## PN 16-Art.D148

DENOMINAZIONE - PART	MATERIALI - MATERIALS
1 CILINDRO IDRAULICO - <i>HYDRAULIC CYLINDER</i>	/
2 PIASTRA ESTERNA - <i>EXTERNAL PLATE</i>	ACCIAIO S275JR (EN10025-2) - 275JR STEEL (EN10025-2)
3 BOCCOLA CILINDRO - <i>CYLINDER BUSH</i>	BRONZO CC333G (EN1982) - CC333G BRONZE (EN1982)
4 TAPPO CILINDRO - <i>CYLINDER CAP</i>	POLIETILENE - <i>POLYETHYLENE</i>
5 DISTANZIALE - <i>SPACER</i>	ACCIAIO S275JR (EN10025-2) - 275JR STEEL (EN10025-2)
6 FORCELLA - <i>FORK</i>	ACCIAIO S275JR (EN10025-2) / ACCIAIO INOX AISI420B 275JR STEEL (EN10025-2) / STAINLESSSTEEL AISI420B
7 SPINOTTO CILINDRO - <i>CYLINDER PIN</i>	ACCIAIO INOX AISI420B - STAINLESS STEEL AISI420B
8 MOZZO - <i>HUB</i>	ACCIAIO S275JR (EN10025-2) - 275JR STEEL (EN10025-2)
9 LEVA - <i>LEVER</i>	ACCIAIO S275JR (EN10025-2) - 275JR STEEL (EN10025-2)
10 VITI/DADI/ROSETTE - <i>SCREWS/NUTS/WASHERS</i>	ACCIAIO ZINCATO 8.8 - 8.8 GALVANIZED STEEL
11 PIASTRA INTERNA - <i>INTERNAL PLATE</i>	ACCIAIO S275JR (EN10025-2) - 275JR STEEL (EN10025-2)
12 LEVA FINE-CORSA - <i>LIMIT SWITCH LEVER</i>	OTTONE CW614N (EN12164) - BRASS CW614N (EN12164)
13 FINE-CORSA MECCANICO <i>MECHANICAL LIMIT SWITCH</i>	/
14 LEVA CONTRAPPESO - <i>COUNTERWEIGHT LEVER</i>	ACCIAIO S275JR (EN10025-2) - 275JR STEEL (EN10025-2)
15 CONTRAPPESO - <i>COUNTERWEIGHT</i>	ACCIAIO S275JR (EN10025-2) - 275JR STEEL (EN10025-2)
16 CONTRAPPESO CON ASOLA <i>COUNTERWEIGHT WITH LIFTING HOLE</i>	ACCIAIO S275JR (EN10025-2) - 275JR STEEL (EN10025-2)

**PN 10 - Art. D140**  
**PN 16 - Art. D141**  
**PN 25 - Art. D142**  
**PN 40 - Art. D149**

**VALVOLA A FARFALLA BIFLANGIATA DOPPIO ECCENTRICO PN10/16/25/40**

**DOUBLE FLANGED, DOUBLE ECCENTRIC, BUTTERFLY VALVE PN10/16/25/40**



**APPLICAZIONE:**

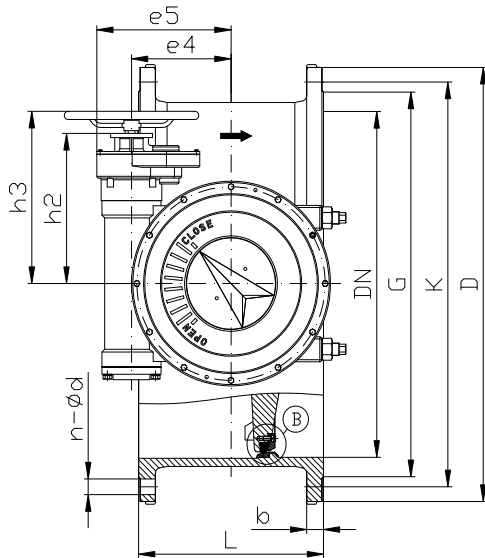
Stazioni di pompaggio, distribuzione acqua potabile, impianti di trattamento, bacini idrici, appl. industriali.

**APPLICATION:**

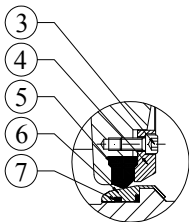
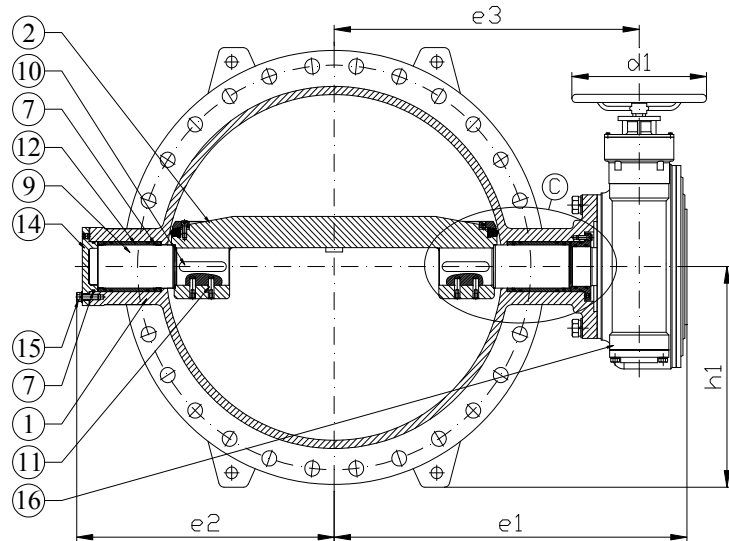
Pumping stations, drinkable water distribution, treatment plants, reservoirs, industrial applications.

<b>NORMA PROGETTO:</b>	EN 593, EN 1074-1 ed EN 1074-2	<b>DESIGN STANDARD:</b>	EN 593, EN 1074-1 and EN 1074-2
<b>SCARTAMENTO:</b>	EN 558 Serie 14	<b>FACE TO FACE:</b>	EN 558 Serie 14
<b>FLANGE:</b>	EN 1092-2	<b>FLANGES:</b>	EN 1092-2
<b>COLLAUDI:</b>	EN 12266-1	<b>TESTS:</b>	EN 12266-1
<b>TEMP. ESERCIZIO:</b>	Max. +70°C	<b>WORKING TEMP.:</b>	Max. +70°C

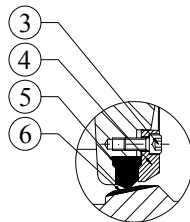
CLOSED POSITION



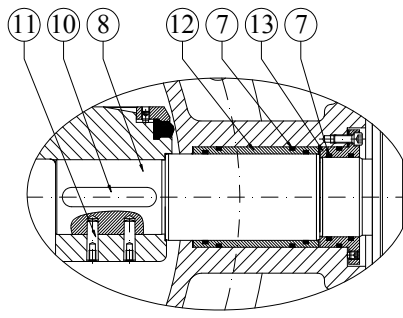
OPEN POSITION



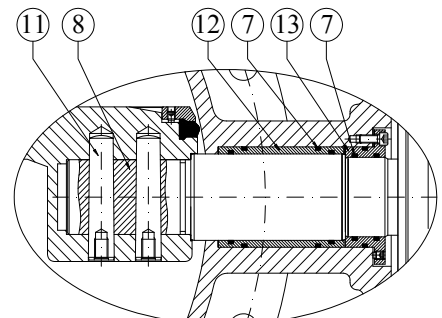
DETAIL B  
Pressed sealing ring  
DN150



DETAIL B  
Welded sealing ring  
from DN200



DETAIL C



DETAIL C  
[from DN2000 to  
DN2000 PN10/16]

**PN 10 - Art. D140**  
**PN 16 - Art. D141**  
**PN 25 - Art. D142**  
**PN 40- Art. D149**

	DENOMINAZIONE - PART	MATERIALI - MATERIALS
1	CORPO - BODY	GHISA SFER. EN-GJS 500-7 - DUCTILE IRON EN-GJS 500-7 (or EN-GJS400-15)
2	DISCO - DISC	GHISA SFER. EN-GJS 500-7 - DUCTILE IRON EN-GJS 500-7 (or EN-GJS400-15)
3	VITE - SCREW	ACCIAIO INOX A2 - STAINLESS STEEL A2
4	ANELLO PREMI GUARNIZIONE - RETAINING RING	ACCIAIO INOX AISI 304 (EN 1.4301) - STAINLESS STEEL AISI 304 (EN 1.4301)
5	ANELLO DI TENUTA SUL DISCO - DISC SEALING RING	EPDM - EPDM
6	ANELLO DI TENUTA SUL CORPO - BODY SEALING RING	ACCIAIO INOX AISI 304 (EN 1.4301) - STAINLESS STEEL AISI 304 (EN 1.4301)
7	O-RING - O-RING	EPDM - EPDM
8	ALBERO CONDUTTORE - SHAFT (DRIVEN END)	ACCIAIO INOX AISI 420 (EN 1.4021) - STAINLESS STEEL AISI 420 (EN 1.4021)
9	ALBERO GUIDA - SHAFT (FREE END)	ACCIAIO INOX AISI 420 (EN 1.4021) - STAINLESS STEEL AISI 420 (EN 1.4021)
10	CHIAVETTA - KEY	ACCIAIO INOX AISI 420 (EN 1.4021) - STAINLESS STEEL AISI 420 (EN 1.4021)
11	PERNO - PIN	ACCIAIO INOX AISI 420 (EN 1.4021) - STAINLESS STEEL AISI 420 (EN 1.4021)
12	BOCCOLA - SEAL BUSH	BRONZO/ALLUMINO - ALUMINIUM/BRONZE
13	BOCCOLA - SEAL BUSH	GHISA SFER. EN-GJS 500-7 - DUCTILE IRON EN-GJS 500-7 (or EN-GJS400-15)
14	COPERCHIO - COVER	GHISA SFER. EN-GJS 500-7 - DUCTILE IRON EN-GJS 500-7 (or EN-GJS400-15)
15	BULLONE - BOLT	ACCIAIO INOX A2 - STAINLESS STEEL A2
16	RIDUTTORE - GEAR BOX	GHISA GRIGIA EN-GJL250 - CAST IRON EN-GJL250

**RIVESTIMENTO ESTERNO/INTERNO:** Polvere epossidica di colore blu RAL 5015 con spessore 250µm.

**SURFACE PROTECTION:** FBE coating process with epoxy resin powder of blue colour RAL 5015 and thickness of 250µm.

	DN	G	K	D	n-ød	b	L	e1	e2	e3	e4	e5	ød1	h1	h2	h3	W(kg)
<b>PN10</b>	150	211	240	285	8-23	19	210	284	169	235	43	73	180	148	-	155	34
	200	266	295	340	8-23	20	230	328	198	272	64	99	240	175	137	193	54
	250	319	350	395	12-23	22	250	349	219	293	64	99	240	203	137	193	68
	300	370	400	445	12-23	24.5	270	416	254	351	94	135	320	228	178	233	103
	350	429	460	505	16-23	24.5	290	441	279	376	94	135	320	258	178	233	125
	400	480	515	565	16-28	24.5	310	514	320	432	120	169	400	288	192	283	178
	450	530	565	615	20-28	25.5	330	544	359	462	120	169	400	313	192	283	219
	500	582	620	670	20-28	26.5	350	595	393	513	120	186	240	340	317	378	263
	600	682	725	780	20-31	30	390	669	450	580	148	214	400	395	315	376	373
	700	794	840	895	24-31	32.5	430	687	530	598	148	214	400	453	315	376	502
	800	901	950	1015	24-34	35	470	796	614	691	185	265	400	513	346	407	729
	900	1001	1050	1115	28-34	37.5	510	855	675	750	185	265	400	563	346	407	924
	1000	1112	1160	1230	28-37	40	550	964	748	839	230	333	400	620	390	451	1493
	1200	1328	1380	1455	32-41	45	630	1106	865	981	230	368	400	733	451	512	2224
	1400	1530	1590	1675	36-44	46	710	1302	1011	1138	315	453	400	843	507	568	2935
	1500	1640	1700	1785	36-44	48	750	1377	1112	1213	315	453	400	898	507	568	-
1600	1750	1820	1915	40-50	49	790	1427	1161	1263	315	453	400	963	507	568	3785	
1800	1950	2020	2115	44-50	52	870	1714	1324	1501	412	613	400	1063	599	660	5356	
2000	2150	2230	2325	48-50	55	950	1819	1436	1606	412	613	400	1168	599	660	7168	

**PN 10 - Art. D140**  
**PN 16 -Art. D141**  
**PN 25 - Art. D142**  
**PN 40 - Art. D149**

	DN	G	K	D	n-ød	n-M	b	L	e1	e2	e3	e4	e5	ød1	h1	h2	h3	W(kg)
<b>PN16</b>	150	211	240	285	8-23	-	19	210	284	169	235	43	73	180	148	-	155	34
	200	266	295	340	12-23	-	20	230	328	198	272	64	99	240	175	137	193	54
	250	319	355	405	12-28	-	22	250	393	230	328	94	135	320	208	178	233	91
	300	370	410	460	12-28	-	24.5	270	416	254	351	94	135	320	235	178	233	111
	350	429	470	520	16-28	-	26.5	290	489	295	407	120	169	400	265	192	283	168
	400	480	525	580	16-31	-	28	310	519	334	437	120	169	400	295	192	283	216
	450	548	585	640	20-31	-	30	330	570	368	488	120	186	240	325	317	378	270
	500	609	650	715	20-34	-	31.5	350	619	400	530	148	214	400	363	315	376	349
	600	720	770	840	20-37	-	36	390	637	480	548	148	214	400	425	315	376	486
	700	794	840	910	24-37	-	39.5	430	745	563	640	185	265	400	460	346	407	674
	800	901	950	1025	24-41	-	43	470	803	623	698	185	265	400	518	346	407	904
	900	1001	1050	1125	28-41	-	46.5	510	914	698	789	230	333	400	568	390	451	1243
	1000	1112	1170	1255	28-44	-	50	550	1007	766	882	230	368	400	636	451	512	1580
	1200	1328	1390	1485	32-50	-	57	630	1201	911	1038	315	453	400	748	507	568	2569
	1400	1530	1590	1685	36-50	-	60	710	1466	1063	1253	412	613	400	848	599	660	4109
	1500	1640	1710	1820	36-57	-	62.5	750	1513	1120	1300	412	613	400	915	599	660	4420
	1600	1750	1820	1930	36-57	4-M52	65	790	1582	1172	1369	412	613	400	970	599	660	4905
1800	1950	2020	2130	36-57	8-M52	70	870	1841	1416	1602	495	725	600	1070	777	838	8200	
2000	2150	2230	2345	48-62	-	75	950	1940	1583	1701	495	725	600	1178	777	838	9172	

	DN	G	K	D	n-ød	n-M	b	L	e1	e2	e3	e4	e5	ød1	h1	h2	h3	W(kg)
<b>PN25</b>	150	211	250	300	8-28	-	20	210	284	169	235	64	99	240	148	137	193	50
	200	274	310	360	12-28	-	22	230	365	221	300	94	135	320	190	178	233	82
	250	330	370	425	12-31	-	24.5	250	402	254	337	94	135	320	220	178	233	120
	300	389	430	485	16-31	-	27.5	270	459	298	377	120	169	400	250	192	283	180
	350	448	490	555	16-34	-	30	290	512	318	430	120	186	400	285	317	378	205
	400	503	550	620	16-37	-	32	310	575	370	486	148	214	400	315	315	376	330
	450	548	600	670	20-37	-	34.5	330	585	406	496	148	214	400	340	315	376	400
	500	609	660	730	20-37	-	36.5	350	659	453	554	185	265	400	370	346	407	533
	600	720	770	845	20-41	-	42	390	740	495	631	185	265	400	428	346	407	687
	700	820	875	960	24-44	-	46.5	430	829	569	704	230	333	400	485	390	451	1070
	800	928	990	1085	24-50	-	51	470	925	646	800	230	333	400	548	390	451	1325
	900	1028	1090	1185	28-50	-	55.5	510	974	695	849	230	368	400	598	451	512	1985
	1000	1140	1210	1320	24-57	4-M52	60	550	1144	779	980	315	453	400	665	507	568	2440
	1200	1350	1420	1530	32-57	-	69	630	1349	903	1136	412	613	400	770	599	660	3802
1400	1560	1640	1755	36-62	-	74	710	1475	1041	1262	412	613	400	883	599	660	5250	
1500	1678	1750	1865	36-62	-	77.5	750	1521	1130	1308	412	613	400	938	599	660	-	
1600	1780	1860	1975	36-62	4-M56	81	790	1644	1208	1405	495	725	600	993	777	838	-	

	DN	G	K	D	n-ød	n-M	b	L	e1	e2	e3	e4	e5	ød1	h1	h2	h3	W(kg)
<b>PN40</b>	200	284	320	375	12-31	-	30	230	374	229	309	94	135	320	193	178	233	95
	250	345	385	450	8-34	4-M30	34.5	250	451	261	369	120	169	400	230	192	283	160
	300	409	450	515	12-34	4-M30	39.5	270	490	305	408	120	186	400	263	317	378	240
	350	465	510	580	12-37	4-M33	44	290	544	360	455	148	214	400	295	315	376	360
	400	535	585	660	12-41	4-M36	48	310	594	407	505	148	214	400	335	315	376	420
	450	560	610	685	16-41	4-M36	49	330	638	429	533	185	265	400	348	346	407	540
	500	615	670	755	16-44	4-M39	52	350	703	477	598	185	265	400	383	346	407	650
	600	735	795	890	16-50	4-M45	58	390	808	555	683	230	333	400	450	390	451	960
	700	840	900	995	20-48	4-M45	64	430	959	666	795	315	453	400	505	507	568	1580
	800	960	1030	1140	20-56	4-M52	72	470	1032	664	868	315	453	400	575	507	568	-
	900	1070	1140	1250	24-56	4-M52	76	510	1119	785	955	315	453	400	635	507	568	2300
	1000	1180	1250	1360	24-56	4-M52	80	550	1202	837	989	412	613	400	690	599	660	3140
	1100	1280	1350	1460	24-56	8-M52	85	590	1387	997	1174	412	613	400	735	599	660	-
	1200	1380	1460	1575	24-62	8-M56	88	630	1518	1077	1279	495	725	600	793	777	838	-
1400	1600	1680	1795	28-62	8-M56	98	710	1639	1200	1400	495	725	600	903	777	838	-	
1500	1715	1800	1925	28-70	8-M64	105	750	1736	1305	1497	495	725	600	968	777	838	-	

**PN 10 Art.D140 RL**  
**PN 16 - Art. D141 RL**  
**PN 25 - Art. D142 RL**

**VALVOLA A FARFALLA BIFLANGIATA DOPPIO ECCENTRICO PN10/16/25 - GOMMATA**

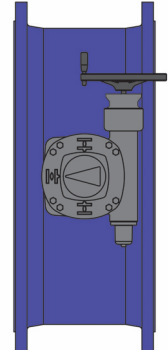
**DOUBLE FLANGED, DOUBLE ECCENTRIC, BUTTERFLY VALVE PN10/16/25 - HARD RUBBER LINED**

**APPLICAZIONE:**

Stazioni di pompaggio, distribuzione acqua potabile, impianti di trattamento, bacini idrici, appl. industriali.

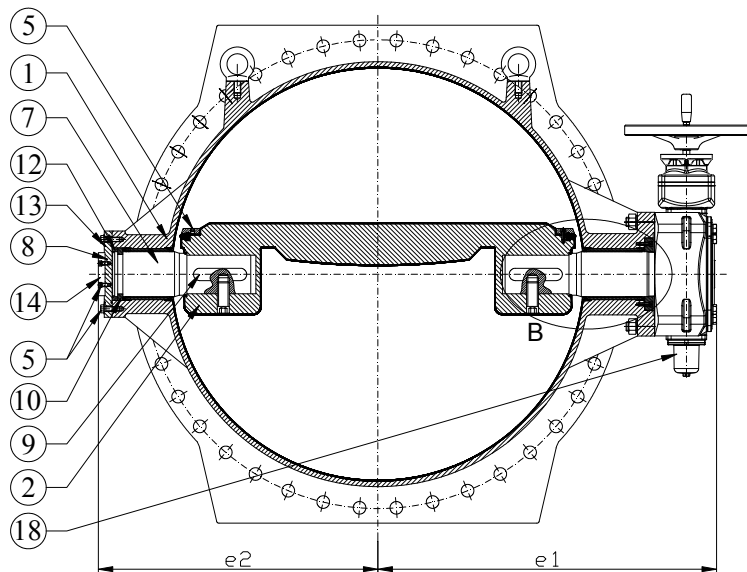
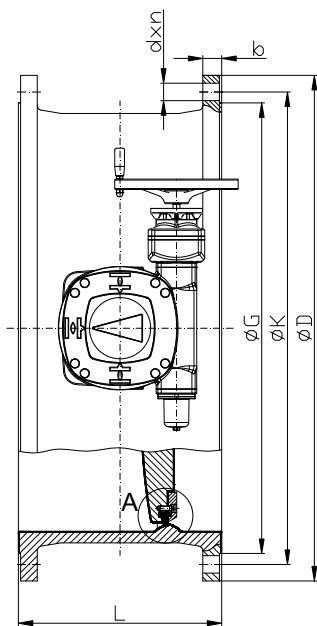
**APPLICATION:**

Pumping stations, drinkable water distribution, treatment plants, reservoirs, industrial applications.



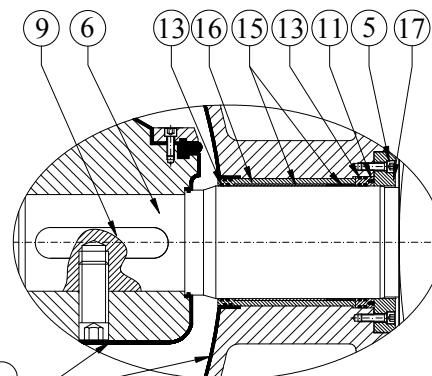
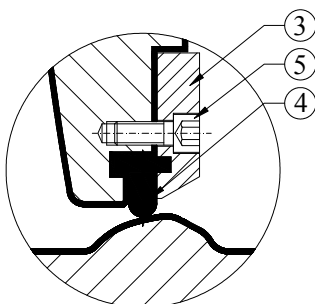
**NORMA PROGETTO:** EN 593, EN 1074-1 ed EN 1074-2  
**SCARTAMENTO:** EN 558 Serie 14  
**FLANGE:** EN 1092-2  
**COLLAUDI:** EN 12266-1  
**TEMP. ESERCIZIO:** Max. +70°C

**DESIGN STANDARD:** EN 593, EN 1074-1 and EN 1074-2  
**FACE TO FACE:** EN 558 Series 14  
**FLANGES:** EN 1092-2  
**TESTS:** EN 12266-1  
**WORKING TEMP.:** Max. +70°C



DETAIL-B

DETAIL-A



HARD RUBBER LINING



## PN 10 - Art. D140RL

## PN 16 - Art. D141RL

## PN 25 - Art. D142 RL

DENOMINAZIONE - PART		MATERIALI - MATERIALS
1	CORPO - BODY	GHISA SFEROIDALE EN-GJS400-15 GOMMATO INTERNAMENTE DUCTILE IRON EN-GJS400-15 INSIDE HARD RUBBERLINED
2	DISCO - DISC	GHISA SFEROIDALE EN-GJS400-15 GOMMATO INTERNAMENTE DUCTILE IRON EN-GJS400-15 INSIDE HARD RUBBERLINED
3	ANELLO PREMI GUARNIZIONE - RETAINING RING	ACCIAIO INOX AISI 316 - SS AISI 316 (or DUPLEX 1.4462)
4	ANELLO DI TENUTA - SEALING RING	EPDM - EPDM
5	VITE - SCREW	ACCIAIO INOX A4 - STAINLESS STEEL A4
6	ALBERO CONDUTTORE - SHAFT (DRIVEN END)	DUPLEX (EN 1.4462)- DUPLEX (EN 1.4462)
7	ALBERO GUIDA - SHAFT (FREE END)	DUPLEX (EN 1.4462)- DUPLEX (EN 1.4462)
8	COPERCHIO - COVER	GHISA SFEROIDALE EN-GJS400-15 - DUCTILE IRON EN-GJS400-15
9	CHIAVETTA - KEY	DUPLEX (EN 1.4462)- DUPLEX (EN 1.4462)
10	BOCCOLA - AXIAL BEARING	BRONZO - BRONZE
11	BOCCOLA DI TENUTA - STUFFING BOX	BRONZO - BRONZE
12	DISTANZIALE - SPACER RING	BRONZO - BRONZE
13	O-RING - O-RING	EPDM - EPDM
14	CHIAVETTA - KEY	DUPLEX (EN 1.4462)- DUPLEX (EN 1.4462)
15	BOCCOLA - RADIAL BEARING	PTFE RINFORZATO - PTFE REINFORCED
16	BOCCOLA - BEARING BUSH	BRONZO - BRONZE
17	COPERCHIO - COVER	GHISA SFEROIDALE EN-GJS400-15 - DUCTILE IRON EN-GJS400-15
18	RIDUTTORE - GEAR BOX	GHISA SFEROIDALE EN-GJS400-15 - DUCTILE IRON EN-GJS400-15

**RIVESTIMENTI:** Esterno in vernice epossidica di colore blu RAL 5015 con spessore 300 $\mu$ m; Interno in gomma per la protezione alla corrosione.

**SURFACES PROTECTION:** Outside epoxy coating of blue colour RAL 5015 and thickness of 300 $\mu$ m. Inside hard rubber lined for corrosion protection.

DN	G			K			D			n- $\phi$ d			b			L	e1	e2
	PN10	PN16	PN25	PN10	PN16	PN25	PN10	PN16	PN25	PN10	PN16	PN25	PN10	PN16	PN25			
200	266	266	274	295	295	310	340	340	360	8-23	12-23	12-28	20	20	22	230	415	210
250	319	319	330	350	355	370	395	405	425	12-23	12-28	12-31	22	22	24.5	250	485	240
300	370	370	389	400	410	430	445	460	485	12-23	12-28	16-31	24.5	24.5	27.5	270	600	291
350	429	429	448	460	470	490	505	520	555	16-23	16-28	16-34	24.5	26.5	30	290	625	320
400	480	480	503	515	525	550	565	580	620	16-28	16-31	16-37	24.5	28	32	310	650	345
450	530	548	548	565	585	600	615	640	670	20-28	20-31	20-37	25.5	30	34.5	330	660	375
500	582	609	609	620	650	660	670	715	730	20-28	20-34	20-37	26.5	31.5	36.5	350	780	445
600	682	720	720	725	770	770	780	840	845	20-31	20-37	20-41	30	36	42	390	845	515
700	794	794	820	840	840	875	895	910	960	24-31	24-37	24-44	32.5	39.5	46.5	430	907	525
800	901	901	928	950	950	990	1015	1025	1085	24-34	24-41	24-50	35	43	51	470	1037	655
900	1001	1001	1028	1050	1050	1090	1115	1125	1185	28-34	28-41	28-50	37.5	46.5	55.5	510	1087	710
1000	1112	1112	1140	1160	1170	1210	1230	1255	1320	28-37	28-44	28-57	40	50	60	550	1152	760
1100	1218	1218	1240	1270	1270	1310	1340	1355	1420	32-37	32-44	32-57	42.5	53.5	64.5	590	1200	710
1200	1328	1328	1350	1380	1390	1420	1455	1485	1530	32-41	32-50	32-57	45	57	69	630	1242	855
1400	1530	1530	1560	1590	1590	1640	1675	1685	1755	36-44	36-50	36-62	46	60	74	710	1352	975
1500	1640	1640	1678	1700	1710	1750	1785	1820	1865	36-44	36-57	36-62	47.5	62.5	77.5	750	1480	1100