

PN 10 - Art. E050

PN 16 - Art. E051

SFIATO SINGOLO GALLEGGIANTE PN10/16

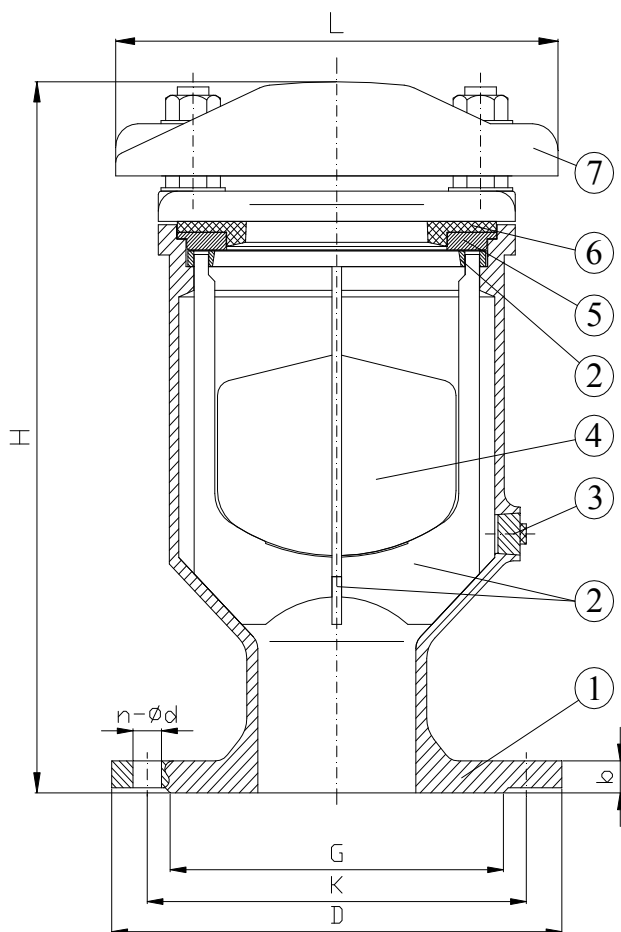
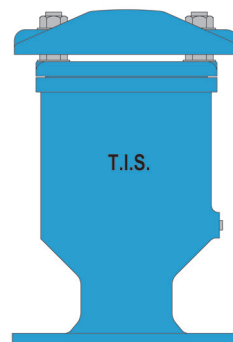
AIR RELEASE VALVE SINGLE CHAMBER PN10/16

APPLICAZIONE:

Impiego su rete di distribuzione, sistemi di irrigazione.

APPLICATION:

Water works and irrigation systems.



NORMA PROGETTO: EN 1074-4
FLANGE: EN 1092-2
COLLAUDI: EN 12266-1
PRESSIONE ESERCIZIO: Min. 0,2 bar
TEMP. ESERCIZIO: Max. +70°C

DESIGN STANDARD: EN 1074-4
FLANGES: EN 1092-2
TESTS: EN 12266-1
WORKING PRESSURE: Min. 0,2 bar
WORKING TEMP.: Max. +70°C

DENOMINAZIONE PART	MATERIALI MATERIALS
1 CORPO BODY	EN-GJS 500-7 EN-GJS 500-7
2 GUIDA CAGE	ABS ABS
3 TAPPO SCREW PLUG	ACC. INOX AISI 304 (EN 1.4301) SS AISI 304 (EN 1.4301)
4 GALLEGGIANTE FLOAT	ABS ABS
5 GUARNIZIONE GASKET	EPDM EPDM
6 FLANGIA SUPER. LITTLE FLANGE	ABS ABS
7 COPERCHIO BONNET	EN-GJS 500-7 EN-GJS 500-7

RIVESTIMENTO ESTERNO/INTERNO: Polvere epossidica di colore blu RAL 5015 con spessore 250µm.

SURFACE PROTECTION: FBE coating process with epoxy resin powder of blue colour RAL 5015 and thickness of 250µm.

DN	G	K	D	n-ød	b	L	H	W (kg)
40	84	110	150	4-19	19	145	255	15.0
50	99	125	165	4-19	19	145	255	16.0
65	118	145	185	4-19	19	145	255	18.5
80	132	160	200	8-19	19	206	329	19.0
100	156	180	220	8-19	19	206	329	31.5
125	184	210	250	8-19	19	280	410	34.0
150	211	240	285	8-23	19	280	410	35.5

PN 25 - Art. E063

PN 40 - Art.

E064

SFIATO DOPPIO GALLEGGIANTE PN25 / PN40

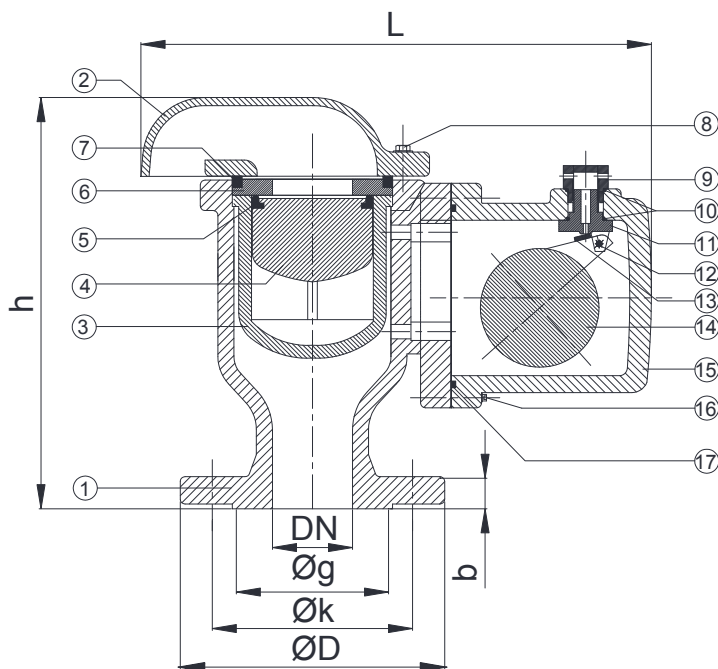
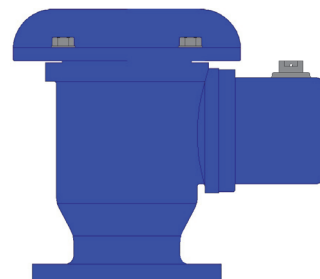
AIR RELEASE VALVE DOUBLE CHAMBER PN25 / PN40

APPLICAZIONE:

Impiego su rete di distribuzione, sistemi di irrigazione.

APPLICATION:

Water works and irrigation systems.



	DENOMINAZIONE PART	MATERIALI MATERIALS
1	CORPO BODY	EN - GJS 400 - 15 EN - GJS 400 - 15
2/15	COPERCHIO COVER	EN - GJS 400 - 15 EN - GJS 400 - 15
3	GABBIA CAGE	POLIAMIDE 6 POLYAMID 6
4/14	GALLEGGIANTE FLOATER	POLIPROPILENE FOAMED POLYPROPYLENE
5/7 10/17	O-RING O-RING	EPDM EPDM
6	DISCO DISC	OTTONE BRASS
8	VITE E RONDELLA SCREW & WASHER	ACCIAIO 8.8 STEEL 8.8
9/11	DEGASATORE ORIFICE COVER	ACC. INOX AISI 304 S. STEEL AISI 304
12	PIN PIN	ACC. INOX AISI 304 S. STEEL AISI 304
13	TENUTA SEALING FACE	EPDM EPDM
16	VITE SCREW	ACCIAIO 8.8 STEEL 8.8

ART.	E063								E064							
	50	65	80	100	125	150	200	250	50	65	80	100	125	150	200	250
DN	50	65	80	100	125	150	200	250	50	65	80	100	125	150	200	250
L	180	180	180	265	265	265	345	580	180	180	180	265	265	265	345	580
h	260	260	260	320	320	320	450	810	260	260	260	320	320	320	450	810
Weight (kg)	17.0	21.0	22.0	34.0	34.5	36.5	67.0	185	17.0	21.0	22.0	34.0	34.5	36.5	71.0	190
ØD	165	185	200	235	270	300	360	425	165	185	200	235	270	300	375	450
Øk	125	145	160	190	220	250	310	370	125	145	160	190	220	250	320	385
Øg	99	118	132	156	184	211	274	330	99	118	132	156	184	211	284	345
n x ød	4x19	8x19	8x19	8x23	8x28	8x28	12x28	12x31	4x19	8x19	8x19	8x23	8x28	8x28	12x31	12x34
b	19	19	19	19	19	20	22	24.5	19	19	19	19	23.5	26	30	34.5
Viti / Bolt	M16	M16	M16	M20	M24	M24	M24	M27	M16	M16	M16	M20	M24	M24	M27	M30

RIVESTIMENTO ESTERNO/INTERNO: Polvere epossidica di colore BLU RAL 5005 con spessore 250µm.

SURFACE PROTECTION: FBE coating process with epoxy resin powder of sky blue colour RAL 5005 and thickness of 250µm.

PN 25 - Art. E053

PN 40 - Art. E054

SFIATO SINGOLO GALLEGGIANTE PN25 / PN40

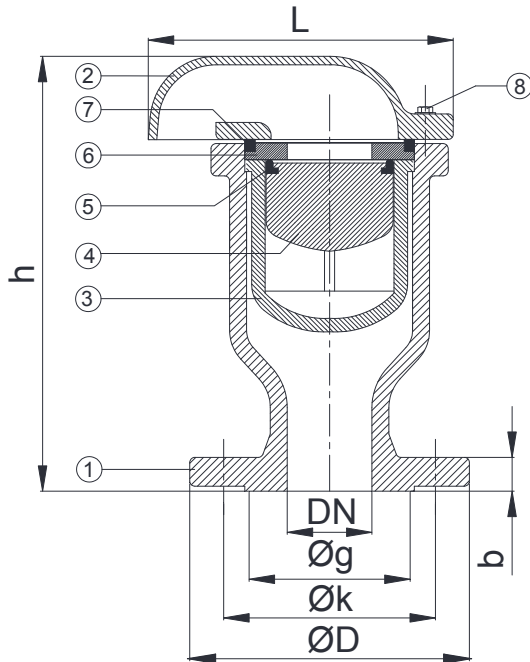
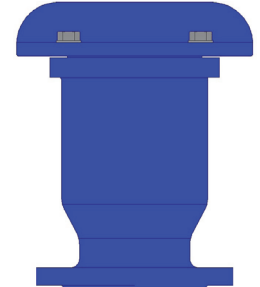
AIR RELEASE VALVE SINGLE CHAMBER PN25 / PN40

APPLICAZIONE:

Impiego su rete di distribuzione, sistemi di irrigazione.

APPLICATION:

Water works and irrigation systems.



	DENOMINAZIONE PART	MATERIALI MATERIALS
1	CORPO BODY	EN - GJS 400 - 15 EN - GJS 400 - 15
2	COPERCHIO COVER	EN - GJS 400 - 15 EN - GJS 400 - 15
3	GABBIA CAGE	POLIAMIDE 6 POLYAMID 6
4	GALLEGGIANTE FLOATER	POLIPROPILENE FOAMED POLYPROPYLENE
5	O-RING O-RING	EPDM EPDM
6	DISCO DISC	OTTONE BRASS
7	O-RING O-RING	EPDM EPDM
8	VITE E RONDELLA SCREW & WASHER	ACCIAIO 8.8 STEEL 8.8

ART.	E053							E054						
	50	65	80	100	125	150	200	50	65	80	100	125	150	200
DN	50	65	80	100	125	150	200	50	65	80	100	125	150	200
L	325	325	325	370	370	370	370	325	325	325	370	370	370	370
h	260	260	260	320	320	320	450	260	260	260	320	320	320	450
Weight (kg)	17.0	21.0	22.0	34.0	34.5	36.5	67.0	17.0	21.0	22.0	34.0	34.5	36.5	71.0
ØD	165	185	200	235	270	300	360	165	185	200	235	270	300	375
Øk	125	145	160	190	220	250	310	125	145	160	190	220	250	320
Øg	99	118	132	156	184	211	274	99	118	132	156	184	211	284
n x ød	4X19	8X19	8X19	8X23	8X28	8X28	12X28	4X19	8X19	8X19	8X23	8X28	8X28	12X31
b	19	19	19	19	19	20	22	19	19	19	19	23.5	26	30
Viti / Bolt	M16	M16	M16	M20	M24	M24	M24	M16	M16	M16	M20	M24	M24	M27

RIVESTIMENTO ESTERNO/INTERNO: Polvere epossidica di colore BLU RAL 5005 con spessore min. 250µm.

SURFACE PROTECTION: FBE coating process with epoxy resin powder of sky blue colour RAL 5005 and minimum thickness of 250µm.

PN 10 - Art. E060

PN 16 - Art. E061

SFIATO DOPPIO GALLEGGIANTE PN10/16

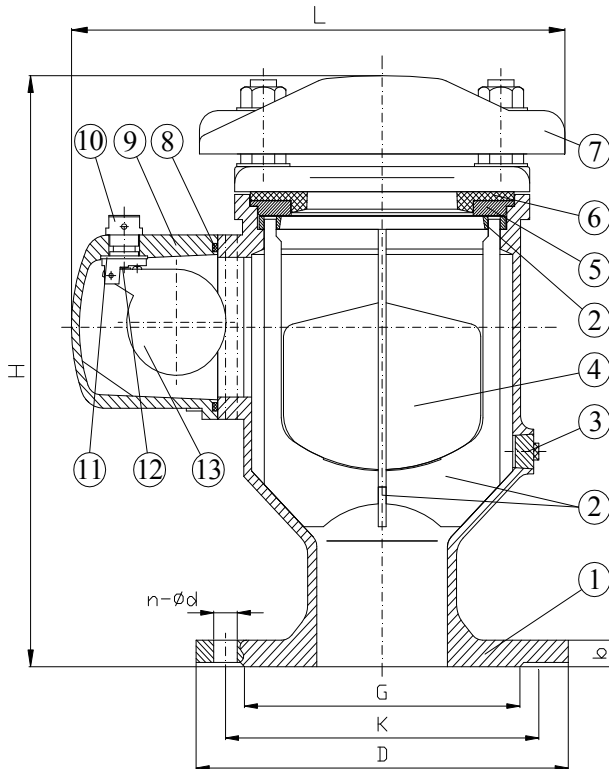
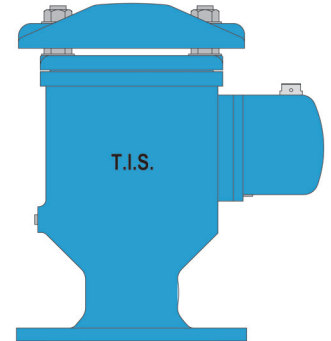
AIR RELEASE VALVE DOUBLE CHAMBER PN10/16

APPLICAZIONE:

Impiego su rete di distribuzione, sistemi di irrigazione.

APPLICATION:

Water works and irrigation systems.



NORMA PROGETTO: EN 1074-4
FLANGE: EN 1092-2
COLLAUDI: EN 12266-1
PRESSIONE ESERCIZIO: Min. 0,3 bar
TEMP. ESERCIZIO: Max. +70°C

DESIGN STANDARD: EN 1074-4
FLANGES: EN 1092-2
TESTS: EN 12266-1
WORKING PRESSURE: Min. 0,3 bar
WORKING TEMP.: Max. +70°C

DENOMINAZIONE PART	MATERIALI MATERIALS
1 CORPO BODY	EN-GJS 500-7 EN-GJS 500-7
2 GUIDA CAGE	ABS ABS
3 TAPPO SCREW PLUG	ACC. INOX AISI 304 (EN 1.4301) SS AISI 304 (EN 1.4301)
4 GALLEGGIANTE FLOAT	ABS ABS
5 GUARNIZIONE GASKET	EPDM EPDM
6 FLANGIA SUPERIORE LITTLE FLANGE	ABS ABS
7 COPERCHIO BONNET	EN-GJS 500-7 EN-GJS 500-7
8 O-RING O-RING	NBR NBR
9 CORPO CORPO	EN-GJS 500-7 EN-GJS 500-7
10 DEGASATORE ORIFICE COVER	PA PA
11 GUARNIZIONE GASKET	EPDM EPDM
12 TENUTA SEALING FACE	EPDM EPDM
13 GALLEGGIANTE FLOAT	ABS ABS

RIVESTIMENTO ESTERNO/INTERNO: Polvere epossidica di colore blu RAL 5015 con spessore 250µm.

SURFACE PROTECTION: FBE coating process with epoxy resin powder of blue colour RAL 5015 and thickness of 250µm.

DN	G	K	D	n-ød	b	L	H	W (kg)
40	84	110	150	4-19	19	340	330	18.5
50	99	125	165	4-19	19	340	330	19.0
65	118	145	185	4-19	19	340	330	21.5
80	132	160	200	8-19	19	340	330	22.0
100	156	180	220	8-19	19	380	410	34.5
125	184	210	250	8-19	19	380	410	36.5
150	211	240	285	8-23	19	380	410	38.5