

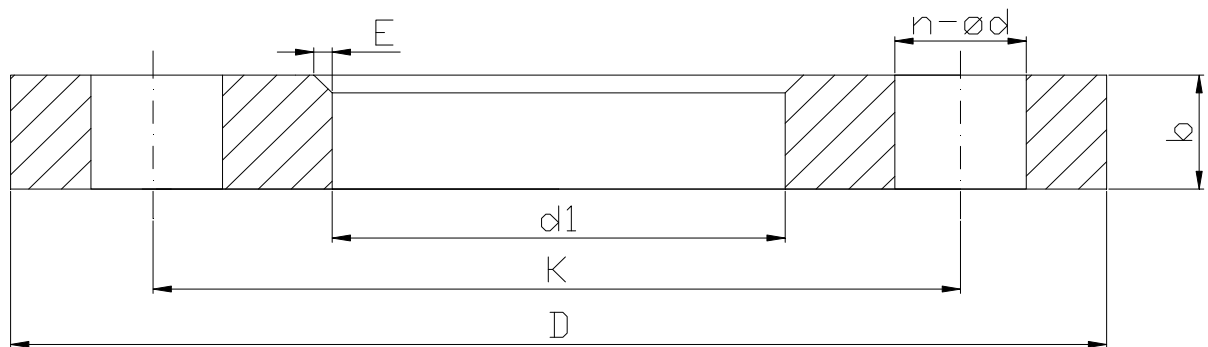
Art. 038014

FLANGIA PER CARTELLA PE - PN10

FLANGE FOR PE FLANGE ADAPTOR - PN10

DIMENSIONI: EN 1092-1
MATERIALI: Acciaio al carbonio

DIMENSIONS: EN 1092-1
MATERIALS: Carbon steel



TUBO PE PE PIPE [DN]	DN	d1	K	D	n - ød	b	VITE SCREW	E	PESO WEIGHT [Kg]
20	15								
25	20								
32	25								
40	32								
50	40								
63	50								
75	65								
90	80								
110	100								
125	100								
140	125								
160	150								
180	150								
200	200	235	295	340	8 - 22	24	M20	4	10,0
225	200	238	295	340	8 - 22	24	M20	4	10,0
250	250	288	350	395	12 - 22	26	M20	6	11,5
280	250	294	350	395	12 - 22	26	M20	6	11,5
315	300	338	400	445	12 - 22	26	M20	6	13,0
355	350	376	460	505	16 - 22	30	M20	6	17,5
400	400	430	515	565	16 - 26	32	M24	6	20,5

Utilizzare le dimensioni PN16

Use PN16 dimensions

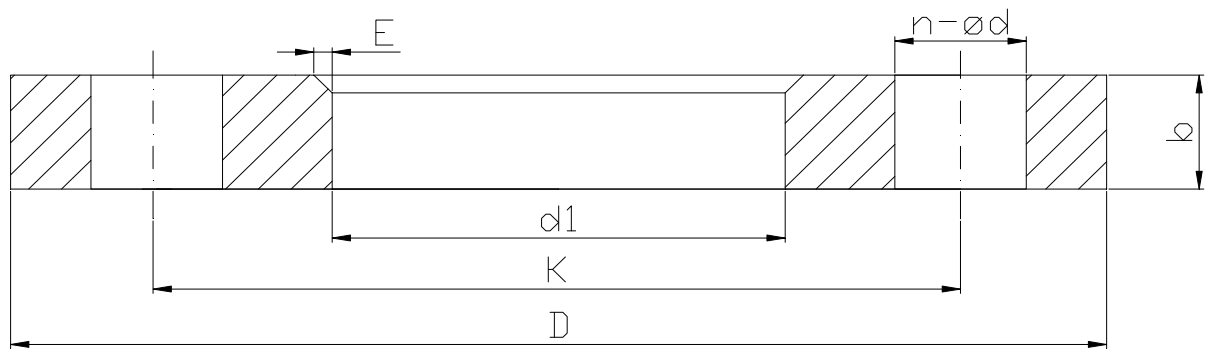
Art. 048038

FLANGIA PER CARTELLA PE - PN16

FLANGE FOR PE FLANGE ADAPTOR - PN16

DIMENSIONI: EN 1092-1
MATERIALI: Acciaio al carbonio

DIMENSIONS: EN 1092-1
MATERIALS: Carbon steel



TUBO PE PE PIPE [DN]	DN	d1	K	D	n - ød	b	VITE SCREW	E	PESO WEIGHT [kg]
20	15	28	65	95	4 -14	14	M12	1	0,5
25	20	34	75	105	4 -14	16	M12	2	1,0
32	25	42	85	115	4 -14	16	M12	2	1,0
40	32	51	100	140	4 -18	18	M16	3	2,0
50	40	62	110	150	4 -18	18	M16	3	2,0
63	50	78	125	165	4 -18	20	M16	3	2,5
75	65	92	145	185	8 -18	20	M16	4	3,5
90	80	108	160	200	8 -18	20	M16	4	4,0
110	100	128	180	220	8 -18	22	M16	4	6,0
125	100	135	180	220	8 -18	22	M16	4	6,0
140	125	158	210	250	8 -18	22	M16	4	8,0
160	150	178	240	285	8 -22	24	M20	4	10,0
180	150	188	240	285	8 -22	24	M20	4	10,0
200	200	235	295	340	12 -22	26	M20	4	11,0
225	200	238	295	340	12 -22	26	M20	4	11,0
250	250	288	355	405	12 -26	29	M24	6	12,0
280	250	294	355	405	12 -26	29	M24	6	12,0
315	300	338	410	460	12 -26	32	M24	6	17,0
355	350	376	470	520	16 -26	35	M24	6	22,5
400	400	430	525	580	16 -30	38	M27	6	28,5