

RACCORDERIA IN POLIETILENE

PE FITTINGS

Art. 038002

GOMITO A 90° CODOLO LUNGO, PE 100

ELBOW 90° LONG SPIGOT, PE 100

APPLICAZIONE:

Impianti di acquedottistica, di convogliamento gas combustibili, di fognature civili ed industriali, di irrigazione etc...

APPLICATION:

Water pipeline systems, for gas, civil and industrial sewerage, irrigation etc...

NORME PRODOTTO:

UNI EN ISO 15494
UNI EN 1555-3
UNI EN 12201-3

PRODUCT STANDARDS:

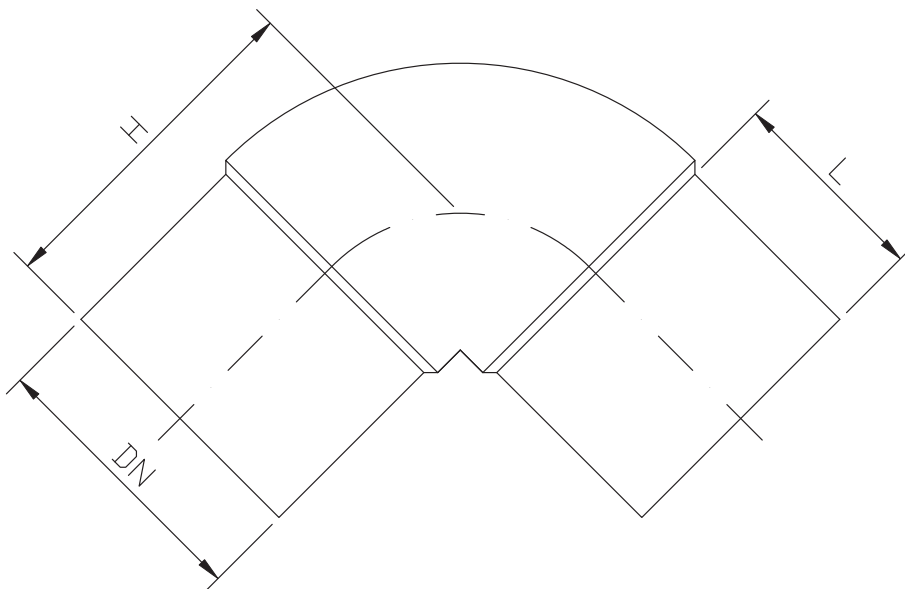
UNI EN ISO 15494
UNI EN 1555-3
UNI EN 12201-3

TEMPERATURA DI ESERCIZIO: da -40 a + 60°C

WORKING TEMPERATURE: from -40 to + 60°C

PRESSIONE DI ESERCIZIO MAX: Acqua 16 bar
Gas 10 bar

MAX WORKING PRESSURE: Water 16 bar
Gas 10 bar



| | | | | | | | | | | | | | | | | | |
|----|----|----|----|----|-----|-----|-----|-----|-----|-----|-----|-----|-----|-----|-----|-----|-----|
| DN | 25 | 32 | 40 | 50 | 63 | 75 | 90 | 110 | 125 | 140 | 160 | 180 | 200 | 225 | 250 | 280 | 315 |
| L | 47 | 50 | 56 | 57 | 68 | 70 | 82 | 91 | 91 | 97 | 104 | 106 | 117 | 119 | 130 | 126 | 151 |
| H | 70 | 70 | 85 | 90 | 114 | 103 | 155 | 163 | 183 | 192 | 207 | 226 | 245 | 275 | 308 | 326 | 355 |

RACCORDERIA IN POLIETILENE
PE FITTINGS

Art. 038004

GOMITO A 45° CODOLO LUNGO, PE 100

ELBOW 45° LONG SPIGOT, PE 100

APPLICAZIONE:

Impianti di acquedottistica, di convogliamento gas combustibili, di fognature civili ed industriali, di irrigazione etc...

APPLICATION:

Water pipeline systems, for gas, civil and industrial sewerage, irrigation etc...

NORME PRODOTTO:

UNI EN ISO 15494
UNI EN 1555-3
UNI EN 12201-3

PRODUCT STANDARDS:

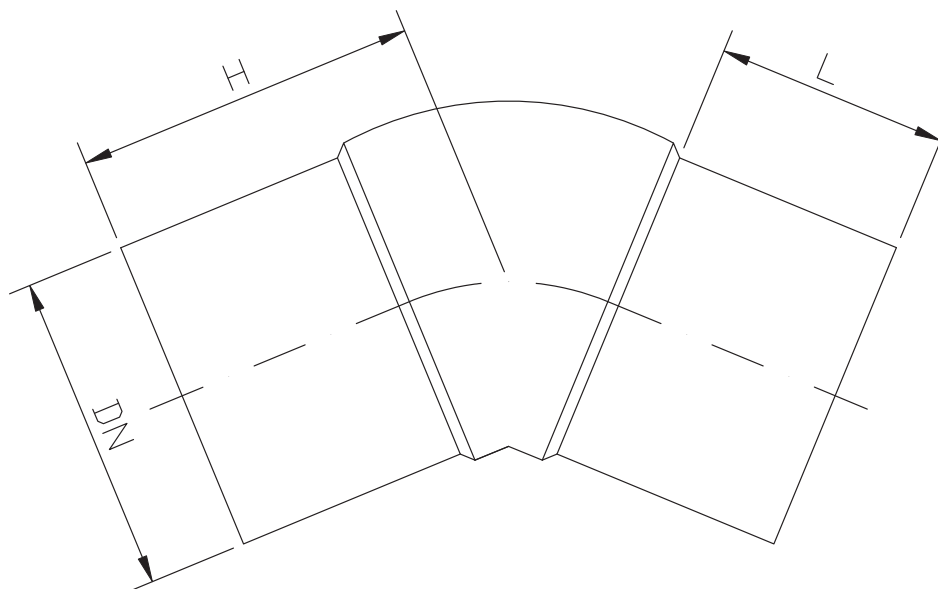
UNI EN ISO 15494
UNI EN 1555-3
UNI EN 12201-3

TEMPERATURA DI ESERCIZIO: da -40 a + 60°C

WORKING TEMPERATURE: from -40 to + 60°C

PRESSIONE DI ESERCIZIO MAX: Acqua 16 bar
Gas 10 bar

MAX WORKING PRESSURE: Water 16 bar
Gas 10 bar



| DN | 32 | 40 | 50 | 63 | 75 | 90 | 110 | 125 | 140 | 160 | 180 | 200 | 225 | 250 | 280 | 315 |
|----|----|----|----|----|-----|-----|-----|-----|-----|-----|-----|-----|-----|-----|-----|-----|
| L | 50 | 57 | 58 | 69 | 73 | 84 | 94 | 93 | 98 | 107 | 108 | 120 | 120 | 133 | 140 | 152 |
| H | 70 | 75 | 85 | 91 | 100 | 108 | 129 | 157 | 170 | 175 | 173 | 185 | 195 | 215 | 246 | 265 |

RACCORDERIA IN POLIETILENE

PE FITTINGS

Art. 038006

TI 90° CODOLO LUNGO, PE 100

TEE 90° LONG SPIGOT, PE 100

APPLICAZIONE:

Impianti di acquedottistica, di convogliamento gas combustibili, di fognature civili ed industriali, di irrigazione etc...

APPLICATION:

Water pipeline systems, for gas, civil and industrial sewerage, irrigation etc...

NORME PRODOTTO:

UNI EN ISO 15494
UNI EN 1555-3
UNI EN 12201-3

PRODUCT STANDARDS:

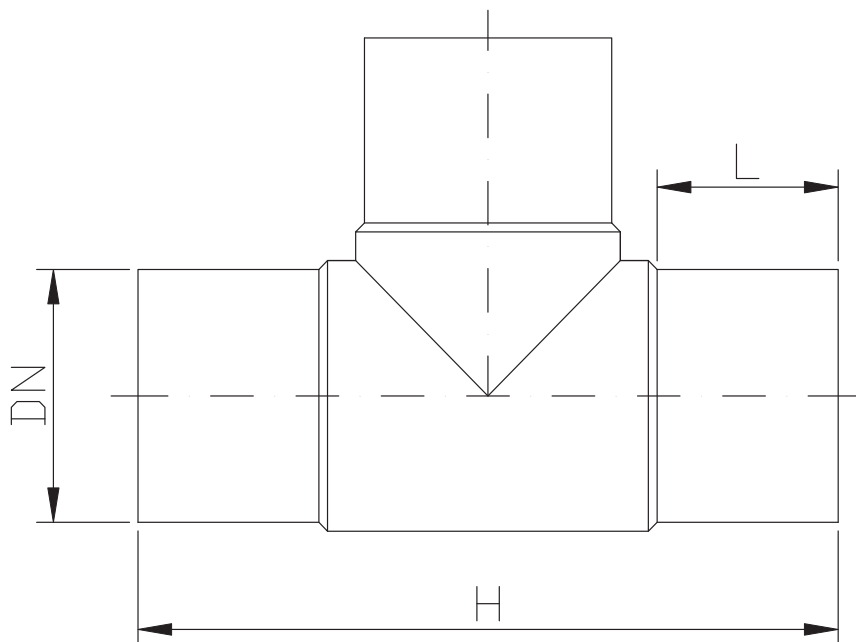
UNI EN ISO 15494
UNI EN 1555-3
UNI EN 12201-3

TEMPERATURA DI ESERCIZIO: da -40 a + 60°C

WORKING TEMPERATURE: from -40 to + 60°C

PRESSIONE DI ESERCIZIO MAX:Acqua 16 bar
Gas 10 bar

MAX WORKING PRESSURE: Water 16 bar
Gas 10 bar



| DN | 25 | 32 | 40 | 50 | 63 | 75 | 90 | 110 | 125 | 140 | 160 | 180 | 200 | 225 | 250 | 280 | 315 |
|----|-----|-----|-----|-----|-----|-----|-----|-----|-----|-----|-----|-----|-----|-----|-----|-----|-----|
| L | 45 | 50 | 55 | 55 | 68 | 73 | 82 | 92 | 90 | 96 | 104 | 107 | 115 | 120 | 132 | 140 | 152 |
| H | 139 | 145 | 171 | 179 | 232 | 260 | 303 | 338 | 357 | 390 | 427 | 450 | 500 | 540 | 610 | 680 | 707 |

Art. 038008

RIDUZIONE A CODOLO LUNGO, PE 100

REDUCER LONG SPIGOT, PE 100

APPLICAZIONE:

Impianti di acquedottistica, di convogliamento gas combustibili, di fognature civili ed industriali, di irrigazione etc...

APPLICATION:

Water pipeline systems, for gas, civil and industrial sewerage, irrigation etc...

NORME PRODOTTO:

UNI EN ISO 15494
UNI EN 1555-3
UNI EN 12201-3

PRODUCT STANDARDS:

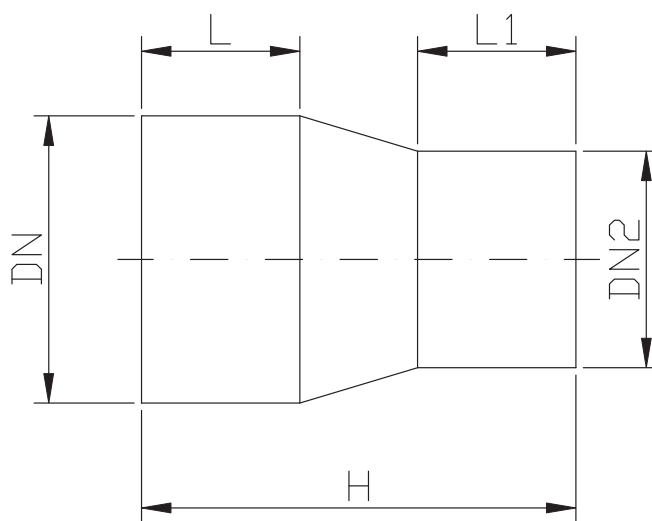
UNI EN ISO 15494
UNI EN 1555-3
UNI EN 12201-3

TEMPERATURA DI ESERCIZIO: da -40 a + 60°C

WORKING TEMPERATURE: from -40 to + 60°C

PRESSIONE DI ESERCIZIO MAX:Acqua 16 bar
Gas 10 bar

MAX WORKING PRESSURE: Water 16 bar
Gas 10 bar



| | | | | | | | | | | | | | | | | | | | | | | | |
|-----|----|-----|-----|-----|-----|-----|-----|-----|-----|-----|-----|-----|-----|-----|-----|-----|-----|-----|-----|-----|-----|-----|-----|
| DN | 32 | 40 | 40 | 50 | 50 | 50 | 63 | 63 | 63 | 63 | 75 | 75 | 75 | 75 | 90 | 90 | 90 | 110 | 110 | 110 | 110 | 125 | 125 |
| DN2 | 25 | 25 | 32 | 25 | 32 | 40 | 25 | 32 | 40 | 50 | 32 | 40 | 50 | 63 | 50 | 63 | 75 | 50 | 63 | 75 | 90 | 63 | 75 |
| L | 43 | 50 | 55 | 56 | 56 | 54 | 66 | 66 | 65 | 65 | 74 | 74 | 74 | 74 | 83 | 83 | 83 | 91 | 91 | 91 | 91 | 91 | 91 |
| L1 | 42 | 42 | 50 | 43 | 48 | 50 | 44 | 49 | 53 | 55 | 49 | 50 | 56 | 65 | 53 | 68 | 74 | 56 | 66 | 73 | 79 | 68 | 72 |
| H | 91 | 100 | 111 | 113 | 115 | 109 | 133 | 133 | 131 | 127 | 146 | 142 | 142 | 144 | 157 | 163 | 165 | 177 | 181 | 180 | 194 | 191 | 188 |

| | | | | | | | | | | | | | | | | | | | | | | |
|-----|-----|-----|-----|-----|-----|-----|-----|-----|-----|-----|-----|-----|-----|-----|-----|-----|-----|-----|-----|-----|-----|-----|
| DN | 125 | 125 | 140 | 140 | 140 | 160 | 160 | 160 | 160 | 180 | 180 | 180 | 200 | 200 | 200 | 225 | 225 | 225 | 250 | 250 | 315 | 315 |
| DN2 | 90 | 110 | 90 | 110 | 125 | 90 | 110 | 125 | 140 | 125 | 140 | 160 | 140 | 160 | 180 | 160 | 180 | 200 | 180 | 200 | 225 | 250 |
| L | 90 | 91 | 96 | 96 | 97 | 106 | 106 | 112 | 105 | 112 | 112 | 100 | 110 | 106 | 136 | 116 | 120 | 120 | 130 | 130 | 150 | 152 |
| L1 | 80 | 90 | 82 | 91 | 94 | 83 | 94 | 88 | 95 | 88 | 88 | 100 | 100 | 100 | 130 | 103 | 118 | 115 | 117 | 145 | 130 | 130 |
| H | 188 | 186 | 205 | 205 | 196 | 224 | 225 | 239 | 220 | 240 | 237 | 216 | 240 | 236 | 278 | 260 | 262 | 257 | 290 | 290 | 320 | 335 |

RACCORDERIA IN POLIETILENE

PE FITTINGS

Art. 038010

CALOTTA, PE 100

END CAP, PE 100

APPLICAZIONE:

Impianti di acquedottistica, di convogliamento gas combustibili, di fognature civili ed industriali, di irrigazione etc...

APPLICATION:

Water pipeline systems, for gas, civil and industrial sewerage, irrigation etc...

NORME PRODOTTO:

UNI EN ISO 15494
UNI EN 1555-3
UNI EN 12201-3

PRODUCT STANDARDS:

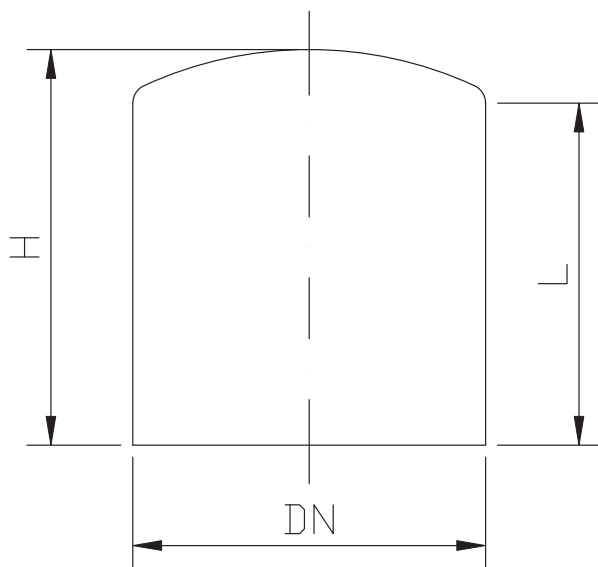
UNI EN ISO 15494
UNI EN 1555-3
UNI EN 12201-3

TEMPERATURA DI ESERCIZIO: da -40 a +60°C

WORKING TEMPERATURE: from -40 to +60°C

PRESSIONE DI ESERCIZIO MAX:Acqua 16 bar
Gas 10 bar

MAX WORKING PRESSURE: Water 16 bar
Gas 10 bar



| | | | | | | | | | | | | | | | | | |
|-----------|-----------|-----------|-----------|-----------|-----------|-----------|-----------|------------|------------|------------|------------|------------|------------|------------|------------|------------|------------|
| DN | 25 | 32 | 40 | 50 | 63 | 75 | 90 | 110 | 125 | 140 | 160 | 180 | 200 | 225 | 250 | 280 | 315 |
| L | 49 | 52 | 61 | 58 | 71 | 79 | 83 | 95 | 88 | 105 | 118 | 120 | 130 | 118 | 117 | 112 | 155 |
| H | 54 | 61 | 67 | 74 | 84 | 88 | 93 | 106 | 97 | 119 | 134 | 125 | 158 | 142 | 150 | 117 | 193 |

Art. 038012

CARTELLA CODOLO LUNGO, PE 100
STUB FLANGE LONG SPIGOT, PE 100

APPLICAZIONE:

Impianti di acquedottistica, di convogliamento gas combustibili, di fognature civili ed industriali, di irrigazione etc...

APPLICATION:

Water pipeline systems, for gas, civil and industrial sewerage, irrigation etc...

NORME PRODOTTO:

UNI EN ISO 15494
UNI EN 1555-3
UNI EN 12201-3

PRODUCT STANDARDS:

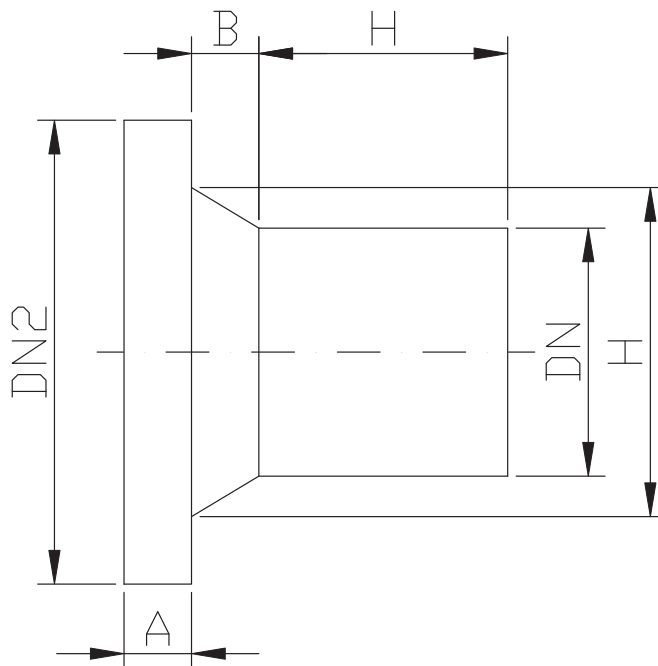
UNI EN ISO 15494
UNI EN 1555-3
UNI EN 12201-3

TEMPERATURA DI ESERCIZIO: da -40 a + 60°C

WORKING TEMPERATURE: from -40 to + 60°C

PRESSIONE DI ESERCIZIO MAX:Acqua 16 bar
Gas 10 bar

MAX WORKING PRESSURE: Water 16 bar
Gas 10 bar



| DN | 25 | 32 | 40 | 50 | 63 | 75 | 90 | 110 | 125 | 140 | 160 | 180 | 200 | 225 | 250 |
|-----|----|----|----|----|-----|-----|-----|-----|-----|-----|-----|-----|-----|-----|-----|
| DN2 | 58 | 67 | 77 | 90 | 101 | 121 | 138 | 158 | 158 | 187 | 211 | 213 | 274 | 270 | 323 |
| L | 46 | 55 | 56 | 53 | 62 | 73 | 83 | 92 | 98 | 103 | 104 | 108 | 117 | 114 | 120 |
| H | 33 | 38 | 49 | 59 | 73 | 90 | 105 | 125 | 131 | 153 | 174 | 184 | 230 | 229 | 282 |
| A | 9 | 10 | 11 | 12 | 14 | 16 | 17 | 18 | 18 | 18 | 18 | 20 | 24 | 24 | 25 |
| B | 13 | 14 | 14 | 20 | 20 | 23 | 24 | 32 | 25 | 32 | 32 | 32 | 40 | 40 | 50 |