

VALVOLA DI RITEGNO A PALLA FLANGIATA
FLANGED BALL CHECK VALVE

PN 10 - Art. C068 T
PN 16 - Art. C067 T

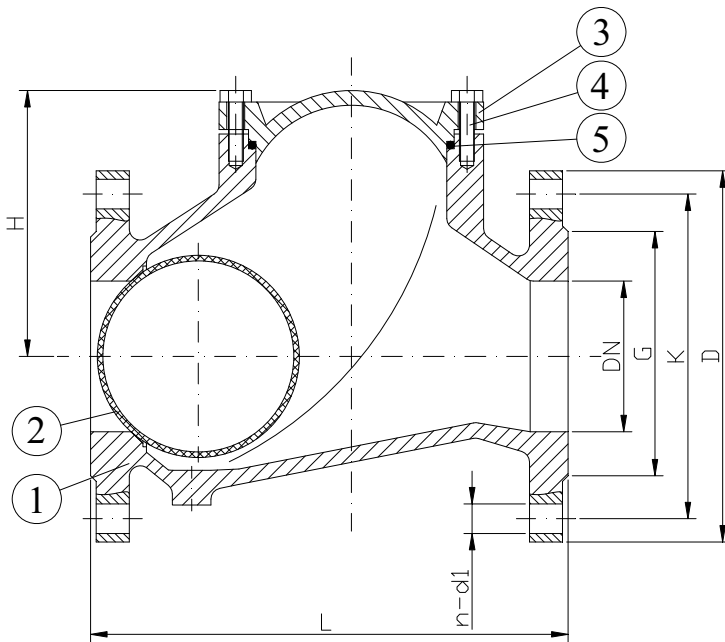
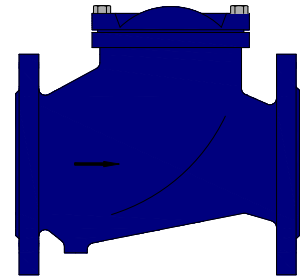
VALVOLA DI RITEGNO A PALLA FLANGIATA PN10 - PN16
FLANGED BALL CHECK VALVE PN10 - PN16

APPLICAZIONE:

Sistemi di pompaggio per acqua, liquidi viscosi, densi ed aggressivi.

APPLICATION:

Pumping station for clean and sewage water or viscous fluids.



SCARTAMENTO: EN 558-1 Serie 48
FLANGE: EN 1092-2
COLLAUDI: EN 12266
TEMPERATURA ESER: Min -10°C /Max + 80°C
PRESSIONE ESERCIZIO MIN: 0,3/0,5 bar

FACE TO FACE: EN 558-1 Serie 48
FLANGES: EN 1092-2
TESTS: EN 12266
WORKING TEMP: Min -10°C /Max + 80°C
MINIMUM WORKING PRESSURE: 0,3/0,5 bar

DENOMINAZIONE PART	MATERIALI MATERIALS
1 CORPO BODY	GJS 400 GJS 400
2 PALLA BALL	ALLUMINIO + NBR Dal DN50 al DN150 ACCIAIO + NBR Dal DN200 al DN300 ALUMINIUM + NBR From DN50 to DN150 STEEL + NBR From DN200 to DN300
3 COPERCHIO BONNET	GJS 400 GJS 400
4 VITE BOLT	ACCIAIO INOX STAINLESS STEEL
5 GUARNIZIONE GASKET	NBR NBR

DN	G	K		D		n-d1		L	H	Peso Weight (kg)
		PN10	PN16	PN10	PN16	PN10	PN16			
50	98	125	125	165	165	4-ø19	4-ø19	200	106	7.7
65	118	145	145	185	185	4-ø19	4-ø19	240	129	11.2
80	132	160	160	200	200	4-ø19	8-ø19	260	146	15.4
100	156	180	180	220	220	8-ø19	8-ø19	300	194	21.7
125	184	210	210	250	250	8-ø19	8-ø19	350	207	33
150	211	240	240	285	285	8-ø23	8-ø23	400	240	45.3
200	260	295	295	340	340	8-ø23	12-ø23	500	322	90
250	319	350	355	395	405	12-ø23	12-ø28	600	388	163
300	370	400	410	445	460	12-ø23	12-ø28	700	458	230

RIVESTIMENTO ESTERNO/INTERNO: Polvere epossidica di colore blu RAL 5005 con spessore min 200µm.
SURFACE PROTECTION: FBE coating process with epoxy resin powder of sky blue color RAL 5005 and minimum thickness of 200µm.

VALVOLA DI RITEGNO A PALLA FILETTATA
THREADED BALL CHECK VALVE

Art. C069 T

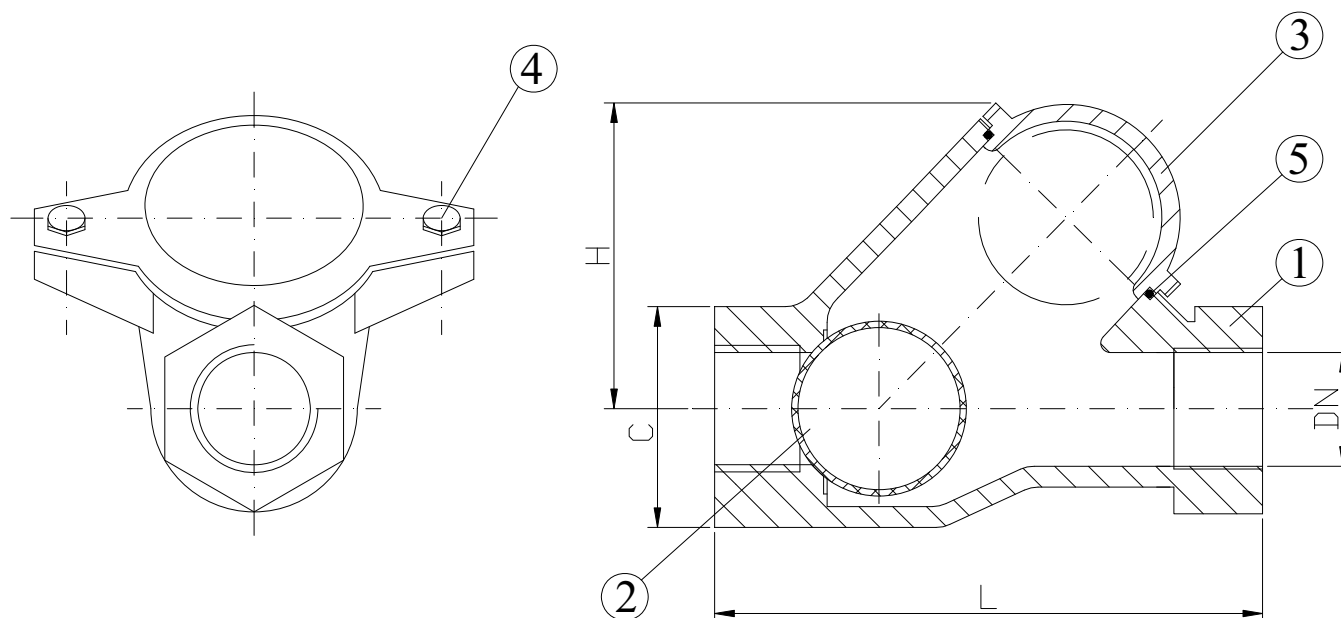
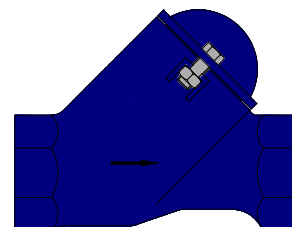
VALVOLA DI RITEGNO A PALLA FILETTATA PN10
THREADED BALL CHECK VALVE PN10

APPLICAZIONE:

Sistemi di pompaggio per acqua, liquidi viscosi, densi ed aggressivi.

APPLICATION:

Pumping station for clean and sewage water or viscous fluids.



ESTREMITA' FILETTATE F/F GAS STANDARD

TEMPERATURA ESERCIZIO: Min -10°C /Max + 80°C

PRESSIONE ESERCIZIO MAX: 16 bar

PRESSIONE ESERCIZIO MIN: 0,3/0,5 bar

THREADED ENDS GAS STANDARD

WORKING TEMPERATURE: Min -10°C /Max + 80°C

MAXIMUM WORKING PRESSURE: 16 bar

MINIMUM WORKING PRESSURE: 0,3/0,5 bar

**DENOMINAZIONE
PART**

**MATERIALI
MATERIALS**

1	CORPO BODY	GJS 400 GJS 400
2	PALLA BALL	ALLUMINIO + NBR ALUMINIUM + NBR
3	COPERCHIO BONNET	GJS 400 GJS 400
4	VITE BOLT	ACCIAIO INOX STAINLESS STEEL
5	GUARNIZIONE GASKET	GOMMA NBR NBR RUBBER

Dim Inch	DN	L	H	C	Peso Weight(Kg)
1	25	125	78	47	1.3
1 1/4	32	132	81	59	1.7
1 1/2	40	145	97	68	2.6
2	50	174	118	82	4.2
2 1/2	65	200	128	104	5.5
3	80	243	160	146	10

RIVESTIMENTO ESTERNO/INTERNO: Polvere epossidica di colore blu RAL 5005 con spessore min 200µm.

SURFACE PROTECTION: FBE coating process with epoxy resin powder of sky blue color RAL 5005 and minimum thickness of 200µm.