

SARACINESCA A GHIGLIOTTINA
KNIFE GATE VALVE

PN 10 - Art. A012 T

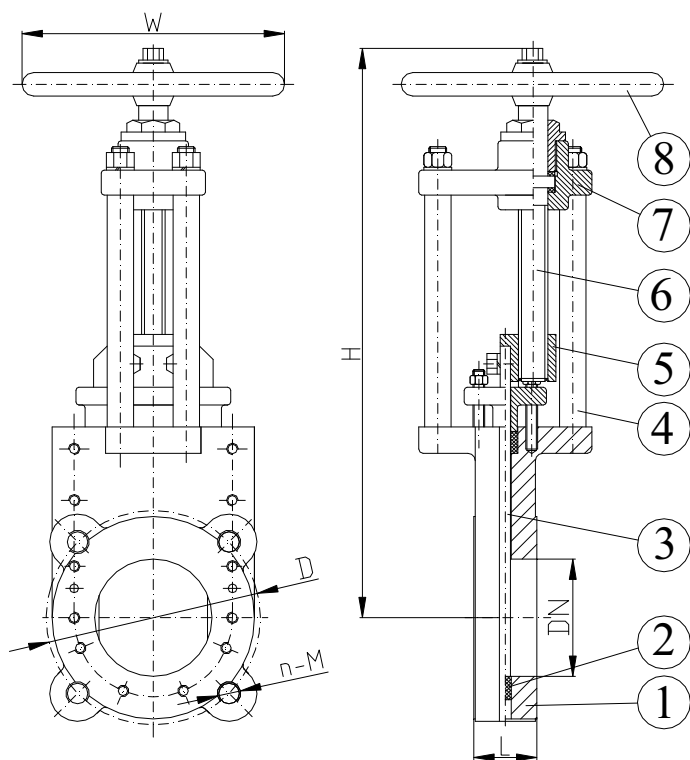
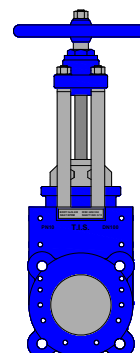
SARACINESCA A GHIGLIOTTINA BIDIREZIONALE ASTA NON SALIENTE PN10
KNIFE GATE VALVE BIDIRECTIONAL TYPE NON-RISING STEM PN10

APPLICAZIONE:

Fornitura e distribuzione acqua, trattamento acque reflue e sistemi fognari, settori industriali.

APPLICATION:

Water supply and distribution, waste water treatment and sewerage.



NORMA PROGETTO: EN 1171
SCARTAMENTO: EN 558-1
FLANGE: EN 1092-2
COLLAUDI: EN 12266
TEMPERATURA ESER: EPDM ≤ 70°C

DESIGN STANDARD: EN 1171
FACE TO FACE: EN 558-1
FLANGES: EN 1092-2
TESTS: EN 12266
WORKING TEMP: EPDM ≤ 70°C

DENOMINAZIONE PART MATERIALI MATERIALS

DENOMINAZIONE PART	MATERIALI MATERIALS
1 CORPO BODY	GJS 400 GJS 400
2 GUARNIZIONE GASKET	GOMMA EPDM EPDM RUBBER
3 PARATIA KNIFE	ACCIAIO INOX AISI 304 STAINLESS STEEL AISI 304
4 SUPPORTO SUPPORT	ACCIAIO STEEL
5 MADREVITE STEM NUT	OTTONE BRASS
6 ASSE STEM	ACCIAIO INOX AISI 420 STAINLESS STEEL AISI 420
7 SUPPORTO DI MANOVRA MANOUVRING SUPPORT	GJS 400 GJS 400
8 VOLANTINO HANDWHEEL	GHISA CAST IRON

DN	D	n-M	L	H	W	Peso Weight (kg)
50	125	4-M16	43	290	180	13
65	145	4-M16	46	295	180	16
80	160	8-M16	46	320	200	21
100	180	8-M16	52	365	250	26
125	210	8-M16	56	405	300	32
150	240	8-M20	56	478	300	44
200	295	8-M20	60	545	350	70
250	350	12-M20	68	692	400	97
300	400	12-M20	78	785	500	140
350	460	16-M20	78	892	500	207
400	515	16-M24	102	998	600	250
450	565	20-M24	114	1422	600	300
500	620	20-M24	127	1565	600	340

RIVESTIMENTO ESTERNO/INTERNO: Polvere epossidica di colore BLU RAL 5005 con spessore min 200µm.

SURFACE PROTECTION: FBE coating process with epoxy resin powder of sky blue color RAL 5005 and minimum thickness of 200µm.

SARACINESCA A GHIGLIOTTINA
KNIFE GATE VALVE

PN 10 - Art. A013 T

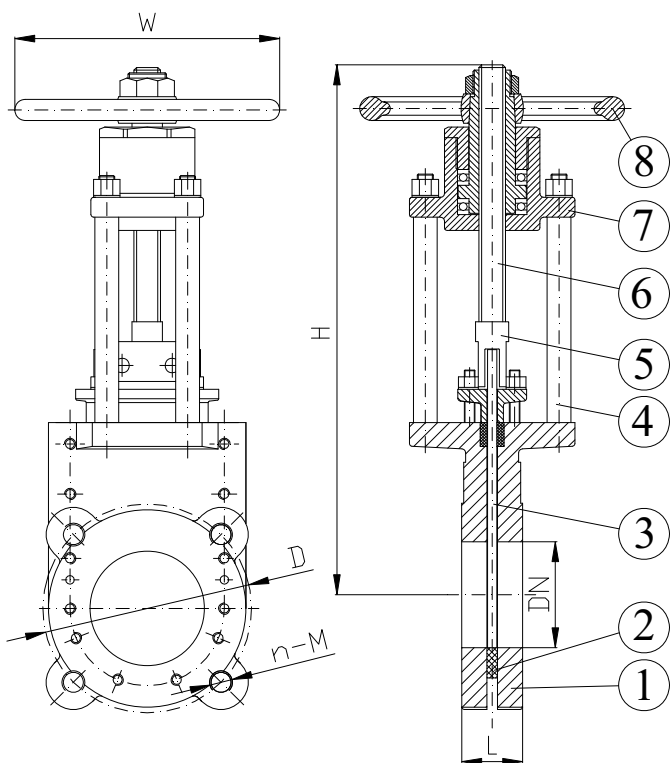
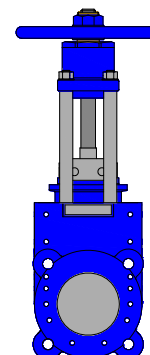
SARACINESCA A GHIGLIOTTINA BIDIREZIONALE ASTA SALIENTE PN10
KNIFE GATE VALVE BIDIRECTIONAL TYPE RISING STEM PN10

APPLICAZIONE:

Fornitura e distribuzione acqua, trattamento acque reflue e sistemi fognari, settori industriali.

APPLICATION:

Water supply and distribution, waste water treatment and sewerage.



NORMA PROGETTO: EN 1171
SCARTAMENTO: EN 558-1
FLANGE: EN 1092-2
COLLAUDI: EN 12266
TEMPERATURA ESER: EPDM ≤ 70°C

DESIGN STANDARD: EN 1171
FACE TO FACE: EN 558-1
FLANGES: EN 1092-2
TESTS: EN 12266
WORKING TEMP: EPDM ≤ 70°C

DENOMINAZIONE PART	MATERIALI MATERIALS
1 CORPO BODY	GJS 400 GJS 400
2 GUARNIZIONE GASKET	GOMMA EPDM EPDM RUBBER
3 PARATIA KNIFE	ACCIAIO INOX AISI 304 STAINLESS STEEL AISI 304
4 SUPPORTO SUPPORT	ACCIAIO STEEL
5 SUPP. PIASTRA SUPPORT PLATE	ACCIAIO INOX AISI 304 STAINLESS STEEL AISI 304
6 ASSE STEM	ACCIAIO INOX AISI 420 STAINLESS STEEL AISI 420
7 SUPPORTO DI MANOVRA MANOUVRING SUPPORT	GJS 400 GJS 400
8 VOLANTINO HANDWHEEL	GHISA CAST IRON

DN	D	n-M	L	H	W	Peso Weight (kg)
50	125	4-M16	43	337	180	13
65	145	4-M16	46	357	180	16
80	160	8-M16	46	400	200	21
100	180	8-M16	52	466	250	26
125	210	8-M16	56	531	300	32
150	240	8-M20	56	633	300	44
200	295	8-M20	60	744	350	70
250	350	12-M20	68	940	400	97
300	400	12-M20	78	1087	500	140
350	460	16-M20	78	1238	500	207
400	515	16-M24	102	1394	600	250
450	565	20-M24	114	1550	600	300
500	620	20-M24	127	1700	600	340

RIVESTIMENTO ESTERNO/INTERNO: Polvere epossidica di colore BLU RAL 5005 con spessore min 200µm.

SURFACE PROTECTION: FBE coating process with epoxy resin powder of sky blue color RAL 5005 and minimum thickness of 200µm.